

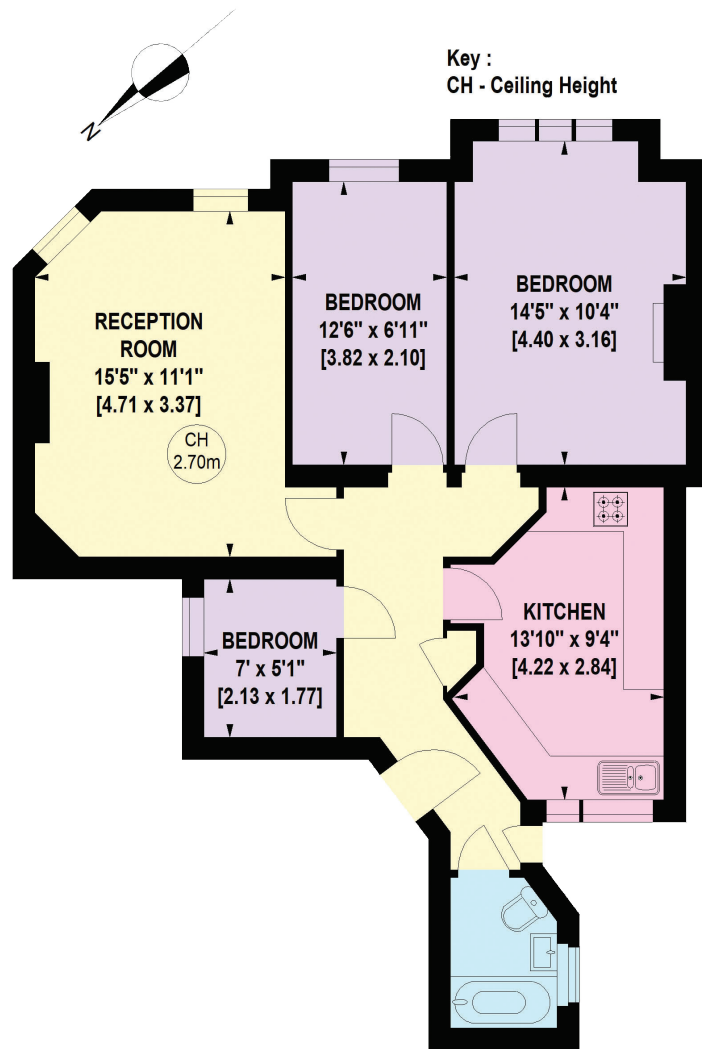
Park Mansions

Fulham, SW6



**STRUTT
& PARKER**

BNP PARIBAS GROUP



GROUND FLOOR



A fantastic ground floor flat with three bedrooms and offering fantastic living space.

The property is located on the ground floor of this imposing red brick mansion block.

Currently laid out with two double bedrooms to the front of the property and a smaller bedroom/study that would work perfectly as a work from home space or as a nursery. A generous reception/dining room, to the rear of the property there is a separate kitchen and family bathroom.

Located on Colehill Lane in the "Munster village" the flat is brilliantly located for the multitude of shops and restaurants on both Munster Road and Fulham Road. Bishops Park which offers fantastic open green space and the Fulham Pier redevelopment also offers eating and drinking opportunities on the river. Parsons Green Station (District Line) is 0.5 miles away and Putney Bridge Station (District Line) is only marginally further.

Floorplans

Gross internal area 713 sq ft (66.24 sq m)
For identification purposes only.

General

Tenure: Leasehold of 104 years and 1 month
Local Authority: The London borough of Hammersmith and Fulham
Service Charge: £1,687.56 per annum
Ground Rent: £10 per annum
Council Tax: Band D
EPC Rating: D
Parking: Residents Parking permit
Broadband: Installed
Asking Price: £565,000

Fulham

701 Fulham Road, London SW6 5UL

020 7731 7100

fulham@struttandparker.com
struttandparker.com

IMPORTANT NOTICE: Strutt & Parker gives notice that: 1. These particulars do not constitute an offer or contract or part thereof. 2. All descriptions, photographs and plans are for guidance only and should not be relied upon as statements or representations of fact. All measurements are approximate and not necessarily to scale. Any prospective purchaser must satisfy themselves of the correctness of the information within the particulars by inspection or otherwise. 3. Strutt & Parker does not have any authority to give any representations or warranties whatsoever in relation to this property (including but not limited to planning/building regulations), nor can it enter into any contract on behalf of the Vendor. 4. Strutt & Parker does not accept responsibility for any expenses incurred by prospective purchasers in inspecting properties which have been sold, let or withdrawn. 5. We are able to refer you to SPF Private Clients Limited ("SPF") for mortgage broking services, and to Alexander James Interiors ("AJI"), an interior design service. Should you decide to use the services of SPF, we will receive a referral fee from them of 25% of the aggregate of the fee paid to them by you for the arrangement of a mortgage and any fee received by them from the product provider. Should you decide to use the services of AJI, we will receive a referral fee of 10% of the net income received by AJI for the services they provide to you. 6. If there is anything of particular importance to you, please contact this office and Strutt & Parker will try to have the information checked for you. Photographs taken June 2025. Particulars prepared June 2025. Strutt & Parker is a trading style of BNP Paribas Real Estate Advisory & Property Management UK Limited



@struttandparker

Over 50 offices across England and Scotland,
including Prime Central London

For the finer things in property.

