

Collingham Gardens, Earl's Court, SW5

Collingham Gardens, Earl's Court, SW5

Stunning three-bedroom maisonette, benefiting from high ceilings and access to communal gardens.

Reception Room | Kitchen | Three Bedrooms | Two Bathrooms | W/C | EPC Rating E

A hugely bright and beautiful three-bedroom maisonette arranged over two floors, high ceilings throughout with access to communal gardens, found at the most desirable part of Collingham Gardens.

Collingham Gardens is a delightful tree-lined street with access to beautiful communal gardens that is well served by the great range of shops and services available on Gloucester Road and deeper into South Kensington.

Terms

Tenure: Share of Freehold

Local Authority: Royal Borough of Kensington and Chelsea

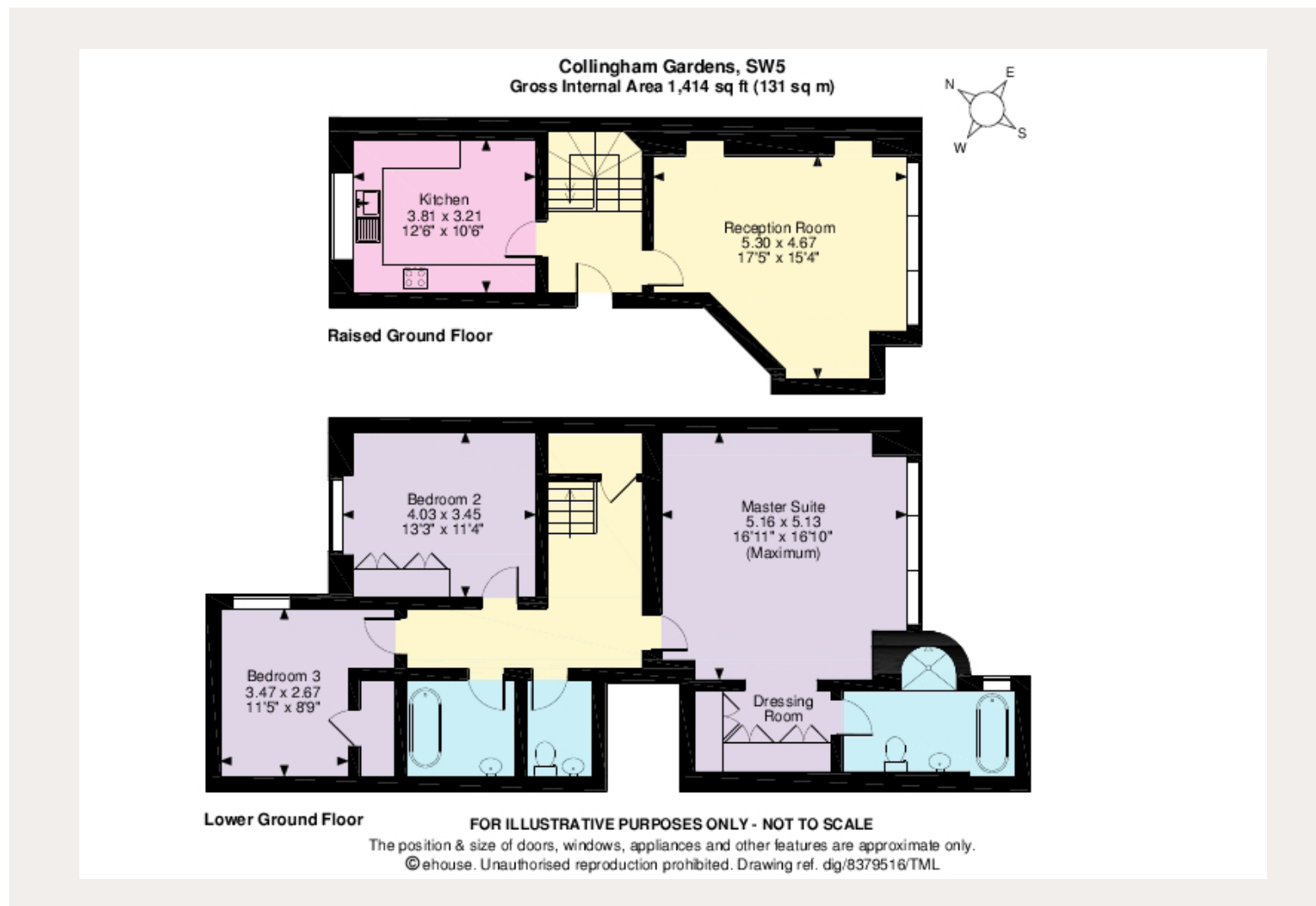
Price: £1,850,000

South Kensington

90 Old Brompton Road SW7 3LQ

0207 581 7000

southken@struttandparker.com



IMPORTANT NOTICE

Strutt & Parker gives notice that: 1. These particulars do not constitute an offer or contract or part thereof. 2. All descriptions, photographs and plans are for guidance only and should not be relied upon as statements or representations of fact. All measurements are approximate and not necessarily to scale. Any prospective purchaser must satisfy themselves of the correctness of the information within the particulars by inspection or otherwise. 3. Strutt & Parker does not have any authority to give any representations or warranties whatsoever in relation to this property (including but not limited to planning/building regulations), nor can it enter into any contract on behalf of the Vendor. 4. Strutt & Parker does not accept responsibility for any expenses incurred by prospective purchasers in inspecting properties which have been sold, let or withdrawn. 5. If there is anything of particular importance to you, please contact this office and Strutt & Parker will try to have the information checked for you. Photographs taken March 2019. Particulars prepared March 2019. Strutt & Parker is a trading style of BNP Paribas Real Estate Advisory & Property Management UK Limited.