



Colville Gardens, Notting Hill, W11

For the finer things in property.

**STRUTT  
& PARKER**

BNP PARIBAS GROUP

# Colville Gardens, Notting Hill, W11

An impressive two-bedroom, raised ground floor flat in the heart of Notting Hill.

This well-presented flat has excellent entertaining space with impressive ceiling heights (3.23m) and great natural light from the large bay window. The two bedrooms are at the rear of the property, both have built in wardrobes and there is additional loft storage space.

Colville Gardens is located in close proximity to the highly fashionable addresses of Westbourne Grove and Portobello Road, and benefits from all the shopping and transport facilities of the local area.

Kitchen | Reception room | Two bedrooms  
Bathroom | Storage area | EPC rating D

## Terms

**Tenure:** Leasehold, 189 years from 24 June 1974

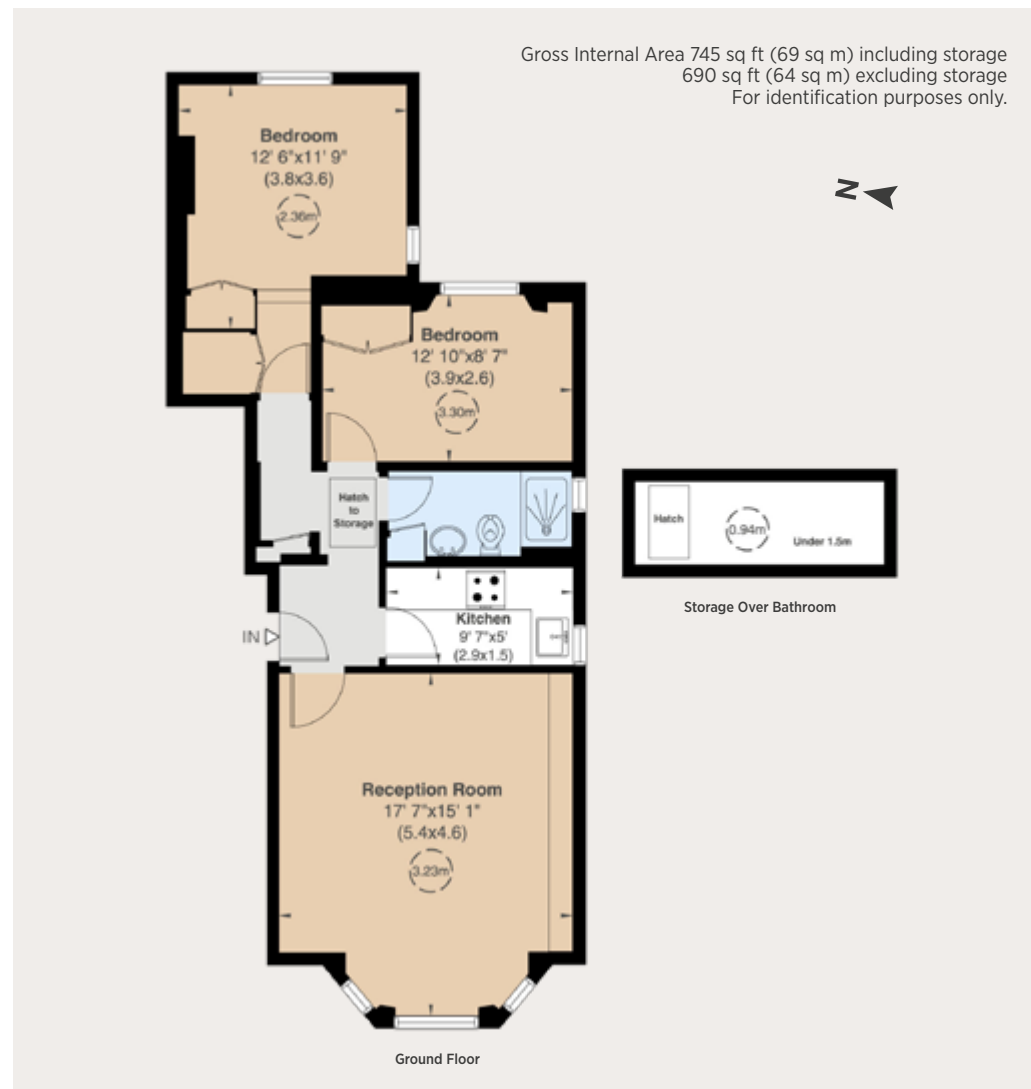
**Service Charge:** Approximately £5,090 for the period 25/12/2021 to 24/12/2022

**Ground Rent:** £100 pa

**Council Tax:** Band F

**Local Authority:** The Royal Borough of Kensington and Chelsea

**Asking Price:** £1,250,000



303 Westbourne Grove, London, W11 2QA

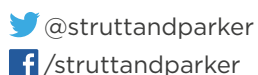
020 7221 1111

nottinghill@struttandparker.com

struttandparker.com

## IMPORTANT NOTICE

Strutt & Parker gives notice that: 1. These particulars do not constitute an offer or contract or part thereof. 2. All descriptions, photographs and plans are for guidance only and should not be relied upon as statements or representations of fact. All measurements are approximate and not necessarily to scale. Any prospective purchaser must satisfy themselves of the correctness of the information within the particulars by inspection or otherwise. 3. Strutt & Parker does not have any authority to give any representations or warranties whatsoever in relation to this property (including but not limited to planning/building regulations), nor can it enter into any contract on behalf of the Vendor. 4. Strutt & Parker does not accept responsibility for any expenses incurred by prospective purchasers in inspecting properties which have been sold, let or withdrawn. 5. We are able to refer you to SPF Private Clients Limited ("SPF") for mortgage broking services, and to Alexander James Interiors ("AJI"), an interior design service. Should you decide to use the services of SPF, we will receive a referral fee from them of 25% of the aggregate of the fee paid to them by you for the arrangement of a mortgage and any fee received by them from the product provider. Should you decide to use the services of AJI, we will receive a referral fee of 10% of the net income received by AJI for the services they provide to you. 6. If there is anything of particular importance to you, please contact this office and Strutt & Parker will try to have the information checked for you. Photographs taken February 2023. Particulars prepared February 2023. Strutt & Parker is a trading style of BNP Paribas Real Estate Advisory & Property Management UK Limited.



Over 45 offices across England and Scotland,  
including Prime Central London

For the finer things in property.

