


Colville Terrace

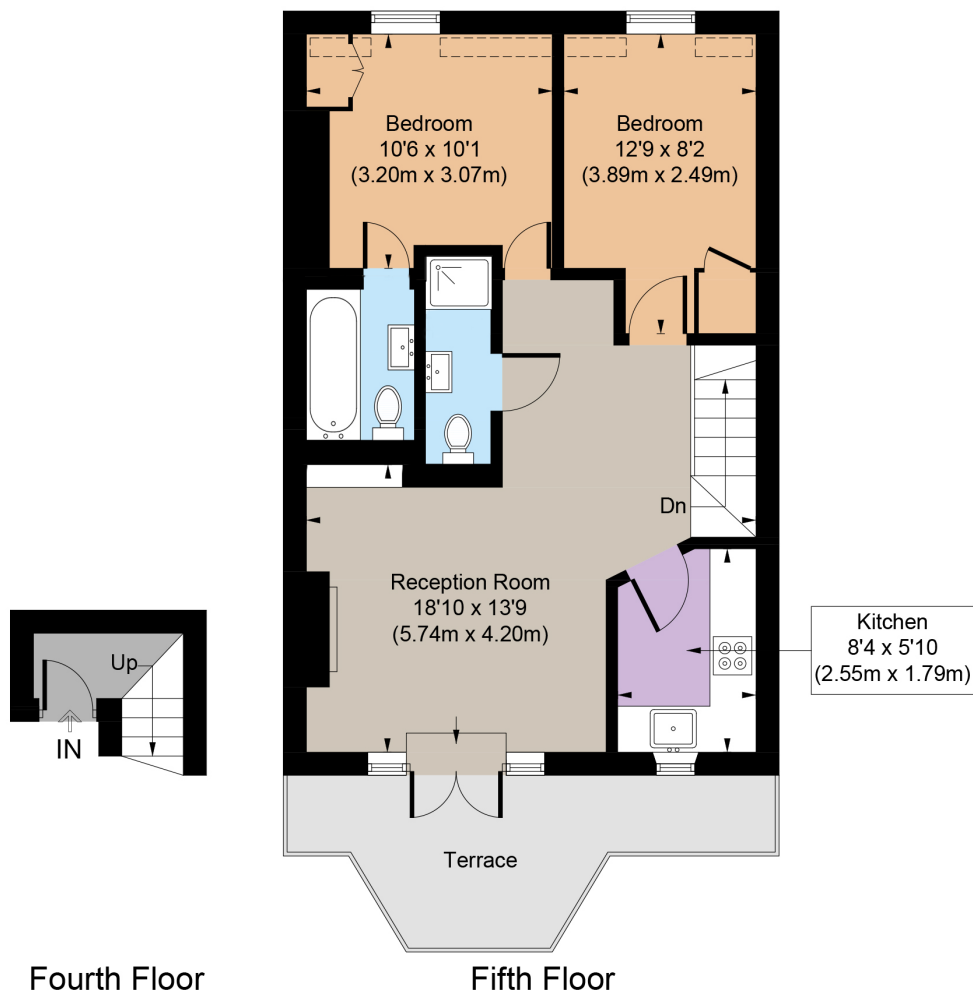
Notting Hill, W11



**STRUTT
& PARKER**

BNP PARIBAS GROUP

 = Reduced headroom below 1.5m / 5'0



A two-bedroom, two-bathroom top floor apartment with a terrace.

Set within an attractive pastel coloured period building on Colville Terrace, this top floor two-bedroom apartment needs some refurbishment but enjoys fantastic natural light, wooden floors and a separate kitchen. The private terrace provides wonderful views over Notting Hill.

Colville Terrace is in close proximity to the highly fashionable addresses of Westbourne Grove and Portobello Road, and benefits from all the shopping and transport facilities of the local area.

Floorplans

Gross internal area 618 sq ft (57.4 sq m)
For identification purposes only.

General

Tenure: Leasehold – 999 year lease to be granted upon completion

Local Authority: The Royal Borough of Kensington and Chelsea

Service Charge: £1,682.74pa

Ground Rent: £250pa

Council Tax: Band D

EPC Rating: D

Parking: Residential permit

Broadband: Available

Asking Price: £795,000

Notting Hill

303 Westbourne Grove, London, W11 2QA

020 7221 1111

nottinghill@struttandparker.com
struttandparker.com

IMPORTANT NOTICE: Strutt & Parker gives notice that: 1. These particulars do not constitute an offer or contract or part thereof. 2. All descriptions, photographs and plans are for guidance only and should not be relied upon as statements or representations of fact. All measurements are approximate and not necessarily to scale. Any prospective purchaser must satisfy themselves of the correctness of the information within the particulars by inspection or otherwise. 3. Strutt & Parker does not have any authority to give any representations or warranties whatsoever in relation to this property (including but not limited to planning/building regulations), nor can it enter into any contract on behalf of the Vendor. 4. Strutt & Parker does not accept responsibility for any expenses incurred by prospective purchasers in inspecting properties which have been sold, let or withdrawn. 5. We are able to refer you to SPF Private Clients Limited ("SPF") for mortgage broking services, and to Alexander James Interiors ("AJI"), an interior design service. Should you decide to use the services of SPF, we will receive a referral fee from them of 25% of the aggregate of the fee paid to them by you for the arrangement of a mortgage and any fee received by them from the product provider. Should you decide to use the services of AJI, we will receive a referral fee of 10% of the net income received by AJI for the services they provide to you. 6. If there is anything of particular importance to you, please contact this office and Strutt & Parker will try to have the information checked for you. Photographs taken March 2025. Particulars prepared March 2025. Strutt & Parker is a trading style of BNP Paribas Real Estate Advisory & Property Management UK Limited



@struttandparker

Over 50 offices across England and Scotland,
including Prime Central London

For the finer things in property.

**STRUTT
& PARKER**
BNP PARIBAS GROUP