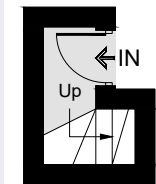


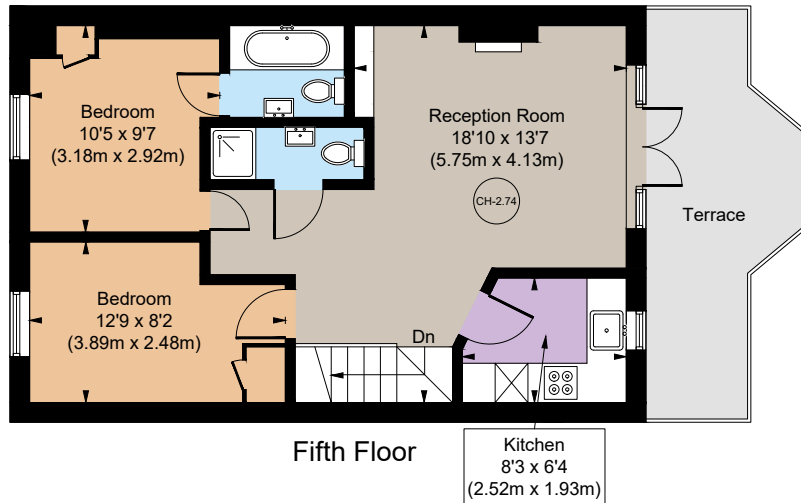
Colville Terrace

Notting Hill, W11





Fourth Floor



Fifth Floor



A two-bedroom, two-bathroom top floor apartment with a terrace.

Nestled on the top floor of a charming period property in the sought-after Colville Terrace, this spacious two-bedroom, two-bathroom apartment seamlessly combines classic character with contemporary potential.

Retaining much of its original charm, the property boasts elegant period features, from high ceilings to large windows that flood the space with natural light. The living area offers a welcoming ambiance, while the large, unmodified balcony provides a peaceful outdoor retreat with enviable views of the surrounding area. With its unaltered design, this apartment presents a rare opportunity to personalise and modernise a quintessential London home, all while enjoying the charm and historical appeal of this prestigious terrace.

Colville Terrace is in close proximity to the highly fashionable addresses of Westbourne Grove and Portobello Road, and benefits from all the shopping and transport facilities of the local area.

Floorplans

Gross internal area 592 sq ft (55.0 sq m)

For identification purposes only.

General

Tenure: Leasehold, extended to 999 years prior to completion

Local Authority: The Royal Borough of Kensington and Chelsea

Service Charge: £1,683 per annum

Ground Rent: £250 pa

Council Tax: Band D

EPC Rating: C

Parking: Residential permit available

Broadband: Available

Asking Price: £795,000

Notting Hill

303 Westbourne Grove, London, W11 2QA

020 7221 1111

nottinghill@struttandparker.com

struttandparker.com

IMPORTANT NOTICE: Strutt & Parker gives notice that: 1. These particulars do not constitute an offer or contract or part thereof. 2. All descriptions, photographs and plans are for guidance only and should not be relied upon as statements or representations of fact. All measurements are approximate and not necessarily to scale. Any prospective purchaser must satisfy themselves of the correctness of the information within the particulars by inspection or otherwise. 3. Strutt & Parker does not have any authority to give any representations or warranties whatsoever in relation to this property (including but not limited to planning/building regulations), nor can it enter into any contract on behalf of the Vendor. 4. Strutt & Parker does not accept responsibility for any expenses incurred by prospective purchasers in inspecting properties which have been sold, let or withdrawn. 5. We are able to refer you to SPF Private Clients Limited ("SPF") for mortgage broking services, and to Alexander James Interiors ("AJI"), an interior design service. Should you decide to use the services of SPF, we will receive a referral fee from them of 25% of the aggregate of the fee paid to them by you for the arrangement of a mortgage and any fee received by them from the product provider. Should you decide to use the services of AJI, we will receive a referral fee of 10% of the net income received by AJI for the services they provide to you. 6. If there is anything of particular importance to you, please contact this office and Strutt & Parker will try to have the information checked for you. Photographs taken July 2025. Particulars prepared July 2025. Strutt & Parker is a trading style of BNP Paribas Real Estate Advisory & Property Management UK Limited



@struttandparker

Over 50 offices across England and Scotland,
including Prime Central London

For the finer things in property.

