

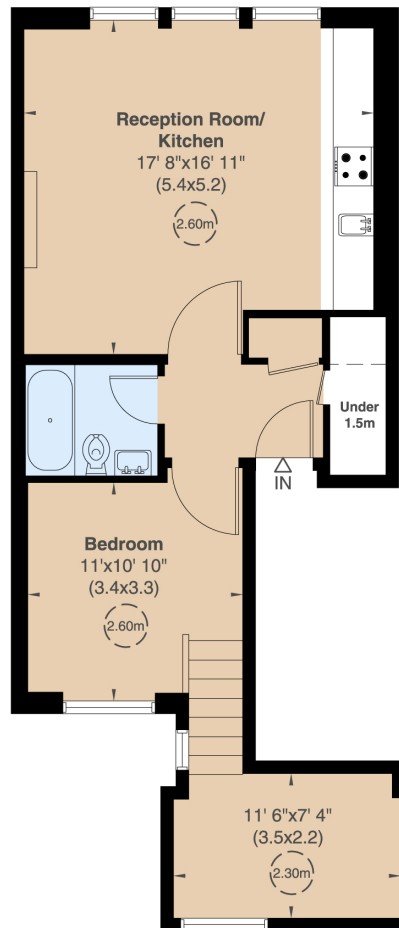
Colville Terrace

Notting Hill, W11



**STRUTT
& PARKER**

BNP PARIBAS GROUP



Second Floor



Charming period one-bedroom flat with spacious study and incredible potential to add value.

Nestled in a sought-after location, this charming period 1-bedroom flat offers a perfect blend of character and potential.

Boasting beautiful reception windows, this flat features a generously sized open-plan living and dining area, ideal for both relaxation and entertaining. A large, versatile study provides additional space, perfect for a home office or creative retreat. With its timeless appeal and the opportunity to enhance further, this property offers fantastic potential to add value and truly make it your own.

Floorplans

Gross internal area 619 sq ft (58 sq m) including under 1.5m
602 sq ft (56 sq m) excluding under 1.5m
 For identification purposes only.

General

Tenure: Leasehold of 99 years expiring 24/6/2124
Local Authority: Royal Borough of Kensington and Chelsea
Service Charge: £250 pcm
Ground Rent: £200 per year
Council Tax: Band C
EPC Rating: C
Parking: Residential permit
Broadband: Available
Asking Price: £850,000

Notting Hill

303 Westbourne Grove, London, W11 2QA

020 7221 1111

nottinghill@struttandparker.com
 struttandparker.com

IMPORTANT NOTICE: Strutt & Parker gives notice that: 1. These particulars do not constitute an offer or contract or part thereof. 2. All descriptions, photographs and plans are for guidance only and should not be relied upon as statements or representations of fact. All measurements are approximate and not necessarily to scale. Any prospective purchaser must satisfy themselves of the correctness of the information within the particulars by inspection or otherwise. 3. Strutt & Parker does not have any authority to give any representations or warranties whatsoever in relation to this property (including but not limited to planning/building regulations), nor can it enter into any contract on behalf of the Vendor. 4. Strutt & Parker does not accept responsibility for any expenses incurred by prospective purchasers in inspecting properties which have been sold, let or withdrawn. 5. We are able to refer you to SPF Private Clients Limited ("SPF") for mortgage broking services, and to Alexander James Interiors ("AJI"), an interior design service. Should you decide to use the services of SPF, we will receive a referral fee from them of 25% of the aggregate of the fee paid to them by you for the arrangement of a mortgage and any fee received by them from the product provider. Should you decide to use the services of AJI, we will receive a referral fee of 10% of the net income received by AJI for the services they provide to you. 6. If there is anything of particular importance to you, please contact this office and Strutt & Parker will try to have the information checked for you. Photographs taken April 2025. Particulars prepared April 2025. Strutt & Parker is a trading style of BNP Paribas Real Estate Advisory & Property Management UK Limited



@struttandparker

Over 50 offices across England and Scotland,
 including Prime Central London

For the finer things in property.

