

# Cornwall Crescent

Notting Hill, W11



**STRUTT  
& PARKER**

BNP PARIBAS GROUP



This is a rare opportunity to acquire a freehold building over 2,560 sq ft with a large south-east facing private garden.

A stylishly presented freehold house laid out over five floors, comprising four one bedroom flats and a shell and core lower ground floor providing a development opportunity.



**4 RECEPTION ROOMS**



**4 BEDROOMS**



**4 BATHROOMS**



**FREEHOLD**



**2,582 SQ FT**



**GUIDE PRICE  
£3,000,000**



### The property

The property is currently arranged as five self-contained units. The upper four floors are four recently refurbished one-bedroom flats presented in immaculate condition. The lower ground floor is currently in shell and core condition in need of a full renovation.

### Location

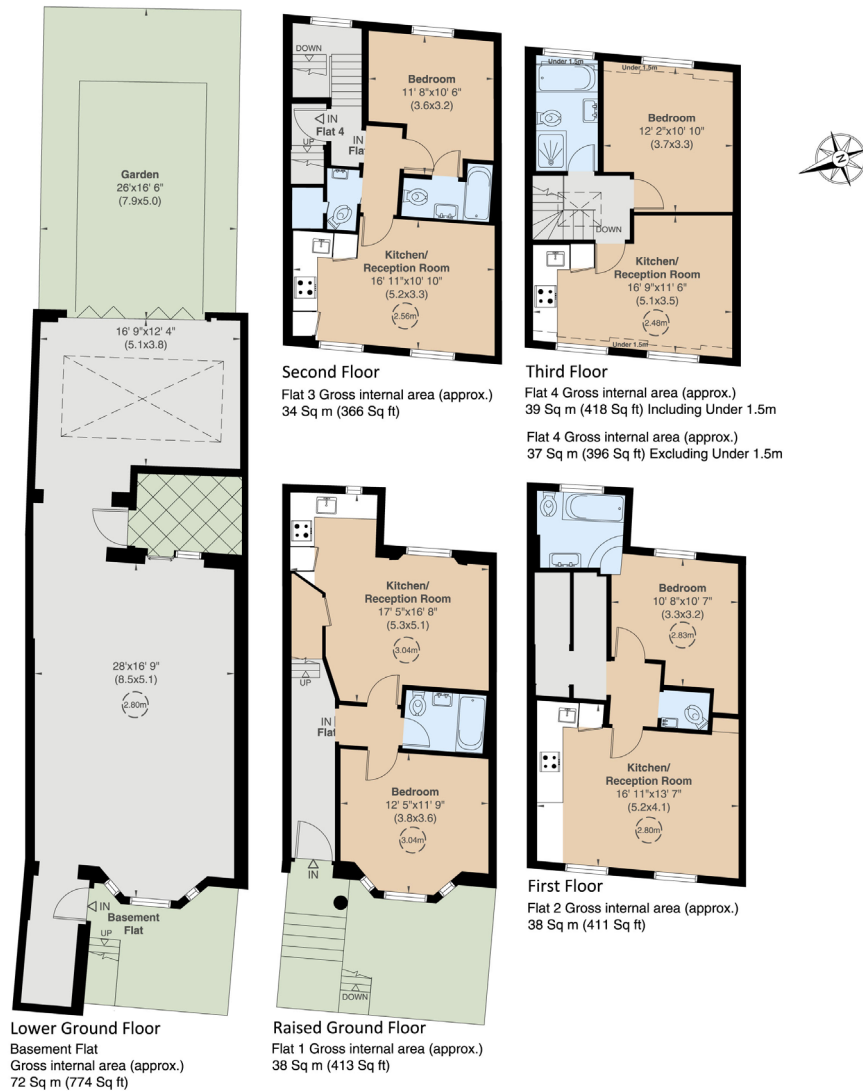
Cornwall Crescent is a pretty, tree-lined address in the Ladbroke Conservation Area, located just off Ladbroke Grove, close to Portobello Road, Westbourne Grove and Notting Hill Gate. Local shops, excellent transport links and underground stations are located nearby.











## Floorplans

**Gross internal area 2,582 sq ft (240 sq m) including under 1.5m**  
**2,560 sq ft (238 sq m) excluding under 1.5m**  
 For identification purposes only.

## General

**Tenure:** Freehold

**Local Authority:** Royal Borough of Kensington and Chelsea

**Council Tax:** Band D

**EPC Rating:** D

**Parking:** RBKC

**Broadband:** Available

## Notting Hill

303 Westbourne Grove, London, W11 2QA

**020 7221 1111**

nottinghill@struttandparker.com

struttandparker.com

**IMPORTANT NOTICE:** Strutt & Parker gives notice that: 1. These particulars do not constitute an offer or contract or part thereof. 2. All descriptions, photographs and plans are for guidance only and should not be relied upon as statements or representations of fact. All measurements are approximate and not necessarily to scale. Any prospective purchaser must satisfy themselves of the correctness of the information within the particulars by inspection or otherwise. 3. Strutt & Parker does not have any authority to give any representations or warranties whatsoever in relation to this property (including but not limited to planning/building regulations), nor can it enter into any contract on behalf of the Vendor. 4. Strutt & Parker does not accept responsibility for any expenses incurred by prospective purchasers in inspecting properties which have been sold, let or withdrawn. 5. We are able to refer you to SPF Private Clients Limited ("SPF") for mortgage broking services, and to Alexander James Interiors ("AJI"), an interior design service. Should you decide to use the services of SPF, we will receive a referral fee from them of 25% of the aggregate of the fee paid to them by you for the arrangement of a mortgage and any fee received by them from the product provider. Should you decide to use the services of AJI, we will receive a referral fee of 10% of the net income received by AJI for the services they provide to you. 6. If there is anything of particular importance to you, please contact this office and Strutt & Parker will try to have the information checked for you. Photographs taken November 2024. Particulars prepared November 2024. Strutt & Parker is a trading style of BNP Paribas Real Estate Advisory & Property Management UK Limited



@struttandparker

Over 50 offices across England and Scotland,  
including Prime Central London

For the finer things in property.

