

Cornwall Gardens

South Kensington, SW7



**STRUTT
& PARKER**

BNP PARIBAS GROUP

A huge, bright, south-facing, three-double-bedroom flat with high ceilings on Cornwall Gardens

Offering unusually high ceilings and set back from the road, this exceptionally bright south-facing three-double-bedroom flat enjoys vast lateral volumes and flexible accommodation, with the added benefit of its own private street entrance.



2 RECEPTION ROOMS



3 BEDROOMS



3 BATHROOMS



LEASEHOLD



1,400 SQ FT



**GUIDE PRICE
£850,000**

The property

A gorgeous three-bedroom, three-bathroom apartment situated in this handsome white stucco fronted building. Boasting three spacious double bedrooms, a sizeable reception room, and separate kitchen spread across two buildings.

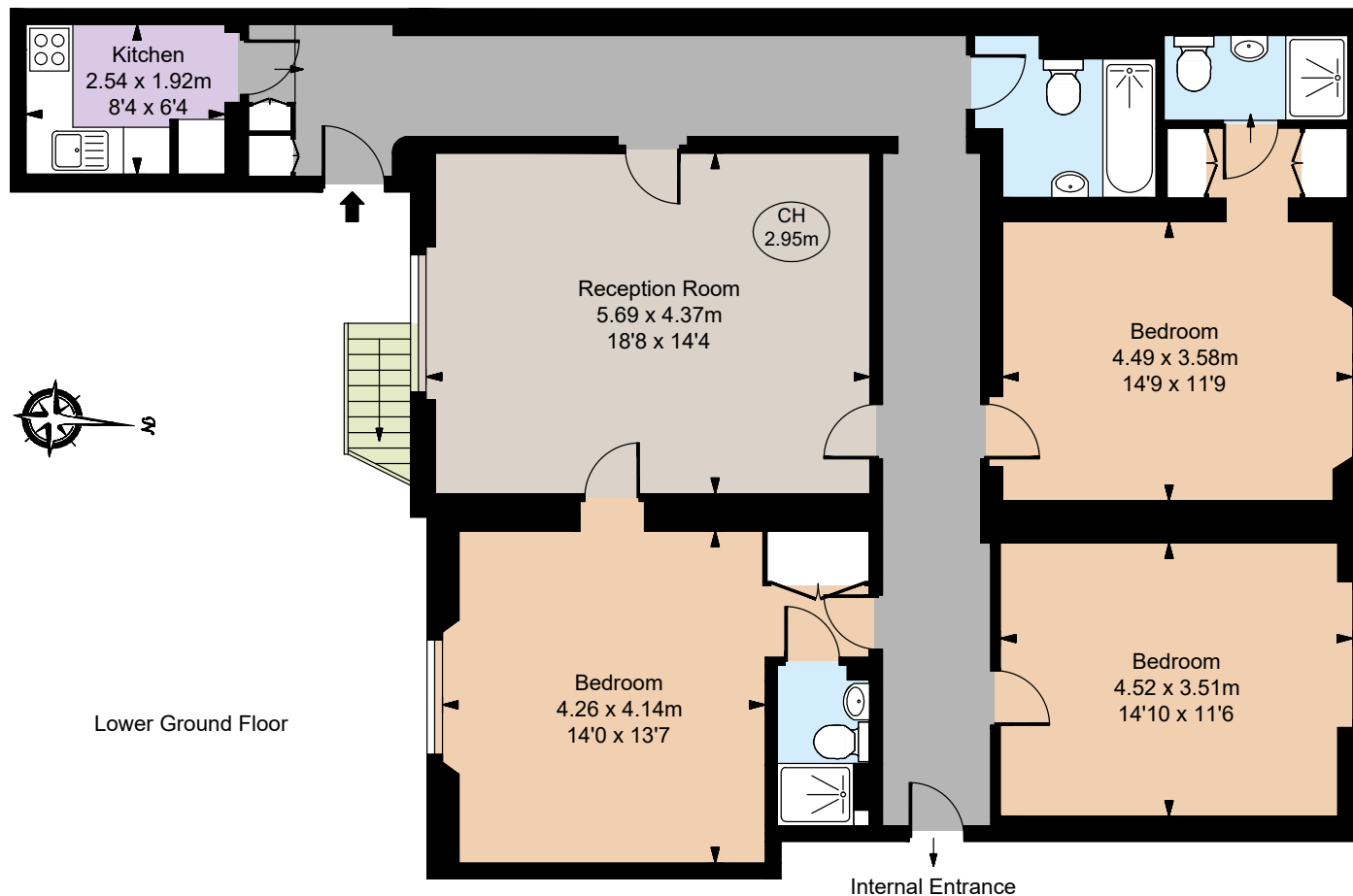
This property lends itself to many different layouts to suit the incoming buyer.

Location

Cornwall Gardens is a prime private garden square located just off Gloucester Road. It is close to the local amenities of the Gloucester Road, Kensington High Street as well as the open spaces of Hyde Park. The flat is ideally situated for the transport links of Gloucester Road underground station, Hyde Park, Kensington High Street, South Kensington, and Knightsbridge.







Floorplans

Gross internal area 1,400 sq ft (130.10 sq m)
For identification purposes only.

General

Tenure: Leasehold, approximately 949 years

Local Authority: The Royal Borough of Kensington and Chelsea

Service Charge: £5,911 per annum

Ground Rent: £50 per annum

Council Tax: Band G

EPC Rating: C

Parking: Parking permit

Mobile coverage and broadband: Information can be found here: <https://checker.ofcom.org.uk/en-gb/mobile-coverage>

IMPORTANT NOTICE: Strutt & Parker gives notice that: 1. These particulars do not constitute an offer or contract or part thereof. 2. All descriptions, photographs and plans are for guidance only and should not be relied upon as statements or representations of fact. All measurements are approximate and not necessarily to scale. Any prospective purchaser must satisfy themselves of the correctness of the information within the particulars by inspection or otherwise. 3. Strutt & Parker does not have any authority to give any representations or warranties whatsoever in relation to this property (including but not limited to planning/building regulations), nor can it enter into any contract on behalf of the Vendor. 4. Strutt & Parker does not accept responsibility for any expenses incurred by prospective purchasers in inspecting properties which have been sold, let or withdrawn. 5. We are able to refer you to SPF Private Clients Limited ("SPF") for mortgage broking services, and to Alexander James Interiors ("AJI"), an interior design service. Should you decide to use the services of SPF, we will receive a referral fee from them of 25% of the aggregate of the fee paid to them by you for the arrangement of a mortgage and any fee received by them from the product provider. Should you decide to use the services of AJI, we will receive a referral fee of 10% of the net income received by AJI for the services they provide to you. 6. If there is anything of particular importance to you, please contact this office and Strutt & Parker will try to have the information checked for you. Photographs taken January 2026. Particulars prepared January 2026. Strutt & Parker is a trading style of BNP Paribas Real Estate Advisory & Property Management UK Limited

South Kensington

90 Old Brompton Road, London, SW7 3LQ

020 7581 7000

southken@struttandparker.com
struttandparker.com



@struttandparker

Over 50 offices across England and Scotland,
including Prime Central London

For the finer things in property.

**STRUTT
& PARKER**

BNP PARIBAS GROUP