

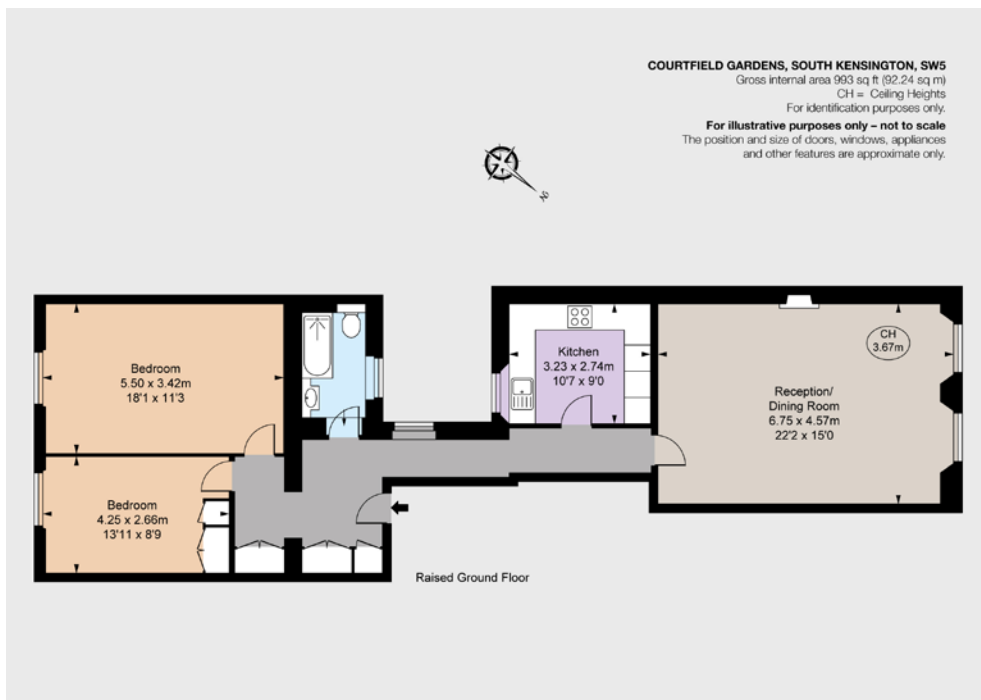


Courtfield Gardens, SW5

£1,250pw*



BNP PARIBAS GROUP



A fantastic raised ground floor, two bedroom apartment with a large north facing reception room.

A lovely apartment with a beautiful north facing reception room and an abundance of light. The flat has two double bedrooms at the rear of the building, a bathroom and separate kitchen, with wood flooring in reception areas and period features throughout.

Additionally, access to the communal gardens located opposite the property, which are well maintained throughout the year, is available.

The flat is ideally located on Courtfield Gardens, moments from Gloucester Road and Earls Court Underground stations (Circle, District & Piccadilly lines) and the amenities of the Old Brompton Road.

Floorplans

House internal area 993 sq ft (92.24 sq m)

For identification purposes only.

General

Local Authority: RBKC

Broadband/Mobile cover: Available

Parking: Parking Permit - The Royal Borough of Kensington and Chelsea

Council Tax Band: G

EPC Rating: D

*The following Tenant charges may apply prior to tenancy commencement: Tenancy Agreement £354 (incl VAT), Credit Reference per application £70 (incl VAT). All advertised prices are exclusive of utility and other associated services.

www.struttandparker.com/tenantcharges

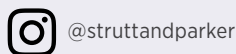
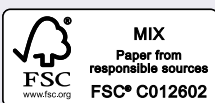
South Kensington Lettings

90 Old Brompton Road, South Kensington, London

020 7581 7000

southken@struttandparker.com
struttandparker.com

IMPORTANT NOTICE: Strutt & Parker gives notice that: 1. These particulars do not constitute an offer or contract or part thereof. 2. All descriptions, photographs and plans are for guidance only and should not be relied upon as statements or representations of fact. All measurements are approximate and not necessarily to scale. Any prospective purchaser must satisfy themselves of the correctness of the information within the particulars by inspection or otherwise. 3. Strutt & Parker does not have any authority to give any representations or warranties whatsoever in relation to this property (including but not limited to planning/building regulations), nor can it enter into any contract on behalf of the Vendor. 4. Strutt & Parker does not accept responsibility for any expenses incurred by prospective purchasers in inspecting properties which have been sold, let or withdrawn. 5. We are able to refer you to SPF Private Clients Limited ("SPF") for mortgage broking services, and to Alexander James Interiors ("AJI"), an interior design service. Should you decide to use the services of SPF, we will receive a referral fee from them of 25% of the aggregate of the fee paid to them by you for the arrangement of a mortgage and any fee received by them from the product provider. Should you decide to use the services of AJI, we will receive a referral fee of 10% of the net income received by AJI for the services they provide to you. 6. If there is anything of particular importance to you, please contact this office and Strutt & Parker will try to have the information checked for you. Photographs taken 11/2025. Particulars prepared 11/2025. Strutt & Parker is a trading style of BNP Paribas Real Estate Advisory & Property Management UK Limited



For the finer things in property.

