



Courtfield Gardens, South Kensington, SW5

For the finer things in property.



Courtfield Gardens, South Kensington, SW5

An exceptional and unusually spacious two bedroom flat with a stunning garden and access to communal garden Courtfield Gardens.

Reception | Family kitchen | Principal bedroom
Second bedroom | En suite bathroom | Shower
room | Office | Garden | Patio | Access to
communal gardens | EPC Rating C

An exceptional and unusually spacious two bedroom flat with a stunning garden in Courtfield Gardens. The property has been beautifully appointed by the current owners and offers a fantastic uncompromised living space with many period features including pretty French doors, high ceilings, a fireplace and traditional decor. With its own private entrance on the lower ground floor level, this well-proportioned garden flat comprises 1,411 sq. ft. over one floor, providing well-balanced living and bedroom accommodation. The property provides two large double bedrooms, the principal with a bathroom en suite and a separate office which opens to a patio. Of particular note, is the superb reception room providing particularly high ceilings and excellent proportions, perfect for entertaining. Accessed via French doors off the reception is a spacious private patio garden. The flat benefits from its own front door, access to communal gardens and ample natural light coming through the large windows as well as the skylights throughout the flat.

Terms

Tenure: Leasehold, 117 years 7 months

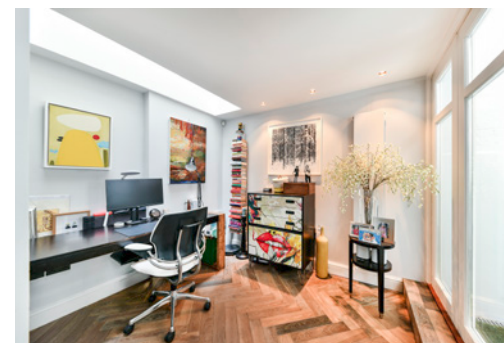
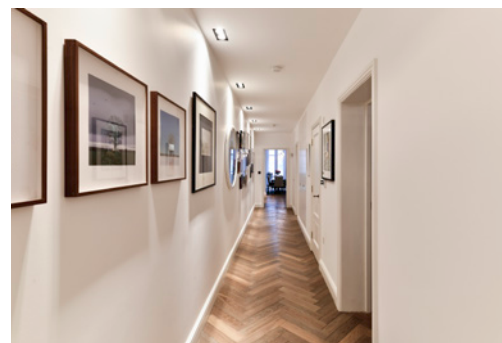
Service Charge: £4,375.50 pa

Ground Rent: £90 pa

Council Tax: Band G

Local Authority: The Royal Borough of Kensington and Chelsea

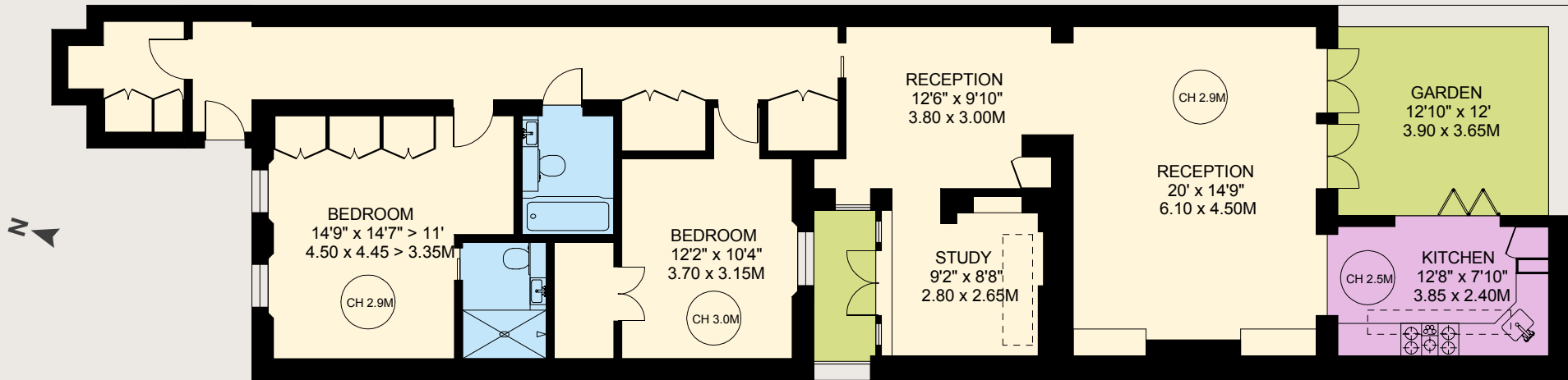
Guide Price: £1,795,000







Gross Internal Area 1,412 sq ft (131.2 sq m)
For identification purposes only.



South Kensington

90 Old Brompton Road, London, SW7 3LQ

020 7581 7000

southken@struttandparker.com

IMPORTANT NOTICE

Strutt & Parker gives notice that: 1. These particulars do not constitute an offer or contract or part thereof. 2. All descriptions, photographs and plans are for guidance only and should not be relied upon as statements or representations of fact. All measurements are approximate and not necessarily to scale. Any prospective purchaser must satisfy themselves of the correctness of the information within the particulars by inspection or otherwise. 3. Strutt & Parker does not have any authority to give any representations or warranties whatsoever in relation to this property (including but not limited to planning/building regulations), nor can it enter into any contract on behalf of the Vendor. 4. Strutt & Parker does not accept responsibility for any expenses incurred by prospective purchasers in inspecting properties which have been sold, let or withdrawn. 5. We are able to refer you to SPF Private Clients Limited ("SPF") for mortgage broking services, and to Alexander James Interiors ("AJI"), an interior design service. Should you decide to use the services of SPF, we will receive a referral fee from them of 25% of the aggregate of the fee paid to them by you for the arrangement of a mortgage and any fee received by them from the product provider. Should you decide to use the services of AJI, we will receive a referral fee of 10% of the net income received by AJI for the services they provide to you. 6. If there is anything of particular importance to you, please contact this office and Strutt & Parker will try to have the information checked for you. Photographs taken May 2024. Particulars prepared May 2024. Strutt & Parker is a trading style of BNP Paribas Real Estate Advisory & Property Management UK Limited.



Over 50 offices across England and Scotland,
including Prime Central London

For the finer things in property.

