

Courtfield House

Courtfield Gardens, SW5



**STRUTT
& PARKER**

BNP PARIBAS GROUP

A stylish maisonette apartment set within a handsome stucco-fronted building in South Kensington.

This modern apartment enjoys views over the beautiful Courtfield communal gardens.



1 RECEPTION ROOM



1 BEDROOM



1 BATHROOM



SHARE OF FREEHOLD



516 SQ FT



**GUIDE PRICE
£895,000**

The property

A contemporary one-bedroom, one-bathroom maisonette located in the sought-after Courtfield House. The modern living room is beautifully decorated, featuring high ceilings and large sash windows that provides natural light and offer picturesque views of the communal gardens.

Upstairs, the fully fitted kitchen is both stylish and functional. The double bedroom is cleverly designed with generous built-in storage and another charming sash window that adds character and light. The property also boasts wooden flooring throughout, enhancing its clean finish.

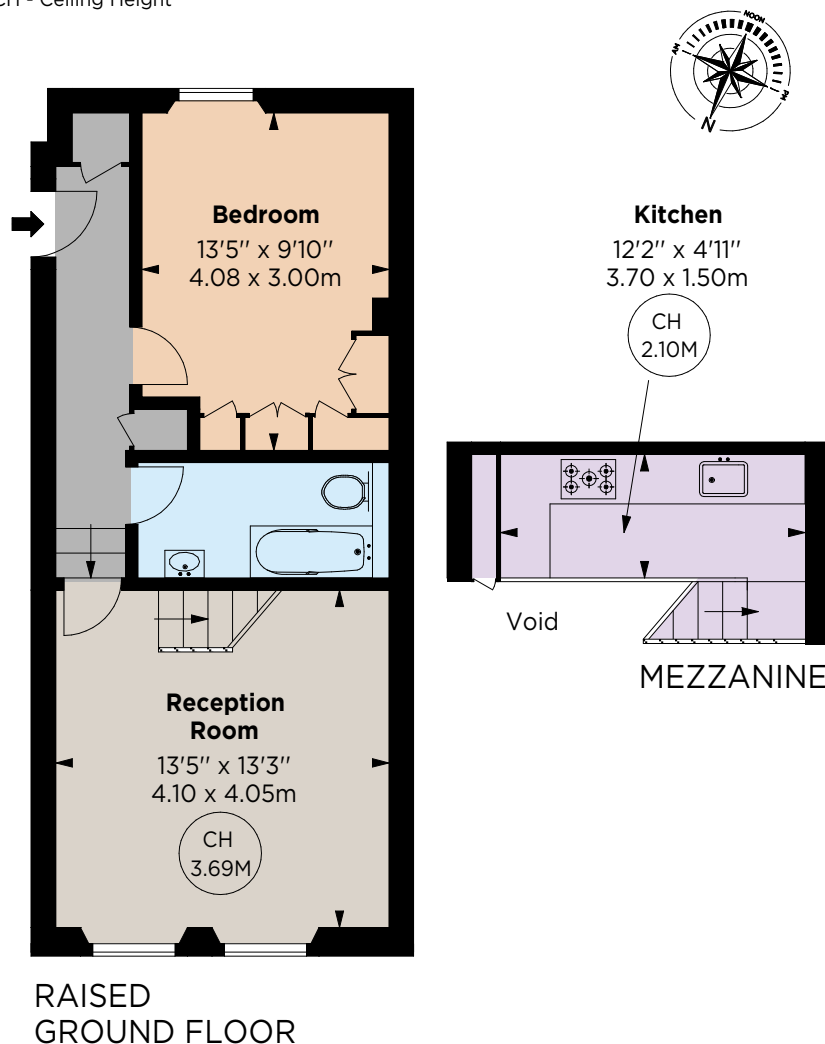
Location

Courtfield Gardens is moments away from the extensive transport and entertainment facilities of Gloucester Road, and from Kensington Gardens. The surrounding area offers a vibrant selection of cafés, restaurants, and boutiques, with the world-class museums and cultural attractions of South Kensington all within striking distance.





Key :
CH - Ceiling Height



Floorplans

Gross internal area 516 sq ft (47.94 sq m)
For identification purposes only.

General

Tenure: Share of freehold, 991 years remaining

Local Authority: The Royal Borough of Kensington and Chelsea

Service Charge: £2,908.30 pa with an additional sinking fund of £1,155 pa

Council Tax: Band E

EPC Rating: C

Parking: The Royal Borough of Kensington and Chelsea parking permit

Broadband: Installed

South Kensington

90 Old Brompton Road, London, SW7 3LQ

020 7581 7000

southken@struttandparker.com
struttandparker.com

IMPORTANT NOTICE: Strutt & Parker gives notice that: 1. These particulars do not constitute an offer or contract or part thereof. 2. All descriptions, photographs and plans are for guidance only and should not be relied upon as statements or representations of fact. All measurements are approximate and not necessarily to scale. Any prospective purchaser must satisfy themselves of the correctness of the information within the particulars by inspection or otherwise. 3. Strutt & Parker does not have any authority to give any representations or warranties whatsoever in relation to this property (including but not limited to planning/building regulations), nor can it enter into any contract on behalf of the Vendor. 4. Strutt & Parker does not accept responsibility for any expenses incurred by prospective purchasers in inspecting properties which have been sold, let or withdrawn. 5. We are able to refer you to SPF Private Clients Limited ("SPF") for mortgage broking services, and to Alexander James Interiors ("AJI"), an interior design service. Should you decide to use the services of SPF, we will receive a referral fee from them of 25% of the aggregate of the fee paid to them by you for the arrangement of a mortgage and any fee received by them from the product provider. Should you decide to use the services of AJI, we will receive a referral fee of 10% of the net income received by AJI for the services they provide to you. 6. If there is anything of particular importance to you, please contact this office and Strutt & Parker will try to have the information checked for you. Photographs taken July 2025. Particulars prepared August 2025. Strutt & Parker is a trading style of BNP Paribas Real Estate Advisory & Property Management UK Limited



@struttandparker

Over 50 offices across England and Scotland,
including Prime Central London

For the finer things in property.

**STRUTT
& PARKER**

BNP PARIBAS GROUP