



Farleigh, 3 The Paddocks, Cove, Devon

For the finer things in property.

**STRUTT
& PARKER**

BNP PARIBAS GROUP

Farleigh, 3 The Paddocks, Cove, Tiverton, Devon EX16 7RX

A beautifully presented detached family home, set in an elevated position with magnificent countryside views

Bampton 3.5 miles, Tiverton 5.5 miles, M5 (Jct 27) 9.5 miles, Tiverton Parkway mainline station 9.7 miles (London Paddington 1 hour 57 minutes), Exeter 19.5 miles

Sitting room | Dining room | Kitchen/breakfast room | Utility | Study | Cloakroom | Principal bedroom with dressing room & en suite shower room | Three further bedrooms | Family bathroom | Garage | Garden | EPC rating D

The property

Farleigh offers a wealth of attractive and light-filled accommodation configured over two floors with well-proportioned rooms and much of the accommodation benefitting from superb views across the surrounding countryside.

The main reception room is the 22ft sitting room which has a feature fireplace and a triple-aspect allowing for a wealth of natural light as well as sliding glass doors that open onto the patio. The ground floor also has a further reception room which could be used as a dining room or family room, and a useful study for home working. The spacious kitchen and breakfast room has fitted units to base and wall level, granite worktops, modern integrated appliances including a double oven and ceramic hob with extractor fan and space for a large dining table. The kitchen also benefits from a triple-aspect allowing for plenty of natural light. The adjoining utility room provides space for further appliances and storage with the ground floor accommodation completed by a useful cloakroom.

Upstairs there is a spacious landing with a feature arched window and four double

bedrooms, including the generous principal bedroom which has a dressing room with fitted storage and en suite shower room. The first floor also has a family bathroom with a bath and a separate shower unit.

Outside

Farleigh is set at the end of a short lane in a peaceful and private position. There is plenty of parking at the front of the property and access to the detached single garage for further parking, storage or workshop space. The wrap-around garden includes rolling, split-level lawns with borders of established hedgerows and mature trees. There is also an ornamental pond and an area of paved terracing providing ideal space for al fresco dining. Much of the garden provides a splendid vantage point for taking in the far-reaching countryside views.

Location

Farleigh is set in an idyllic rural location in the peaceful village of Cove, five miles north of Tiverton and within easy reach of the beautiful Exmoor National Park. The small town of Bampton, three miles away, provides several everyday amenities including local shops, a small supermarket, a doctor's surgery and a primary school, while there is further primary schooling in the surrounding villages. Tiverton offers further amenities including high street shops, large supermarkets, leisure facilities and a choice of schooling, including the independent Blundell's School. The property is also within the catchment area for Uffculme School OFSTED rated outstanding if children attend Uplowman Primary School. Approximately 19 miles away is the cathedral city of Exeter, which offers a wide choice of cultural activities with theatres, the RAMM museum, an arts centre and a wealth of good shopping and restaurants, including John Lewis and a Waitrose supermarket. There are several primary and secondary schools, both state and independent, and Exeter University is recognised as one of the leading universities in the country.



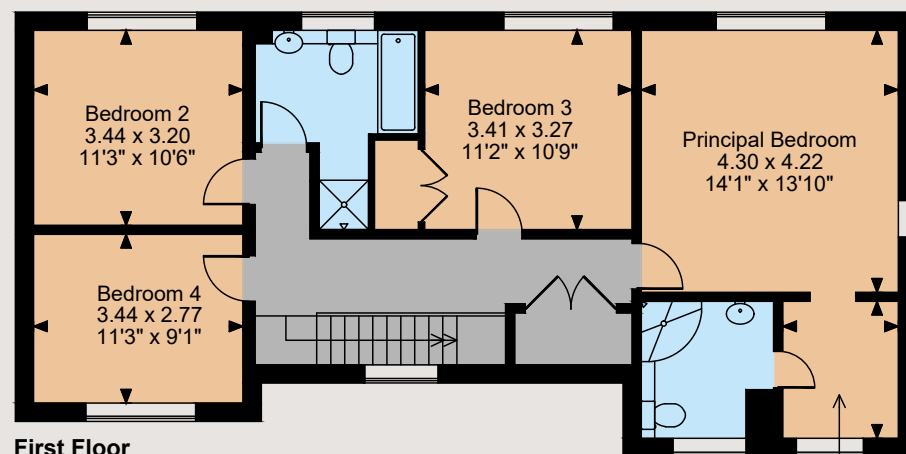
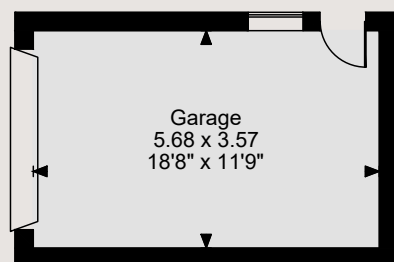
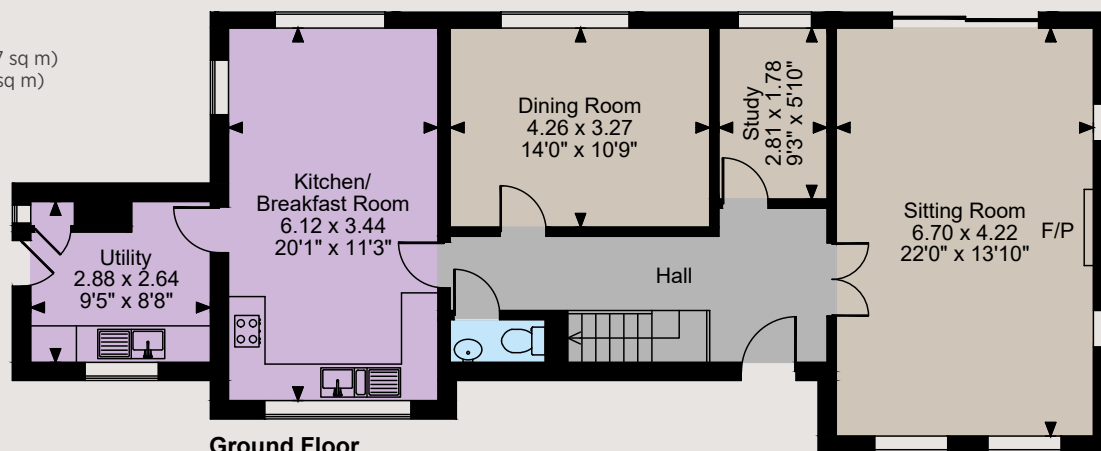


Floorplans

House internal area 1,908 sq ft (177 sq m)

Garage internal area 218 sq ft (20 sq m)

For identification purposes only.



The position & size of doors, windows, appliances and other features are approximate only.

© ehouse. Unauthorised reproduction prohibited. Drawing ref. dig/8587178/SS

The area is well connected by road with the M5 9 miles away offering routes towards Exeter, Taunton and Bristol, while Tiverton Parkway mainline station is just 9 miles away and runs direct services to London Paddington in just under 2 hours.

Directions

From Exeter, follow the M5 in the direction of Tiverton. At junction 27, take the exit and at the roundabout take the first exit onto the A361. Continue on the A361 for 6.4 miles, then at Bolham Roundabout, take the third exit onto the A396. After 3.9 miles, turn right onto Cove Hill. After 0.6 miles, you will find the entrance to the property on the left. What3Words///squaring.imprints.mincing brings you to the property's driveway.

General

Local Authority: Mid Devon District Council

Services: Mains electricity and water. Shared private drainage which we understand is compliant with current regulations.

Council Tax: Band F

Wayleaves and Easements: The property is sold subject to any wayleaves or easements, whether mentioned in these particulars or not.

Tenure: Freehold

Guide Price: £695,000

Exeter

24 Southernhay West, Exeter, Devon EX1 1PR

01392 215631

exeter@struttandparker.com

struttandparker.com

[@struttandparker](#)

[/struttandparker](#)

Over 45 offices across England and Scotland, including Prime Central London

IMPORTANT NOTICE: Strutt & Parker gives notice that: 1. These particulars do not constitute an offer or contract or part thereof. 2. All descriptions, photographs and plans are for guidance only and should not be relied upon as statements or representations of fact. All measurements are approximate and not necessarily to scale. Any prospective purchaser must satisfy themselves of the correctness of the information within the particulars by inspection or otherwise. 3. Strutt & Parker does not have any authority to give any representations or warranties whatsoever in relation to this property (including but not limited to planning/building regulations), nor can it enter into any contract on behalf of the Vendor. 4. Strutt & Parker does not accept responsibility for any expenses incurred by prospective purchasers in inspecting properties which have been sold, let or withdrawn. 5. We are able to refer you to SPF Private Clients Limited ("SPF") for mortgage broking services, and to Alexander James Interiors ("AJI"), an interior design service. Should you decide to use the services of SPF, we will receive a referral fee from them of 25% of the aggregate of the fee paid to them by you for the arrangement of a mortgage and any fee received by them from the product provider. Should you decide to use the services of AJI, we will receive a referral fee of 10% of the net income received by AJI for the services they provide to you. 6. If there is anything of particular importance to you, please contact this office and Strutt & Parker will try to have the information checked for you. Photographs taken 2023 and March 2024. Particulars prepared March 2024. Strutt & Parker is a trading style of BNP Paribas Real Estate Advisory & Property Management UK Limited



For the finer things in property.

