



Cranbury Road, Fulham, SW6

For the finer things in property.

STRUTT  
& PARKER

BNP PARIBAS GROUP

# Cranbury Road, Fulham, SW6

A charming three bedroom upper maisonette in the “Bury Triangle” area of Fulham.

Three bedrooms | One reception room | One bathroom | Flat  
EPC Rating C

This elegantly presented maisonette boasts a spacious layout across three floors including a mezzanine kitchen which floods the whole flat with natural light.

The property boasts two double bedrooms and one smaller bedroom, a generous and light reception room and the benefit of a shared garden that could be split by any incoming buyer to provide private use.

## Terms

**Tenure:** Leasehold 125 years from 31st March 1992

**Service Charge:** Circa £700 per annum

**Ground Rent:** £10 per annum

**Council Tax:** Band D

**Local Authority:** The London Borough of Hammersmith and Fulham

**Asking Price:** £925,000

## Fulham

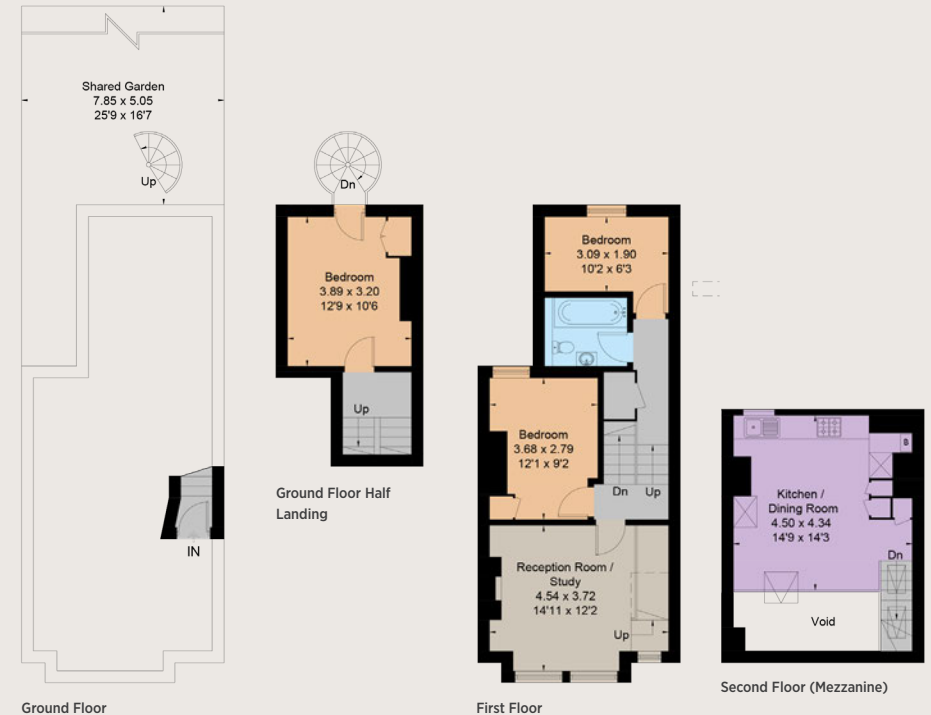
701 Fulham Road, London SW6 5UL

**020 7731 7100**

fulham@struttandparker.com



Gross Internal Area 891 sq ft (82.8 sq m)  
For identification purposes only.



### IMPORTANT NOTICE

Strutt & Parker gives notice that: 1. These particulars do not constitute an offer or contract or part thereof. 2. All descriptions, photographs and plans are for guidance only and should not be relied upon as statements or representations of fact. All measurements are approximate and not necessarily to scale. Any prospective purchaser must satisfy themselves of the correctness of the information within the particulars by inspection or otherwise. 3. Strutt & Parker does not have any authority to give any representations or warranties whatsoever in relation to this property (including but not limited to planning/building regulations), nor can it enter into any contract on behalf of the Vendor. 4. Strutt & Parker does not accept responsibility for any expenses incurred by prospective purchasers in inspecting properties which have been sold, let or withdrawn. 5. We are able to refer you to SPF Private Clients Limited ("SPF") for mortgage broking services, and to Alexander James Interiors ("AJI"), an interior design service. Should you decide to use the services of SPF, we will receive a referral fee from them of 25% of the aggregate of the fee paid to them by you for the arrangement of a mortgage and any fee received by them from the product provider. Should you decide to use the services of AJI, we will receive a referral fee of 10% of the net income received by AJI for the services they provide to you. 6. If there is anything of particular importance to you, please contact this office and Strutt & Parker will try to have the information checked for you. Photographs taken April 2024. Particulars prepared April 2024 Strutt & Parker is a trading style of BNP Paribas Real Estate Advisory & Property Management UK Limited.



Over 50 offices across England and Scotland,  
including Prime Central London

For the finer things in property.

**STRUTT  
& PARKER**

BNP PARIBAS GROUP