

Crescent Mansions,
Elgin Crescent, Notting Hill



Strutt
& Parker

Land and property. Since 1885.

A wonderful three bedroom flat in this well regarded mansion building with access to communal gardens.

This bright and spacious top floor flat benefits from excellent entertaining space, with an open plan reception/dining room and a separate modern kitchen. There are three bedrooms with ample storage and one shower room. The flat also benefits from access to communal gardens.



Location

Elgin Crescent is an extremely popular address in the heart of the garden square network of roads in Notting Hill and therefore benefits from its close proximity to all the shops, boutiques, cafés and restaurants of Westbourne Grove and Portobello Road. The transport facilities of Ladbroke Grove, Westbourne Grove and Notting Hill Gate are nearby.

Postcode region: W11

General

Tenure: Share of freehold, 999 years from 25th December 1975
Local Authority: The Royal Borough of Kensington and Chelsea
Council Tax: Band F
EPC Rating: D
Service Charge: Approximately 1st Jan 2026 - 30th June 2026 - £2,412.98 including a contribution to the sinking fund
Parking: Residents' permit
Mobile coverage and broadband: Information can be found here: <https://checker.ofcom.org.uk/en-gb/mobile-coverage>

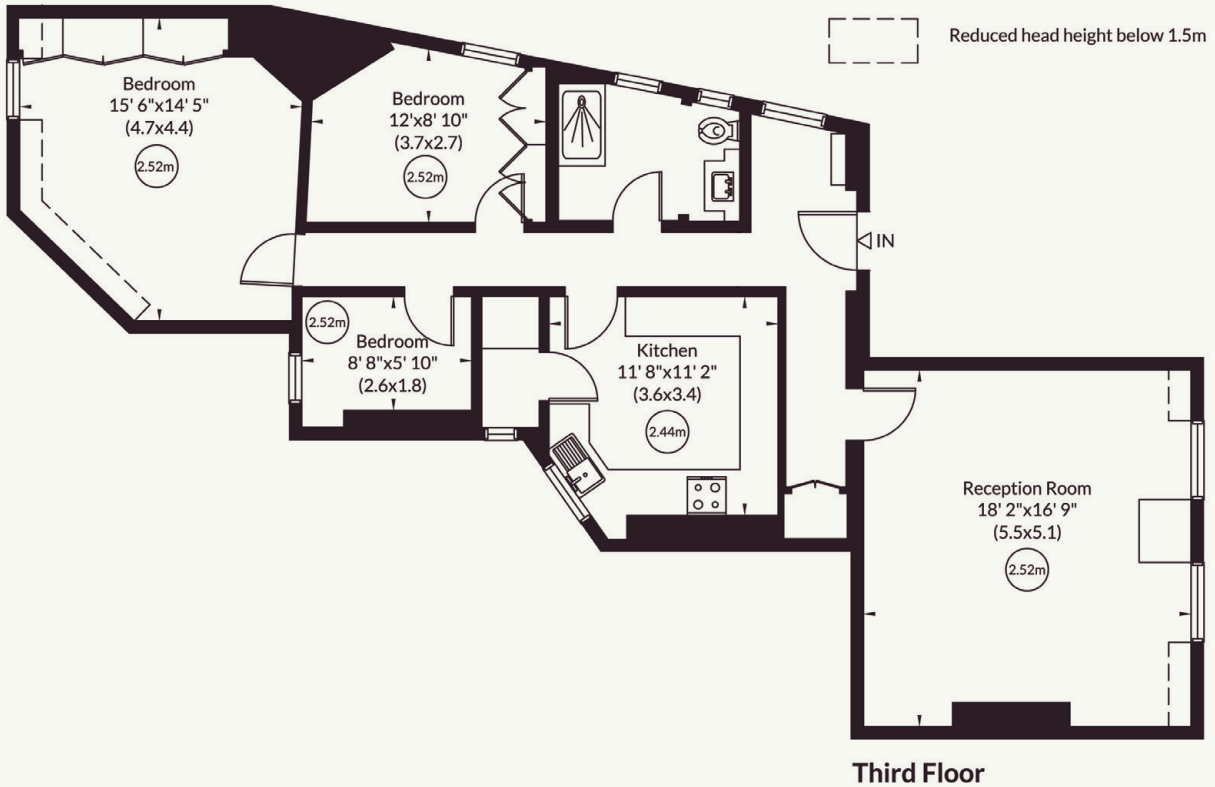
1,100 sq ft (102 sq m)
Reception/dining room
Kitchen
Three bedrooms
Bathroom
Communal garden access
Share of Freehold

Guide price £1,700,000



Approximate Gross Internal Area
102 sq m/ 1100 sq ft Including Limited Use Area

Not to Scale, for identification only



For guidance only and must not be relied upon as a statement of fact or used for valuation purposes.

All measurements and areas are approximate only (and have been prepared in accordance with the current edition of the RICS Code of Measuring Practice).



Strutt & Parker Notting Hill

303 Westbourne Grove, London, W11 2QA

020 7221 1111 | nottinghill@struttandparker.com



@struttandparker

struttandparker.com

IMPORTANT NOTICE: Strutt & Parker gives notice that: 1. These particulars do not constitute an offer or contract or part thereof. 2. All descriptions, photographs and plans are for guidance only and should not be relied upon as statements or representations of fact. All measurements are approximate and not necessarily to scale. Any prospective purchaser must satisfy themselves of the correctness of the information within the particulars by inspection or otherwise. 3. Strutt & Parker does not have any authority to give any representations or warranties whatsoever in relation to this property (including but not limited to planning/building regulations), nor can it enter into any contract on behalf of the Vendor. 4. Strutt & Parker does not accept responsibility for any expenses incurred by prospective purchasers in inspecting properties which have been sold, let or withdrawn. 5. We are able to refer you to SPF Private Clients Limited ("SPF") for mortgage broking services, and to Alexander James Interiors ("AJI"), an interior design service. Should you decide to use the services of SPF, we will receive a referral fee from them of 25% of the aggregate of the fee paid to them by you for the arrangement of a mortgage and any fee received by them from the product provider. Should you decide to use the services of AJI, we will receive a referral fee of 10% of the net income received by AJI for the services they provide to you. 6. If there is anything of particular importance to you, please contact this office and Strutt & Parker will try to have the information checked for you. Strutt & Parker is a trading style of BNP Paribas Real Estate Advisory & Property Management UK Limited. Photographs taken May 2026. Particulars prepared May 2026.

Strutt
& Parker

Land and property. Since 1885.