

Cresswell Place

CHELSEA SW10







A sophisticated, spacious
and impeccably presented
five-bedroom house
discreetly positioned within
the borders of Chelsea
and South Kensington

A wide low-built Chelsea house, finished and presented with impeccable taste and elegance. Transformed by the current owner-occupier, this striking home offers a rare opportunity to acquire a truly spectacular freehold residence.

Upon entering the impressively wide entrance hall, the vibrant character of the interior design sets the stage. A harmonious balance of colours, patterns, and textures seamlessly leads into a world of perfectly curated elegance. An east-west aspect ensures abundant natural light throughout, with large French windows on the first-floor half-landing and skylights at the rear maximising sunlight in the morning and afternoon.

From the hall, large double doors open into a spacious, uninterrupted drawing room. Spanning nearly 24ft in width, the room features a stunning marble fireplace as its central focal point.

The dining room, also accessed via large double doors from the entrance hall, is cleverly designed with an antique mirrored wall, creating a wonderful sense of depth. The kitchen centres around an impressively large island, extending nearly four metres, and benefits from a skylight that floods the space with natural light.

The ground floor also offers a beautifully finished study/TV room, illuminated by a large skylight, ensuring excellent natural light. A discreetly placed cloakroom completes this level.

The lower ground floor boasts ceiling heights exceeding 2.7m, providing a bright and airy feel. This level includes an impressive family/media room, ideal for movie nights. Finished with bespoke backlit joinery and a warm colour palette, it exudes comfort and style. Additionally, the lower level comprises a bedroom with an en suite bathroom, a guest WC, a spacious utility room, storage cupboards and wine cellar.

The half-landing offers French doors onto a wonderful secluded 35ft long terrace.

The upper floors feature four double bedrooms, beautifully decorated each with luxurious en suite bathrooms.

The first floor hosts the principal bedroom, complete with a private dressing room and an elegant en suite bathroom, alongside a second double bedroom suite.

The second floor offers two further double bedrooms, both featuring en suite bathrooms and excellent fitted storage. This floor also includes a practical plant room, which doubles as a highly functional linen cupboard.





Location

Cresswell Place is an attractive cobbled mews, offering a discreet but perfectly convenient location to Chelsea, South Kensington and Knightsbridge. The property is located approximately 0.5mi away from Gloucester Road Tube Station (Piccadilly, District and Circle lines). Many famous nearby landmarks include The Natural History Museum (0.8mi), The Victoria & Albert Museum (0.8mi), Hyde Park (1mi) and Harrods (1.3mi). There are many shops, restaurants, bars and supermarkets within the local vicinity. *All distances are approximate.*







Tenure
Freehold

Guide Price
£7,950,000

Local Authority
The Royal
Borough of
Kensington
& Chelsea

Council Tax
Band H

Parking
Residents' Permit

Broadband
Installed at the
property

EPC
Rating D

Approximate Area

3,906 sq ft / 362.9 sq m

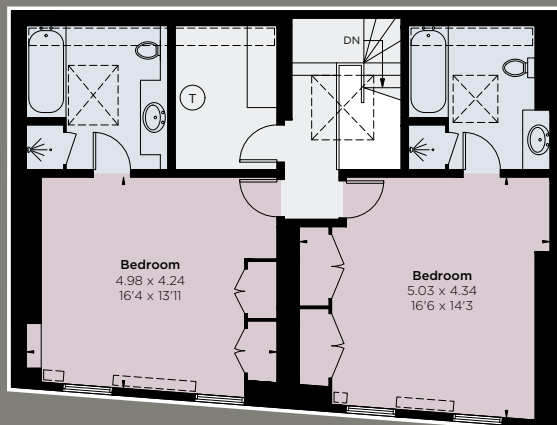
including limited use area 84 sq ft / 7.8 sq m

CH: Ceiling height

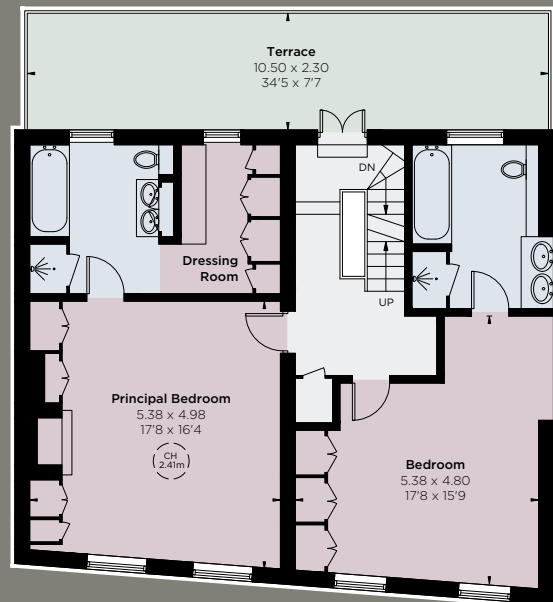
This plan is for layout guidance only. Not drawn to scale unless stated. Windows and door openings are approximate. Whilst every care is taken in the preparation of this plan, please check all dimensions, shapes and compass bearings before making any decisions reliant upon them.

This plan has been supplied to The Brochure by Savills.

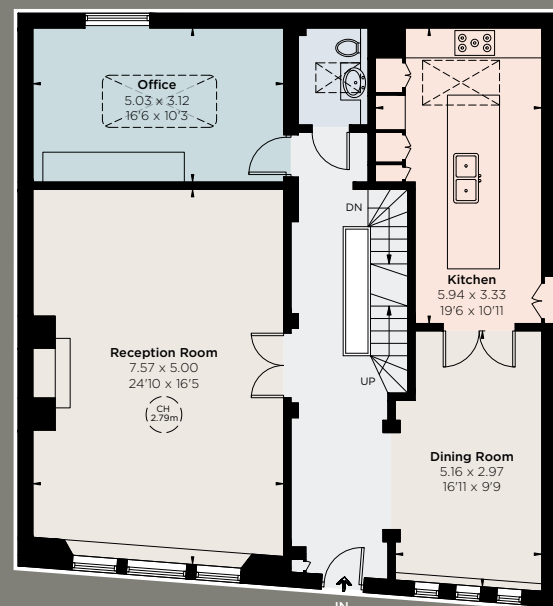
Second Floor



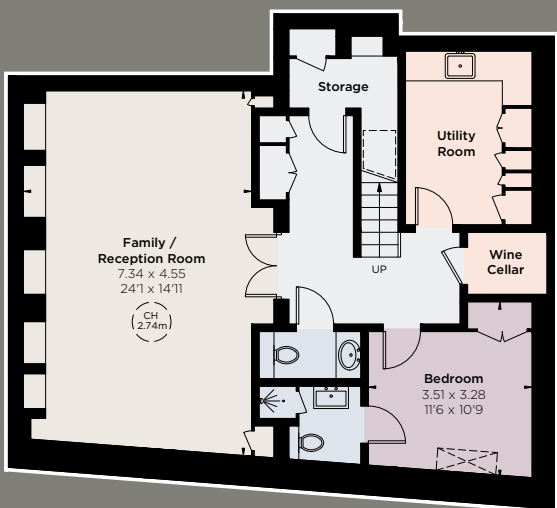
First Floor



Ground Floor



Lower Ground Floor



IMPORTANT NOTICE: Strutt & Parker gives notice that: 1. These particulars do not constitute an offer or contract or part thereof. 2. All descriptions, photographs and plans are for guidance only and should not be relied upon as statements or representations of fact. All measurements are approximate and not necessarily to scale. Any prospective purchaser must satisfy themselves of the correctness of the information within the particulars by inspection or otherwise. 3. Strutt & Parker does not have any authority to give any representations or warranties whatsoever in relation to this property (including but not limited to planning/building regulations), nor can it enter into any contract on behalf of the Vendor. 4. Strutt & Parker does not accept responsibility for any expenses incurred by prospective purchasers in inspecting properties which have been sold, let or withdrawn. 5. We are able to refer you to SPF Private Clients Limited ("SPF") for mortgage broking services, and to Alexander James Interiors ("AJI"), an interior design service. Should you decide to use the services of SPF, we will receive a referral fee from them of 25% of the aggregate of the fee paid to them by you for the arrangement of a mortgage and any fee received by them from the product provider. Should you decide to use the services of AJI, we will receive a referral fee of 10% of the net income received by AJI for the services they provide to you. 6. If there is anything of particular importance to you, please contact this office and Strutt & Parker will try to have the information checked for you. Photographs taken July 2025. Particulars prepared July 2025. Strutt & Parker is a trading style of BNP Paribas Real Estate Advisory & Property Management UK Limited. 22/09/25S&P-250905-05-GG-FOC

THE
BROCHURE

140 Fulham Road, SW10 9PY

+44 (0)20 7373 1010

chelseasw10@struttandparker.com
struttandparker.com

Over 50 offices across England and
Scotland, including Prime Central London



@struttandparker

For the finer things in property.



BNP PARIBAS GROUP