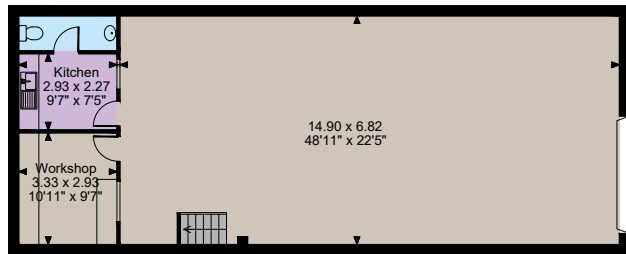


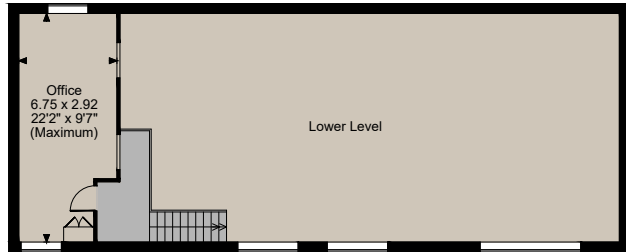


The Pack House

Crittenden Road, Matfield, Tonbridge



Ground Floor



First Floor

The position & size of doors, windows, appliances and other features are approximate only.
© ehouse. Unauthorised reproduction prohibited. Drawing ref. dia/8654511/SS



An impressive brick built detached building with planning permission

Floorplans

House internal area 1,577 sq ft (146 sq m)
For identification purposes only.

Description

An exciting opportunity to purchase a former Pack House with planning permission by Tunbridge Wells Borough Council passed under reference 24/01661/ FULL for change of use to create a live/work unit.

Planning: Prospective purchasers are advised that they should make their own enquiries to the local planning authority.

The Pack House is an impressive brick-built detached building offering almost 1,600 sq ft of light-filled flexible space arranged partly over two floors and connected to mains electricity, water and drainage. A large double height and double width roller door opens to an extensive double-height vaulted space measuring 48' 11" by 22' 5", with concreted flooring and doors at the end of the space opening to a workshop with timber benches and to a neighbouring fitted kitchen with useful en suite cloakroom.

Internal stairs rise to a first floor mezzanine landing, opening to a full-width dual aspect office with fitted storage and internal glazing overlooking the space below.

Outside

Occupying an 1.25 acre plot and set well back from the road, The Pack House is approached over a concrete driveway and forecourt providing private parking for multiple vehicles. Further unmade hardstanding wraps around the property to both sides and to the rear, on one side opening to an area of heathland and woodland incorporating a natural pond.

General

Tenure: Freehold

Local Authority: Tunbridge Wells District Council

Mobile and Broadband checker: Information can be found here <https://checker.ofcom.org.uk/en-gb/>

Service Charge: Mains electricity, water and drainage



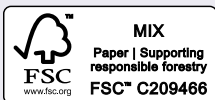
IMPORTANT NOTICE: Strutt & Parker gives notice that: 1. These particulars do not constitute an offer or contract or part thereof. 2. All descriptions, photographs and plans are for guidance only and should not be relied upon as statements or representations of fact. All measurements are approximate and not necessarily to scale. Any prospective purchaser must satisfy themselves of the correctness of the information within the particulars by inspection or otherwise. 3. Strutt & Parker does not have any authority to give any representations or warranties whatsoever in relation to this property (including but not limited to planning/building regulations), nor can it enter into any contract on behalf of the Vendor. 4. Strutt & Parker does not accept responsibility for any expenses incurred by prospective purchasers in inspecting properties which have been sold, let or withdrawn. 5. We are able to refer you to SPF Private Clients Limited ("SPF") for mortgage broking services, and to Alexander James Interiors ("AJI"), an interior design service. Should you decide to use the services of SPF, we will receive a referral fee from them of 25% of the aggregate of the fee paid to them by you for the arrangement of a mortgage and any fee received by them from the product provider. Should you decide to use the services of AJI, we will receive a referral fee of 10% of the net income received by AJI for the services they provide to you. 6. If there is anything of particular importance to you, please contact this office and Strutt & Parker will try to have the information checked for you. Photographs taken July 2025. Particulars prepared July 2025. Strutt & Parker is a trading style of BNP Paribas Real Estate Advisory & Property Management UK Limited

Sevenoaks

15 Bank Street, Sevenoaks, Kent TN13 1UW

01732 459900

branch@struttandparker.com
struttandparker.com



@struttandparker

Over 50 offices across England and Scotland,
including Prime Central London

For the finer things in property.

