

Dorset House, 5 Dartford Road
Sevenoaks



Strutt
& Parker

Land and property. Since 1885.

An impressive town house in a prime location overlooking The Vine

This classically proportioned house has light filled rooms, a courtyard garden and secure parking. Superbly positioned in central Sevenoaks

Dorset House is a townhouse, occupying a prime central position with stunning views over The Vine and within striking distance of the High Street. Built in 2012, this elegant home offers beautifully presented accommodation arranged over three floors, ideal for modern living and informal entertaining, with the convenience of a lift serving all levels.

The property showcases high ceilings with decorative detailing, a feature fireplace, and arched sash windows that flood the rooms with natural light. A stylish kitchen and luxurious Villeroy & Boch bathroom suites complement the sophisticated design, while American oak finishes and underfloor heating add warmth and character throughout. A large lightwell enhances the sense of space, and recessed lighting creates a contemporary feel.

Outside, the west-facing enclosed walled garden provides a delightful setting for relaxation, while ample off-road parking includes a car port and secure underground parking in the a joining Sackville Place adds practicality to this superb home.



Location

Dorset House is set in a superb central Sevenoaks position opposite the historic Vine Cricket Ground. It is superbly located for both the station with mainline links to London Bridge, and Charing Cross (approx. 0.4 miles) and High Street with its range of shops, restaurants and supermarkets (140 yards).

The property is conveniently situated for numerous amenities including cricket at The Vine, golf at Knole and Wildernesse, The Stag theatre and cinema, Sevenoaks Leisure Centre, Knole Park and tennis at Hollybush.

The house is well-placed for a variety of schools including internationally renowned Sevenoaks School, Solefields, New Beacon, Lady Boswell's, The Granville and Walthamstow Hall to name a few.

Postcode region: TN13

General

Local Authority: Sevenoaks

Services: All mains, including gas

Council Tax: Band G

EPC Rating: B

Mobile and Broadband checker: Information can be found here <https://checker.ofcom.org.uk/en-gb/>

2509 sq ft (233.1 sq m)

Prime central location

5 bedrooms

West-facing garden

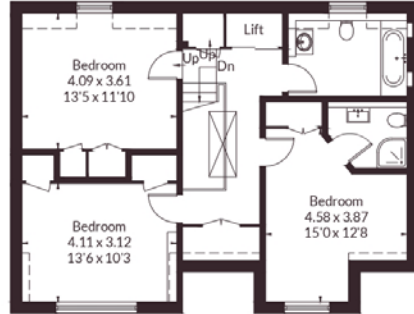
Ample off-road parking

Freehold | Sevenoaks

Guide price £2,500,000



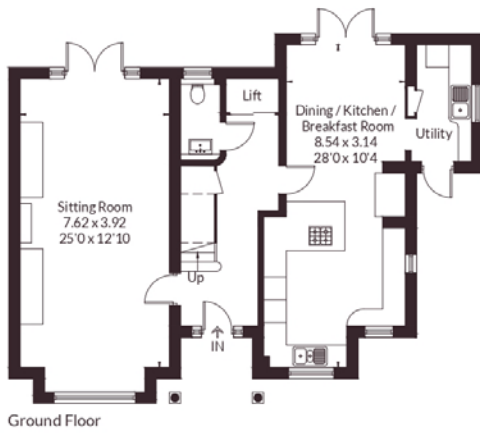
Approximate Floor Area = 233.1 sq m / 2509 sq ft
 Outbuilding = 3.9 sq m / 42 sq ft (Excluding Car Barn)
 Total = 237 sq m / 2551 sq ft



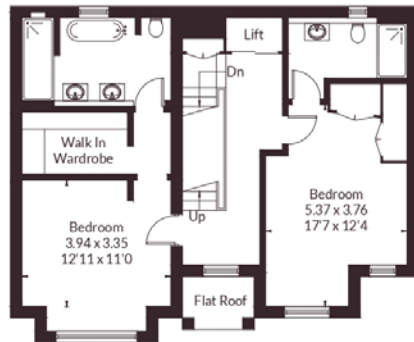
Second Floor



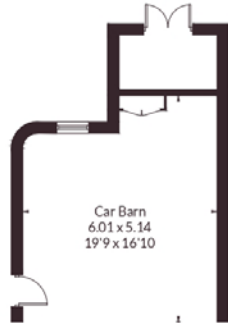
Car Park
 (Not Shown In Actual Location / Orientation)



Ground Floor



First Floor



Car Barn
 6.01 x 5.14
 19'9 x 16'10
 (Not Shown In Actual Location / Orientation)



This floor plan has been drawn in accordance with RICS Property Measurement 2nd edition.
 All measurements, including the floor area, are approximate and for illustrative purposes only. @fourwalls-group.com #108055

Sevenoaks

15 Bank Street, Sevenoaks, Kent TN13 1UW
 01732 459900 | sevenoaks@struttandparker.com



@struttandparker struttandparker.com

IMPORTANT NOTICE: Strutt & Parker gives notice that: 1. These particulars do not constitute an offer or contract or part thereof. 2. All descriptions, photographs and plans are for guidance only and should not be relied upon as statements or representations of fact. All measurements are approximate and not necessarily to scale. Any prospective purchaser must satisfy themselves of the correctness of the information within the particulars by inspection or otherwise. 3. Strutt & Parker does not have any authority to give any representations or warranties whatsoever in relation to this property (including but not limited to planning/building regulations), nor can it enter into any contract on behalf of the Vendor. 4. Strutt & Parker does not accept responsibility for any expenses incurred by prospective purchasers in inspecting properties which have been sold, let or withdrawn. 5. We are able to refer you to SPF Private Clients Limited ("SPF") for mortgage broking services, and to Alexander James Interiors ("AJI"), an interior design service. Should you decide to use the services of SPF, we will receive a referral fee from them of 25% of the aggregate of the fee paid to them by you for the arrangement of a mortgage and any fee received by them from the product provider. Should you decide to use the services of AJI, we will receive a referral fee of 10% of the net income received by AJI for the services they provide to you. 6. If there is anything of particular importance to you, please contact this office and Strutt & Parker will try to have the information checked for you. Strutt & Parker is a trading style of BNP Paribas Real Estate Advisory & Property Management UK Limited. Photographs taken May 2026. Particulars prepared May 2026.

Strutt & Parker

Land and property. Since 1885.