



Felder Lodge, Worth, Nr. Sandwich, Kent

For the finer things in property.

**STRUTT
& PARKER**

BNP PARIBAS GROUP

Felder Lodge Deal Road, Worth (Nr. Sandwich), Kent CT14 0BD

A substantial family home offering excellent accommodation with fine period detailing, set in a mature garden and close to the popular town of Sandwich and the Kent coast.

Sandwich station 1.4 miles (London St Pancras from 92 minutes), Deal 4.5 miles, Dover 11.4 miles, Canterbury 14.7 miles, Eurotunnel 22 miles, M2 (Junction 7) 28.1 miles

Felder Lodge: Reception hall | Drawing room
Sitting room | Dining room | Billiard room
Study | Kitchen/breakfast room | Wine cellar
Boiler room | 2 Cloakrooms | Principal bedroom
with en suite and dressing room/bedroom 7
5 Further bedrooms (3 en suite) | 2 Family
bathrooms | Shower room | Attic room | EPC E
Coach House annexe: Sitting room | Kitchen
2 Bedrooms | Bathroom | EPC E
Garden | 3 Garden stores | Quadruple garage
About 1.25 acres

History

Felder Lodge offers a handsome family home of great quality and fine proportions. Built in 1907 and laid out to an 'H' plan, a further wing is thought to have been added at a later date to accommodate an impressive billiard room with a barrel-vaulted ceiling. Solid oak windows with leaded lights and numerous fireplaces are some of the features found within the house and are classic of the era.

The property was originally built for Admiral Sir Reginald Henderson. Born in Worth, Henderson had a distinguished naval career and is regarded as the "father" of the Royal Australian Navy. This maritime connection is acknowledged in the charming anchor motif found on the window fastenings.

Felder Lodge was also home for a time to Wing Commander John Leighton Beck. Noted for a wartime career of constant action, Beck served in most of the major air theatres as a pilot and commander as well as directing tactical air operations, winning his first DFC in 1940. He and his wife enjoyed playing golf at Sandwich. The butler's bells at the house still bear the Beck name.

The property

The striking double entrance door with stone carved surround opens to a lobby with the reception hall beyond, from where a large window floods the space with light and a solid wooden staircase rises to the first floor.

The well-proportioned reception rooms to one side comprise a drawing room with views across the garden and a sitting room to the front. Beyond is the magnificent billiard room which provides a sensational formal entertaining space with a rich herringbone parquet floor.

The kitchen/breakfast room is a welcoming space fitted with a good range of cabinetry, with plenty of room for a table for day-to-day use. The adjacent double aspect dining room offers a more formal space overlooking the gardens. A front facing study provides a convenient space next to the kitchen/breakfast room.

The first and second floors provide generous, well-appointed accommodation of up to seven bedrooms and bathrooms. The principal bedroom suite stretches across the west wing of the house and includes a generous dressing room/bedroom 7 and a bathroom which can also be accessed from the landing, allowing flexibility. The second bedroom offers a lovely guest suite with a dressing area and en suite bathroom. On this floor there are two further bedrooms, one of which has a dressing room accessed via a spiral staircase. There is also a family bathroom and a separate shower.

The second floor provides two further bedrooms, a bathroom and a large attic room.

















Outside

Set off a private no through road, Felder Lodge has an impressive approach over a carriage drive with wrought iron electric gates.

The house sits in a private and secluded setting, having a well established garden with mature trees and borders. A fabulous south-facing terrace stretches across the back, providing a wonderful space in which to relax and entertain.

A detached garage building provides extensive garaging for several cars with a self-contained flat above comprising a sitting room, kitchen, two bedrooms and a bathroom.

Location

Worth village is centred on a pretty duck pond and church with a primary school and two public houses. Felder Lodge is just 1.6 miles away from the heart of the popular Sandwich. The thriving coastal town of Deal is also within easy reach and both enjoy "Links" golf courses along with a range of further facilities, including shops and recreational amenities.

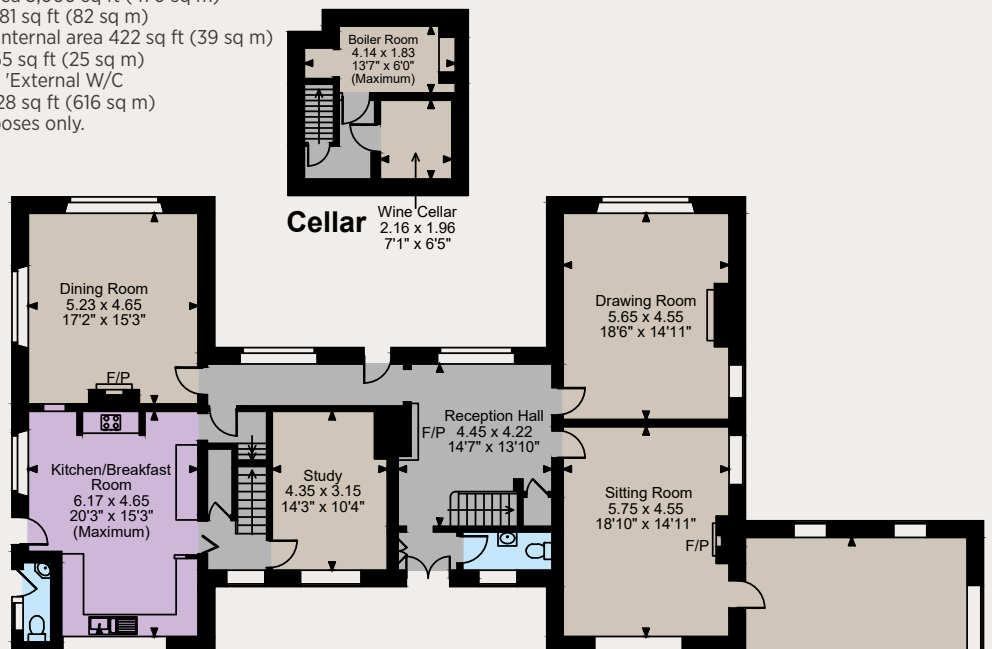
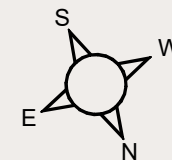
Canterbury offers a plentiful array of restaurants, together with a shopping centre and notable schooling options. Convenient transport links can be found via the A2, A258 and M2. Sandwich station provides rail connections to London as will Thanet Parkway station at Cliffs End (due to open in 2023).

There is good access to the Continent via the Port of Dover and the Channel Tunnel terminal.

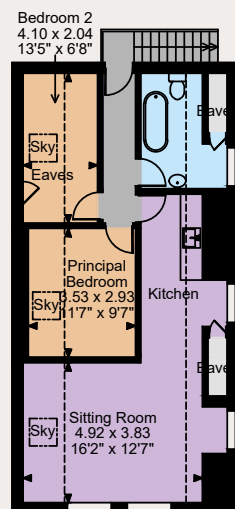




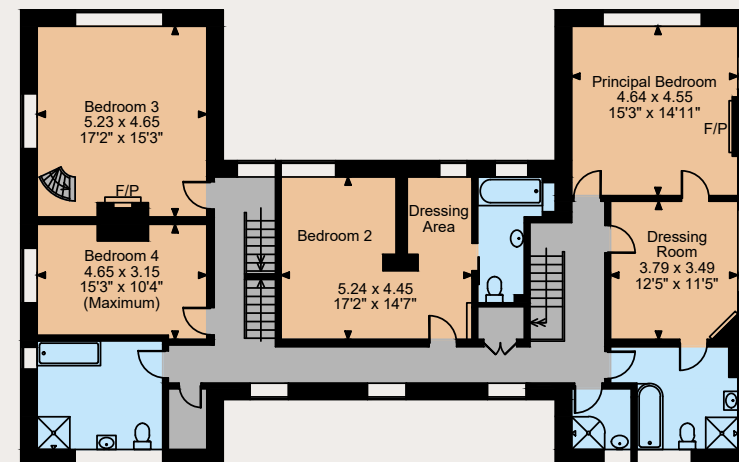
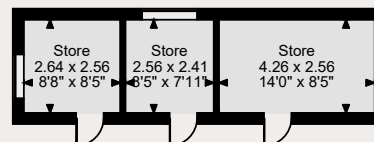
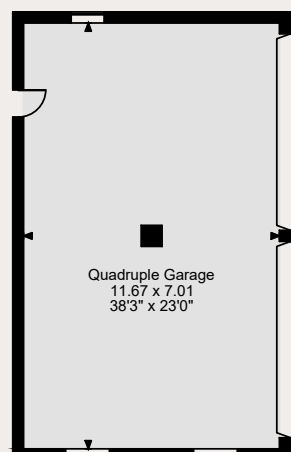
Felder Lodge Deal Road, Worth
 Main House internal area 5,060 sq ft (470 sq m)
 Garage internal area 881 sq ft (82 sq m)
 Coach House Annexe internal area 422 sq ft (39 sq m)
 Stores internal area 265 sq ft (25 sq m)
 Quoted Area Excludes 'External W/C
 Total internal area 6,628 sq ft (616 sq m)
 For identification purposes only.



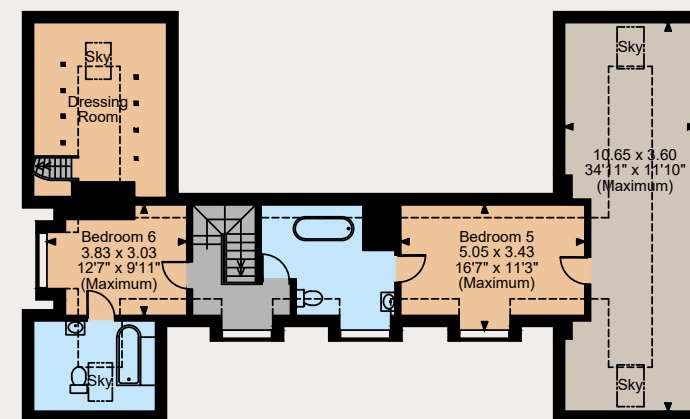
Ground Floor



Coach House Annexe



First Floor



Second Floor

The position & size of doors, windows, appliances and other features are approximate only.

□ □ □ Denotes restricted head height

© ehouse. Unauthorised reproduction prohibited. Drawing ref. dig/8563287/SLU



Directions

From Canterbury: Take the A257 towards Sandwich. At the roundabout on the outskirts of Sandwich turn right onto the A256 and after about a mile turn left onto the A258 towards Deal. After 0.75 mile, on the outskirts of Worth and after Felderland Lane, turn right (after the bus stop and before the turning to the village of Worth) into a private road. You will see the Felder Lodge sign at the entrance to the private road. The house is the first on the left.

General

Local Authority: Dover District Council

Services: Mains electricity, drainage and water. Oil fired central heating.

Council Tax: Band G

Tenure: Freehold

Guide Price: £1,395,000

Mobile coverage/broadband: Information can be found here

<https://checker.ofcom.org.uk/en-gb/mobile-coverage>

Canterbury

2 St Margaret's Street, Canterbury, Kent CT1 2SL

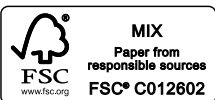
01227 473700

canterbury@struttandparker.com
struttandparker.com

IMPORTANT NOTICE: Strutt & Parker gives notice that: 1. These particulars do not constitute an offer or contract or part thereof. 2. All descriptions, photographs and plans are for guidance only and should not be relied upon as statements or representations of fact. All measurements are approximate and not necessarily to scale. Any prospective purchaser must satisfy themselves of the correctness of the information within the particulars by inspection or otherwise. 3. Strutt & Parker does not have any authority to give any representations or warranties whatsoever in relation to this property (including but not limited to planning/building regulations), nor can it enter into any contract on behalf of the Vendor. 4. Strutt & Parker does not accept responsibility for any expenses incurred by prospective purchasers in inspecting properties which have been sold, let or withdrawn. 5. We are able to refer you to SPF Private Clients Limited ("SPF") for mortgage broking services, and to Alexander James Interiors ("AJI"), an interior design service. Should you decide to use the services of SPF, we will receive a referral fee from them of 25% of the aggregate of the fee paid to them by you for the arrangement of a mortgage and any fee received by them from the product provider. Should you decide to use the services of AJI, we will receive a referral fee of 10% of the net income received by AJI for the services they provide to you. 6. If there is anything of particular importance to you, please contact this office and Strutt & Parker will try to have the information checked for you. Photographs taken July 2023. Particulars revised February 2026. Strutt & Parker is a trading style of BNP Paribas Real Estate Advisory & Property Management UK Limited



Over 45 offices across England and Scotland, including Prime Central London



For the finer things in property.

