

Hepburn House,
Diptford, Totnes



Strutt
& Parker

Land and property. Since 1885.



An exceptional country property with a detached annexe, set on the banks of the River Avon and surrounded by approximately 20 acres of beautifully maintained grounds. The property benefits from woodland, fishing rights, outbuildings and equestrian facilities.

The property

Hepburn House is an impressive family home, offering over 3,000 sq ft of thoughtfully designed and beautifully appointed accommodation. Positioned in a stunning rural setting, beside the River Avon and within the South Devon National Landscape, the property showcases stone and timber-clad elevations, while the interior blends character features with stylish contemporary finishes. The property has been renovated by the current vendors and offers excellent eco-credentials with an EPC rating B.

The ground floor is designed for modern living and entertaining, with a semi open-plan layout connecting the sitting room and the striking kitchen/dining area. The sitting room has a modern fireplace and French doors that open onto the gardens, while the expansive 28ft kitchen/dining room features a vaulted ceiling with exposed timber beams and a triple aspect, including bi-fold doors and skylights that flood the space with natural light. There is space for a large family dining table, while the bespoke kitchen is fitted with modern units, a central island with breakfast bar and a range cooker. A separate utility room provides further space for storage and appliances.

Additional living space includes the comfortable Snug, while the ground floor also has one double bedroom with an en suite shower room offering versatile accommodation. Upstairs, the galleried landing leads to two double bedrooms and the impressive principal bedroom which offers built-in storage, an en suite shower room with double vanity and a Juliet balcony maximising the exceptional views. A contemporary family bathroom with a bath and a separate shower unit serves this floor. Stairs rise to a second-floor room, ideal as a study, additional bedroom or storage space.

The detached annexe provides further well-appointed additional accommodation. Currently configured over the first floor, the annexe accommodation comprises an open-plan living area, kitchen and bedroom served by an en suite shower room while the ground floor offers a generous studio space suitable for a variety of uses.

Outside

The property is nestled in a private and secluded setting surrounded by enchanting gardens that run to the banks of the River Avon and include a beautiful timber deck at the water's edge. The grounds include rolling lawns with well-stocked colourful flower beds and shrubs, an orchard and peaceful wooded meadows carpeted by seasonal bluebells. Beyond the gardens are fenced paddocks providing ideal use for equestrian purposes or for grazing livestock while there is also a large area of hard standing. The gently flowing River Avon runs alongside the grounds offering an idyllic waterside setting and valuable fishing rights. Outbuildings include a hay barn, a field shelter with stable door fittings and three large stores. The property also benefits from planning permission for the construction of an equestrian barn. Further information can be found on the South Hams planning portal.

Two reception rooms | Four bedrooms | Three bathrooms | One-bedroom annexe with studio below | Field shelter | Stores | Hay barn | Planning permission for equestrian barn | Direct river frontage | Fishing rights | Woodland | Paddocks | Approximately 20 acres | 4,482 sq ft

Guide price £2,350,000

Location

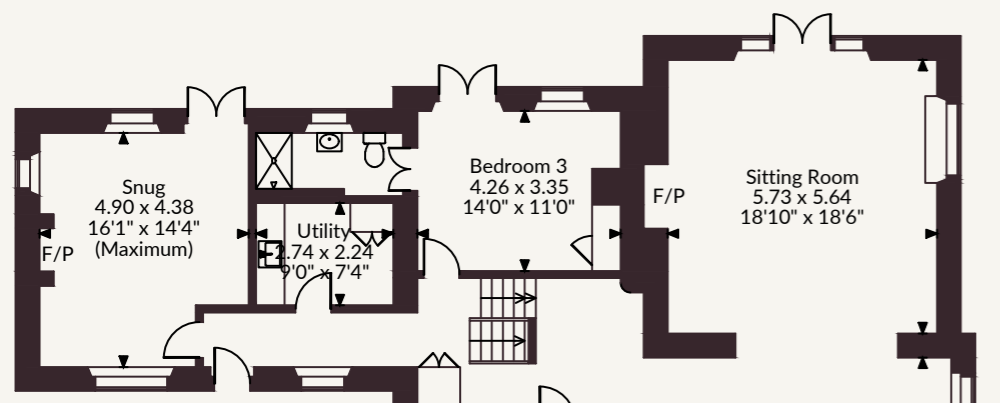
The property is set in a picturesque rural location, close to the small and peaceful village of Diptford, on the edge of the South Devon National Landscape. The village has a community hall, a 14th century parish church and a popular primary school, while a range of amenities can be found in nearby Totnes, South Brent, Modbury and Kingsbridge. Facilities at Totnes include a variety of shops, supermarkets, galleries and public houses and a choice of schooling as well as a mainline station with direct services to London Paddington. The area is well connected by road, with the A380 providing easy access towards Torquay and Exeter to the north, and the A385 connecting to the A38 towards Plymouth.

The surrounding area including nearby Dartmoor National Park offers excellent opportunities for walking and riding, while numerous opportunities for sailing are also close by at Dartmouth and Salcombe. The area provides a good range of state schooling including Diptford Parochial C of E Primary School and Ivybridge Community College together with excellent secondary schools in Totnes and Kingsbridge, Torquay's renowned Grammar schools and a selection of established independent schools including Totnes Progressive, Park, St. Christopher's Staverton, Sands and Stover at Newton Abbot.

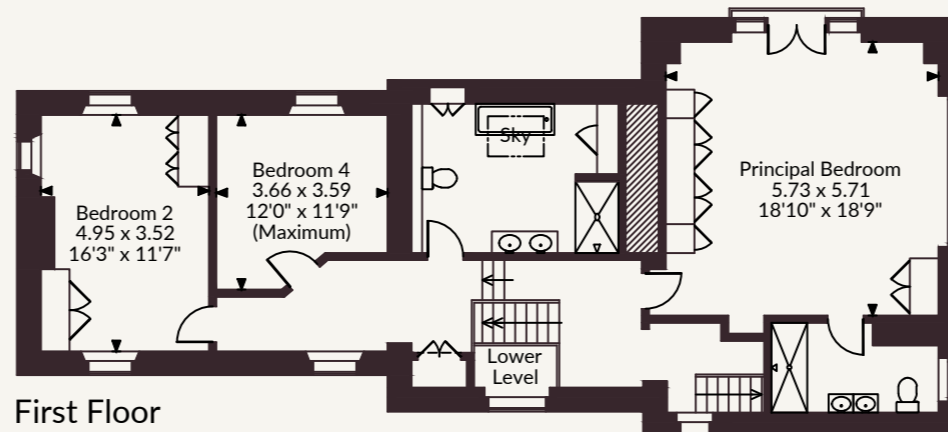
General

Local Authority: South Hams District Council
Services: Mains electricity. Private water. Private drainage which we understand is compliant with current regulations. Ground Source Heat Pump. Underfloor heating. 9kw photovoltaic panels.
Council Tax: Band G. Tenure: Freehold
EPC Rating: B. Annex: B
Planning Reference: 1186/18/FUL. Prospective purchasers are advised that they should make their own enquiries of the local planning authority.
Right of Way: A public footpath crosses part of the property's boundary. Further information is available through the vendors agent.
Wayleaves and Easements: the property is sold subject to any wayleaves or easements, whether mentioned in these particulars or not.
Mobile Coverage/Broadband: Information can be found here <https://checker.ofcom.org.uk/en-gb/>

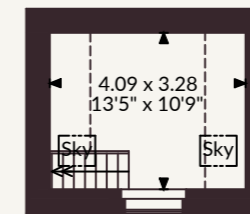
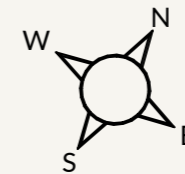




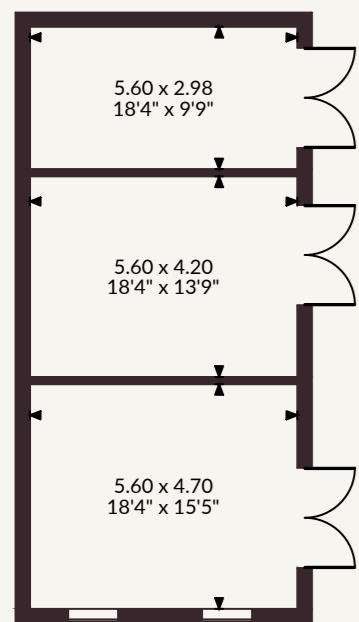
Ground Floor



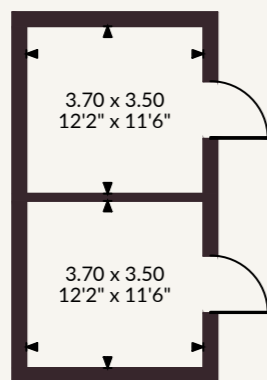
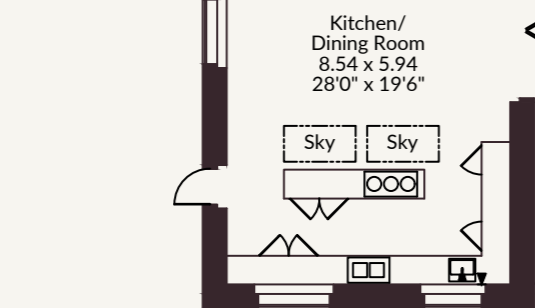
First Floor



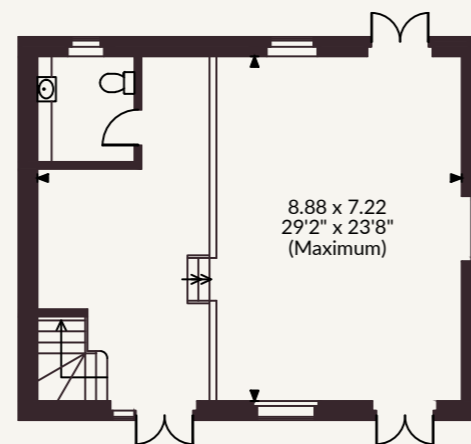
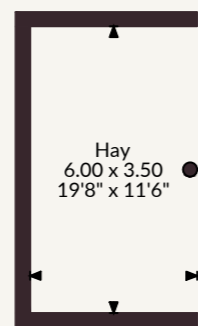
Second Floor



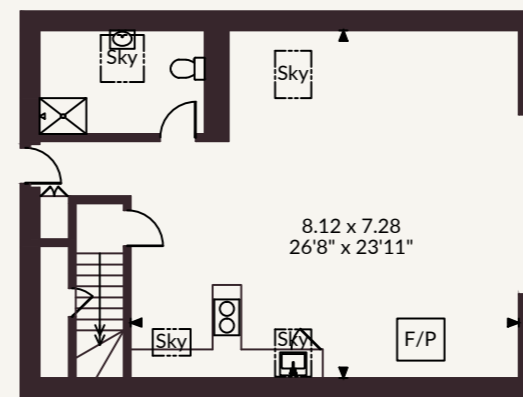
Store



Field Shelter



Annexe Ground Floor



Annexe First Floor



Strutt & Parker Exeter

24 Southernhay West, Exeter, EX1 1PR
01392 215631 | exeter@struttandparker.com

The position & size of doors, windows, appliances and other features are approximate only.

☐☐☐ Denotes restricted head height

© ehous. Unauthorised reproduction prohibited. Drawing ref. dig/8686463/DBN

@struttandparker struttandparker.com

IMPORTANT NOTICE: Strutt & Parker gives notice that: 1. These particulars do not constitute an offer or contract or part thereof. 2. All descriptions, photographs and plans are for guidance only and should not be relied upon as statements or representations of fact. All measurements are approximate and not necessarily to scale. Any prospective purchaser must satisfy themselves of the correctness of the information within the particulars by inspection or otherwise. 3. Strutt & Parker does not have any authority to give any representations or warranties whatsoever in relation to this property (including but not limited to planning/building regulations), nor can it enter into any contract on behalf of the Vendor. 4. Strutt & Parker does not accept responsibility for any expenses incurred by prospective purchasers in inspecting properties which have been sold, let or withdrawn. 5. We are able to refer you to SPF Private Clients Limited ("SPF") for mortgage broking services, and to Alexander James Interiors ("AJI"), an interior design service. Should you decide to use the services of SPF, we will receive a referral fee from them of 25% of the aggregate of the fee paid to them by you for the arrangement of a mortgage and any fee received by them from the product provider. Should you decide to use the services of AJI, we will receive a referral fee of 10% of the net income received by AJI for the services they provide to you. 6. If there is anything of particular importance to you, please contact this office and Strutt & Parker will try to have the information checked for you. Strutt & Parker is a trading style of BNP Paribas Real Estate Advisory & Property Management UK Limited. Photographs taken April 2026. Particulars prepared April 2026.



Strutt
& Parker

Land and property. Since 1885.