



Donovan Court, Chelsea, SW10

For the finer things in property.

**STRUTT  
& PARKER**

BNP PARIBAS GROUP

# Donovan Court, Chelsea, SW10

A super one bedroom flat found on the fifth floor (with lift) of a portered mansion block in Chelsea

1 Bedroom | 1 Bathroom | Lift | Concierge  
Upper floor | EPC Rating D

Found on Drayton Gardens, Donovan Court is right next to the best section of Fulham Road, this large one bedroom flat enjoys stunning fifth floor views across Chelsea from every window. Benefiting from a lift and a porter.

Always very popular for those seeking a very conveniently located first home, pied a terre or rental investment within 'The Beach' area in the heart of Chelsea, is this well presented one bedroom apartment set on the fifth floor (with lift) of a well-maintained mansion block with porter, enjoying South, Eastern and Westerly views from each window.

This property has a long lease, great space and is ready for immediate occupation. This is a perfect example of the well-proportioned flats found in this ever popular art deco mansion block on Drayton Gardens in the heart of Chelsea.

Situated directly opposite Chelsea's main cinema and right on 'The Beach' part of Fulham Road, the most popular location for restaurants, bars and clubs in SW10. Donovan Court is also within striking distance of either Gloucester Road or South Kensington tube stations.

## Chelsea SW10

140 Fulham Road, London, SW10 9PY

**020 7373 1010**

chelseaSW10@struttandparker.com



### Terms

**Tenure:** Leasehold, 85 years and 10 months remaining

**Service Charge:** £2,534.55 pa

**Ground Rent:** £100 pa

**Council Tax:** Band E

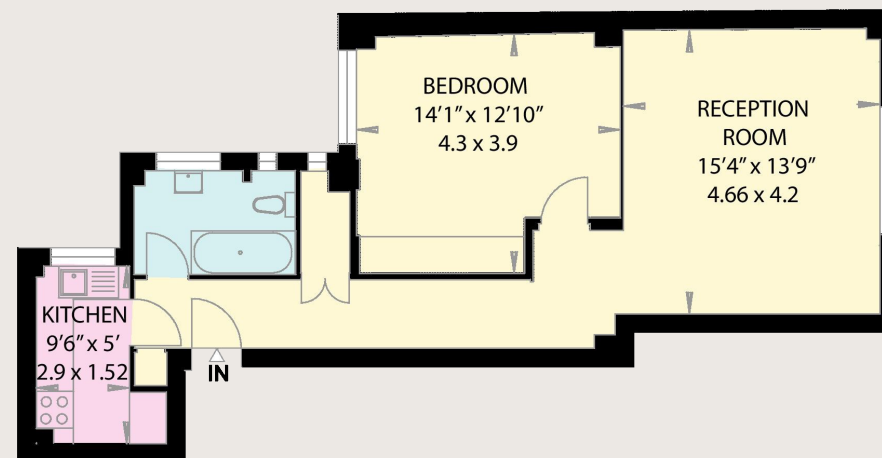
**Local Authority:** The London Borough of Hammersmith and Fulham

**Asking Price:** £770,000

### IMPORTANT NOTICE

Strutt & Parker gives notice that: 1. These particulars do not constitute an offer or contract or part thereof. 2. All descriptions, photographs and plans are for guidance only and should not be relied upon as statements or representations of fact. All measurements are approximate and not necessarily to scale. Any prospective purchaser must satisfy themselves of the correctness of the information within the particulars by inspection or otherwise. 3. Strutt & Parker does not have any authority to give any representations or warranties whatsoever in relation to this property (including but not limited to planning/building regulations), nor can it enter into any contract on behalf of the Vendor. 4. Strutt & Parker does not accept responsibility for any expenses incurred by prospective purchasers in inspecting properties which have been sold, let or withdrawn. 5. We are able to refer you to SPF Private Clients Limited ("SPF") for mortgage broking services, and to Alexander James Interiors ("AJI"), an interior design service. Should you decide to use the services of SPF, we will receive a referral fee from them of 25% of the aggregate of the fee paid to them by you for the arrangement of a mortgage and any fee received by them from the product provider. Should you decide to use the services of AJI, we will receive a referral fee of 10% of the net income received by AJI for the services they provide to you. 6. If there is anything of particular importance to you, please contact this office and Strutt & Parker will try to have the information checked for you. Photographs taken June 2024. Particulars prepared June 2024 Strutt & Parker is a trading style of BNP Paribas Real Estate Advisory & Property Management UK Limited.

Gross Internal Area 615 sq ft (57.1 sq m)  
For identification purposes only.



Fifth Floor



Over 50 offices across England and Scotland,  
including Prime Central London

For the finer things in property.

