

Drayton Gardens

Chelsea, SW10



An exceptional and beautifully finished three-bedroom flat.

A beautifully refurbished, three-bedroom flat, situated on the fourth floor (with lift) in one of the most desirable mansion blocks on Drayton Gardens. The property benefits from high ceilings and a bright South-Westerly aspect.



1 RECEPTION ROOM



3 BEDROOMS



2 BATHROOMS



1,295 SQ FT



**PRICE
£1,660 PW**



The property

A beautifully refurbished, three-bedroom flat, situated on the fourth floor (with lift), on Drayton Gardens. The property benefits from high ceilings and a bright South-Westerly aspect.

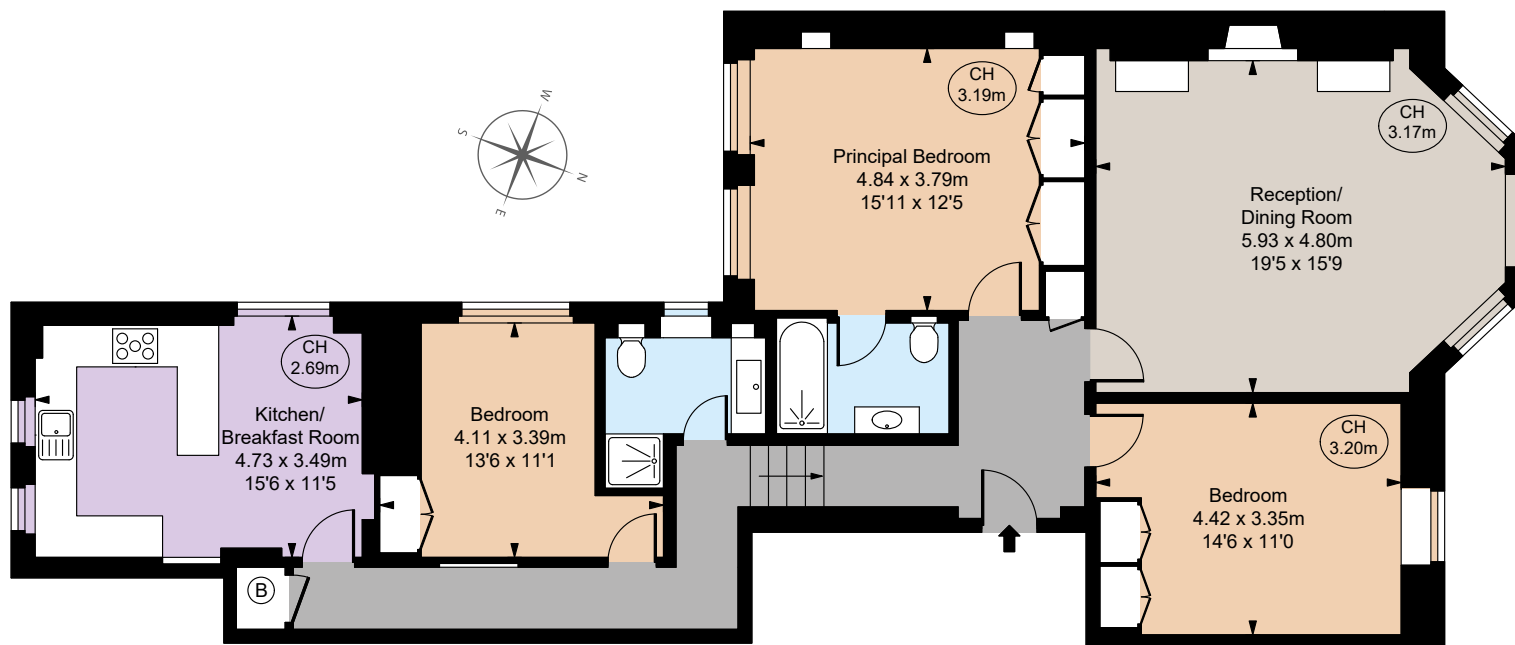
Located within a sought after mansion block on Drayton Gardens, with a charming entry and frontage, enjoying a grass lawn and stunning flower beds, set back from the road behind original cast iron gates and fencing.

Location

The Fulham Road is located at the end of Drayton Gardens with its fabulous amenities, bars, restaurants and transport facilities, along with Gloucester Road underground station just north of Old Brompton Road.







Floorplans

Gross internal area 1,295 sq ft (120.28 sq m)

For identification purposes only.

General

Price: £1,660 pw *plus charges

Local Authority: The Royal Borough of Kensington and Chelsea

Council Tax: Band G

EPC Rating: D

Parking: Residents' parking

Broadband: Installed

Furnishings: Furnished

*The following Tenant Charges may apply prior to tenancy commencement: Tenancy Agreement £354 (inc VAT), Credit References per application £70 (inc VAT). All advertised prices are exclusive of utility and other associated services; struttandparker.com/tenantcharges.

IMPORTANT NOTICE: Strutt & Parker gives notice that: 1. These particulars do not constitute an offer or contract or part thereof. 2. All descriptions, photographs and plans are for guidance only and should not be relied upon as statements or representations of fact. All measurements are approximate and not necessarily to scale. Any prospective purchaser must satisfy themselves of the correctness of the information within the particulars by inspection or otherwise. 3. Strutt & Parker does not have any authority to give any representations or warranties whatsoever in relation to this property (including but not limited to planning/building regulations), nor can it enter into any contract on behalf of the Vendor. 4. Strutt & Parker does not accept responsibility for any expenses incurred by prospective purchasers in inspecting properties which have been sold, let or withdrawn. 5. We are able to refer you to SPF Private Clients Limited ("SPF") for mortgage broking services, and to Alexander James Interiors ("AJI"), an interior design service. Should you decide to use the services of SPF, we will receive a referral fee from them of 25% of the aggregate of the fee paid to them by you for the arrangement of a mortgage and any fee received by them from the product provider. Should you decide to use the services of AJI, we will receive a referral fee of 10% of the net income received by AJI for the services they provide to you. 6. If there is anything of particular importance to you, please contact this office and Strutt & Parker will try to have the information checked for you. Photographs taken February 2025. Particulars prepared February 2025. Strutt & Parker is a trading style of BNP Paribas Real Estate Advisory & Property Management UK Limited

Chelsea SW10

140 Fulham Road, London, SW10 9PY

020 7373 1010

chelseaSW10@struttandparker.com
struttandparker.com



@struttandparker

Over 50 offices across England and Scotland,
including Prime Central London

For the finer things in property.

