

Drayton Court Chelsea



**Strutt
& Parker**

Land and property. Since 1885.





A stunning, newly refurbished flat with lift access in this well-regarded mansion block

Description

A bright and elegant four-bedroom lateral flat set within the prestigious and popular Drayton Court, positioned on Drayton Gardens, a premier address in Chelsea.

This newly refurbished lateral flat is situated on the second floor of a prestigious mansion block and measures circa 1,874 sq ft / 174.1 sq ft. It has been refurbished in an elegant style and is presented in excellent condition throughout.

The entrance hall leads into a generous reception room with high ceilings and plenty of light. As well as separate dining and seating areas, this room features a pair of double French doors opening onto a balcony overlooking Drayton Gardens. The kitchen is situated next door with modern units, marble worktops and a central island, perfect for everyday use.

There are three very well-proportioned double bedrooms and one single bedroom which can be used as an additional study. The principal bedroom features a spacious en suite bathroom with both bath and shower. The second bathroom also benefits from an en suite bathroom and further features a French door opening onto a second balcony. The third family bathroom and convenient utility cupboard with washing machine and dryer complete the layout.

This is an exceptionally bright flat, with wooden floors and windows on three sides resulting in light-filled interiors. Furthermore, the flat benefits from electric underfloor heating throughout and air-conditioning in the reception room and bedrooms.

Drayton Gardens is a highly desirable location and sought-after residential address, positioned within close proximity to the Fulham Road. The property is offered to the market chain-free and with a share of freehold.



1,874 sq ft / 174.1 sq m
 Second floor with lift
 Well-proportioned lateral flat
 Four bedrooms | Three bathrooms
 Double reception | Separate kitchen
 Balcony | Air conditioning
 Underfloor heating | Share of freehold

Guide price £3,695,000





Location

Drayton Gardens is a well-regarded address which sits on the South Kensington and Chelsea borders, and is situated between Old Brompton Road and the Fulham Road. Neighbouring roads include The Boltons, Tregunter Road and Gilston Road which puts it in an ideal position within this revered pocket of Chelsea SW10.

Terms

Tenure: Share of freehold, 948 years and 7 months remaining

Service charge: £5,938 per annum

Local Authority: Royal Borough of Kensington & Chelsea

Council Tax: Band G

Parking: Residents' permit

Broadband: Available

EPC: C

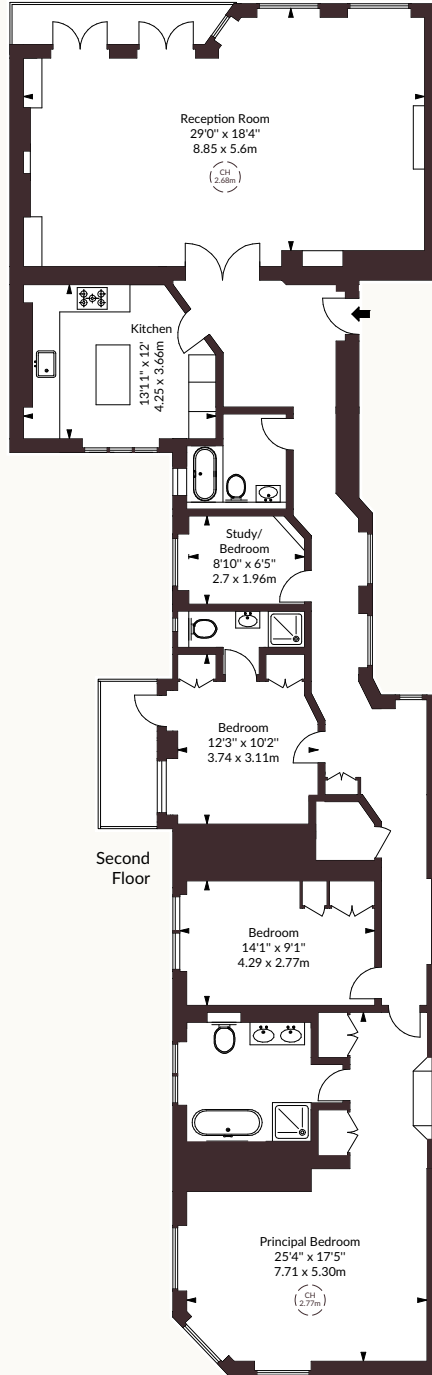
Asking Price: £3,695,000





Approximate Gross
Internal Area
1,874 sq ft / 174.1 sq m

CH: Ceiling height
Floorplan for guidance only, not to scale or for valuations purposes. It must not be relied upon as a statement of fact. All measurements and areas are approximate and have been prepared in accordance with the current edition of the RICS Code of Measuring Practice.
© Alex Winship Photography Ltd.



Strutt & Parker SW10

140 Fulham Road, London SW10 9PY

+44 (0)20 7373 1010 chelseasw10@struttandparker.com



@struttandparker

struttandparker.com

IMPORTANT NOTICE: Strutt & Parker gives notice that: 1. These particulars do not constitute an offer or contract or part thereof. 2. All descriptions, photographs and plans are for guidance only and should not be relied upon as statements or representations of fact. All measurements are approximate and not necessarily to scale. Any prospective purchaser must satisfy themselves of the correctness of the information within the particulars by inspection or otherwise. 3. Strutt & Parker does not have any authority to give any representations or warranties whatsoever in relation to this property (including but not limited to planning/building regulations), nor can it enter into any contract on behalf of the Vendor. 4. Strutt & Parker does not accept responsibility for any expenses incurred by prospective purchasers in inspecting properties which have been sold, let or withdrawn. 5. We are able to refer you to SPF Private Clients Limited ("SPF") for mortgage broking services, and to Alexander James Interiors ("AJI"), an interior design service. Should you decide to use the services of SPF, we will receive a referral fee from them of 25% of the aggregate of the fee paid to them by you for the arrangement of a mortgage and any fee received by them from the product provider. Should you decide to use the services of AJI, we will receive a referral fee of 10% of the net income received by AJI for the services they provide to you. 6. If there is anything of particular importance to you, please contact this office and Strutt & Parker will try to have the information checked for you. Strutt & Parker is a trading style of BNP Paribas Real Estate Advisory & Property Management UK Limited. Photographs taken April 2026. Particulars prepared April 2026. 14/04/26 S&P-260402-06-B-GG

THE BROCHURE

Available to buy through

Strutt & Parker

Land and property. Since 1885.