



Drayton Gardens, Chelsea, SW10

For the finer things in property.

**STRUTT  
& PARKER**

BNP PARIBAS GROUP 



# Drayton Gardens, Chelsea, SW10

A wonderful and spacious second floor studio flat with a large balcony in Chelsea.

Studio flat | Reception | Kitchen | Bathroom  
Large balcony | Share of Freehold | EPC Rating G

A very bright and spacious studio flat in a very attractive period building in Drayton Gardens. The flat benefits from pretty windows that allow plenty of natural light to come through as well as direct access to a large balcony with a beautiful view. The property is set on the second floor and comprises a spacious studio reception room with a separate well designed kitchen and a separate bathroom.

It would make a great pied-a-terre or first time purchase.

Drayton Gardens is a well-regarded address which sits on the South Kensington and Chelsea borders, and is situated between Old Brompton Road and the Fulham Road. Neighbouring roads include The Boltons, Tregunter Road and Gilston Road which puts it in an ideal position within this revered pocket of Chelsea SW10.

## Terms

**Tenure:** Share of Freehold

**Service Charge:** £3,209

**Council Tax:** Band G

**Local Authority:** The Royal Borough of Kensington and Chelsea

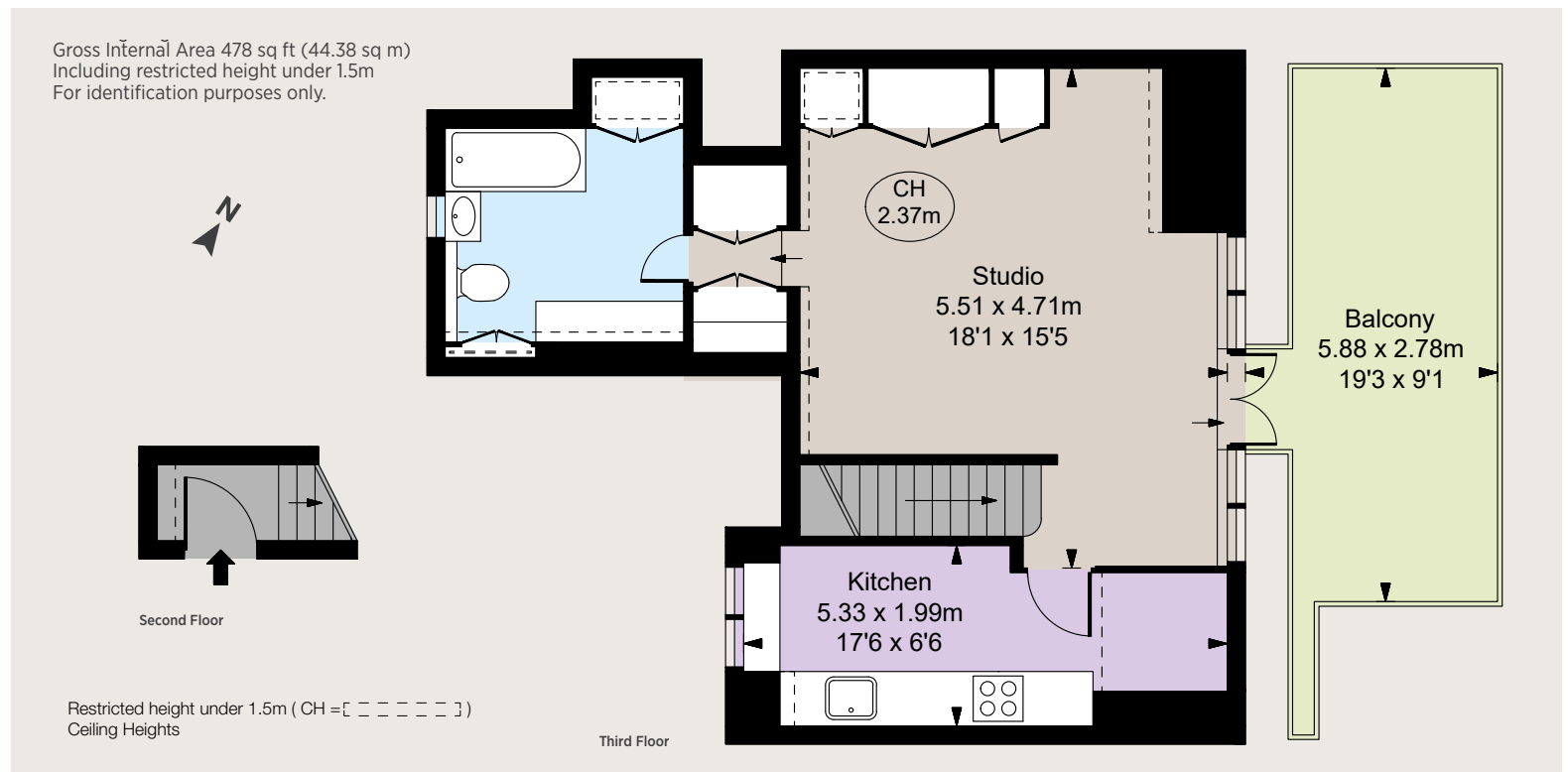
**Asking Price:** £550,000

## Chelsea SW10

140 Fulham Road, London, SW10 9PY

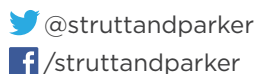
**020 7373 1010**

chelseaSW10@struttandparker.com



### IMPORTANT NOTICE

Strutt & Parker gives notice that: 1. These particulars do not constitute an offer or contract or part thereof. 2. All descriptions, photographs and plans are for guidance only and should not be relied upon as statements or representations of fact. All measurements are approximate and not necessarily to scale. Any prospective purchaser must satisfy themselves of the correctness of the information within the particulars by inspection or otherwise. 3. Strutt & Parker does not have any authority to give any representations or warranties whatsoever in relation to this property (including but not limited to planning/building regulations), nor can it enter into any contract on behalf of the Vendor. 4. Strutt & Parker does not accept responsibility for any expenses incurred by prospective purchasers in inspecting properties which have been sold, let or withdrawn. 5. We are able to refer you to SPF Private Clients Limited ("SPF") for mortgage broking services, and to Alexander James Interiors ("AJI"), an interior design service. Should you decide to use the services of SPF, we will receive a referral fee from them of 25% of the aggregate of the fee paid to them by you for the arrangement of a mortgage and any fee received by them from the product provider. Should you decide to use the services of AJI, we will receive a referral fee of 10% of the net income received by AJI for the services they provide to you. 6. If there is anything of particular importance to you, please contact this office and Strutt & Parker will try to have the information checked for you. Photographs taken October 2023. Particulars prepared October 2023 Strutt & Parker is a trading style of BNP Paribas Real Estate Advisory & Property Management UK Limited.



Over 45 offices across England and Scotland,  
including Prime Central London

For the finer things in property.

