



Earls Court Road

KENSINGTON W8



A seven-bedroom family house, with off-street parking, pool, gym, media room and beautiful garden

An outstanding seven-bedroom family house, occupying approximately 4,775 sq ft, with off-street parking and a 16-meter swimming pool, which has been meticulously designed and beautifully refurbished. The property has fantastic views down Scarsdale Villas and also overlooks Pembroke Square to the front of the house.

Accommodation

This property offers seven bedrooms and six bathrooms (four en-suite) with fabulous entertaining space over four of its floors, which includes; a double reception room on the ground floor, a large kitchen/dining room on the lower ground floor leading onto a landscape garden, plus a staff bedroom and bathroom.

There are a further two floors which include; a media room, wine cellar for 600 bottles, two guest bedrooms both with en-suite shower rooms, and separate gym and shower/changing facilities.

Location

Earls Court Road is a delightful and particularly sought-after address close to local amenities including Gloucester Road and South Kensington with a vast array of restaurants, bars and shopping. Easy transport links including Earls Court tube station for District, Piccadilly, and Circle lines, with an additional benefit of easy access to the M4.

Specification

- Air-conditioned gym
- Under-floor heating throughout
- Control 4 in-house AV system
- Security cameras back and front


7


6


2


1

EPC
C



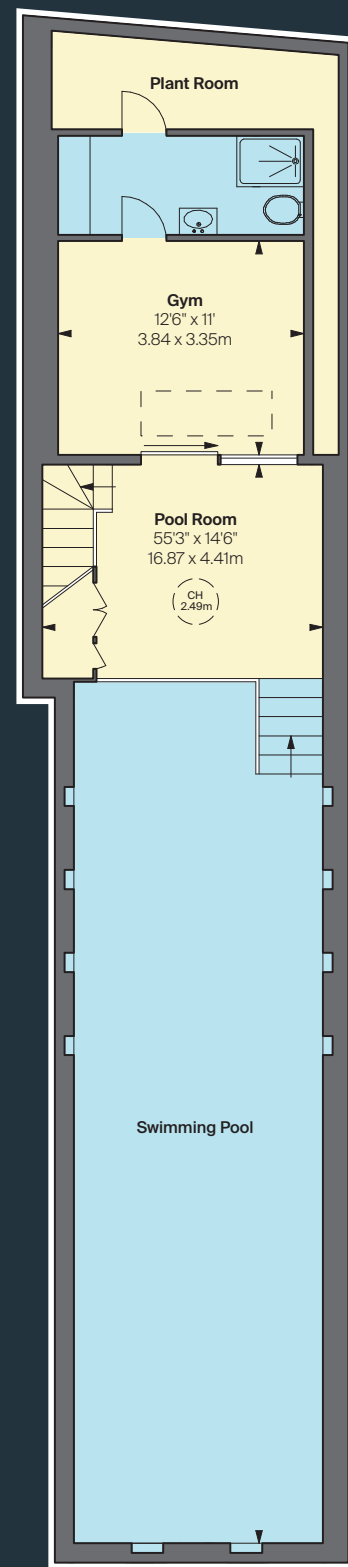




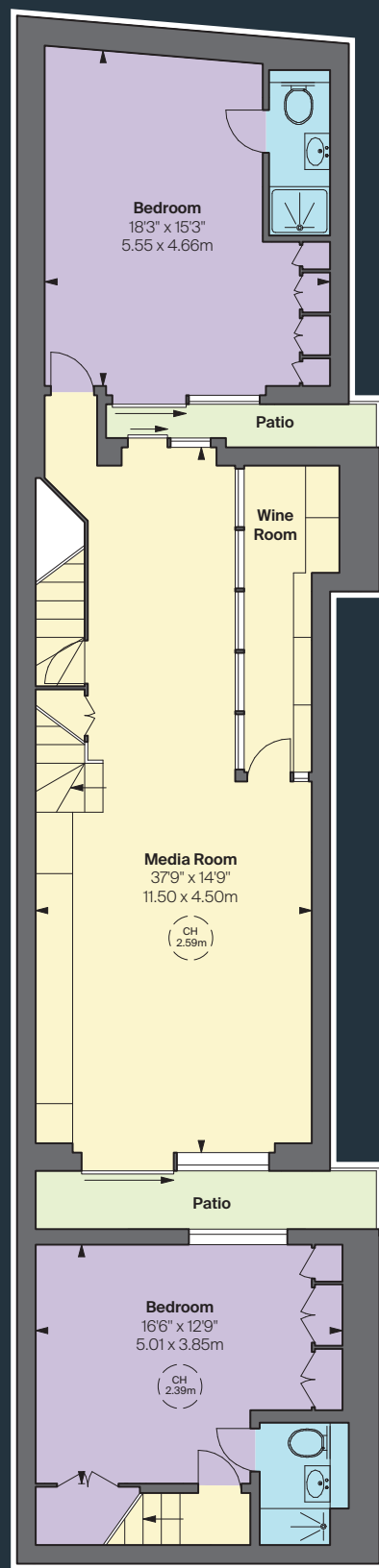




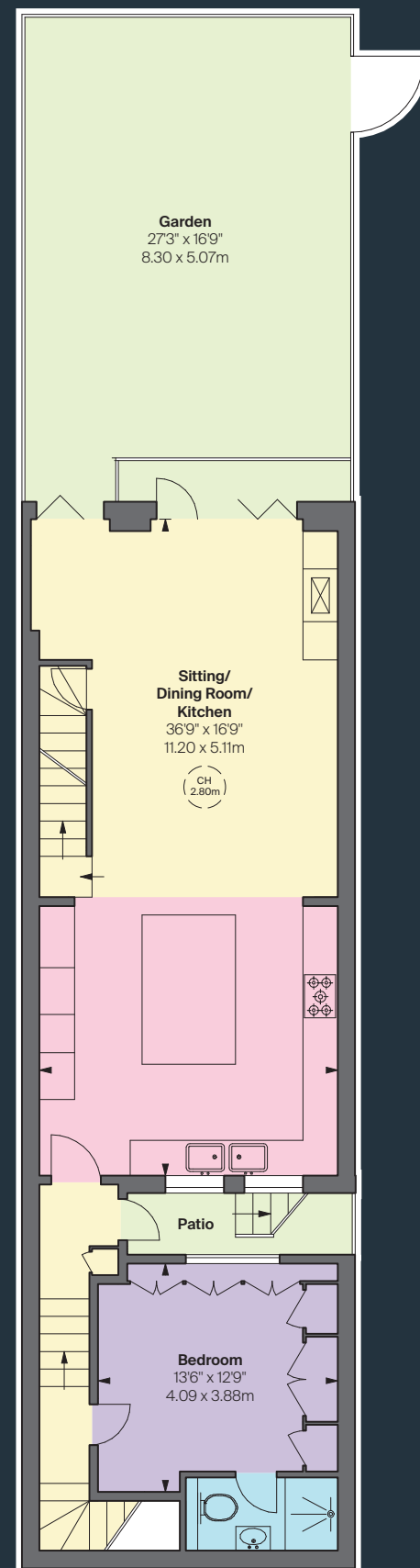




Sub Basement



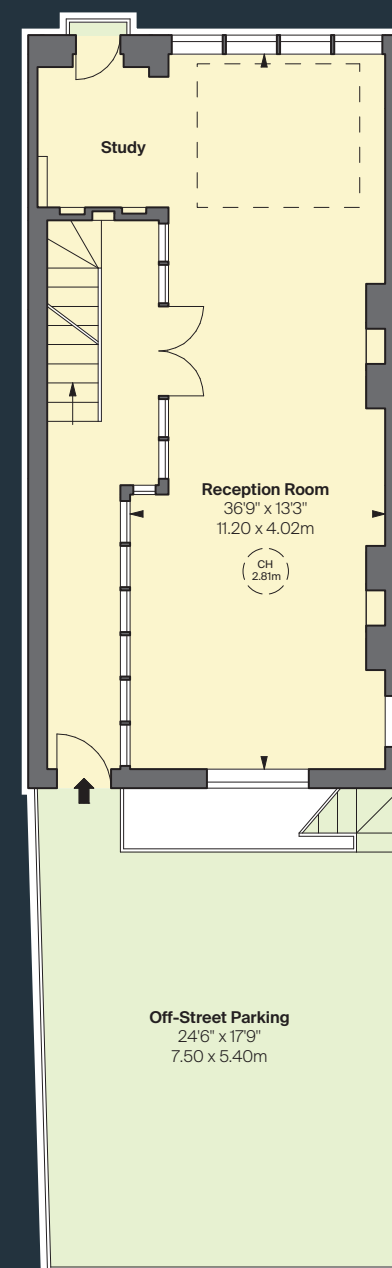
Basement



Lower Ground Floor

Approximate Gross
Internal Area
4,775 sq ft
443.60 sq m

This plan is for guidance only
and must not be relied upon as a
statement of fact. Attention is drawn
to the important notice on the last
page of the text of the Particulars.



Raised Ground Floor

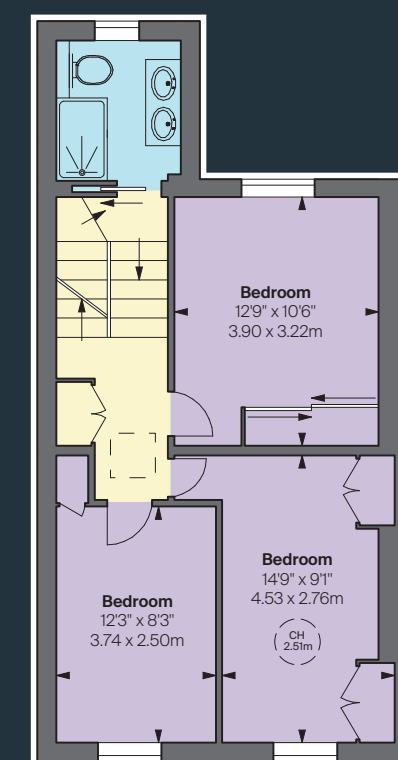
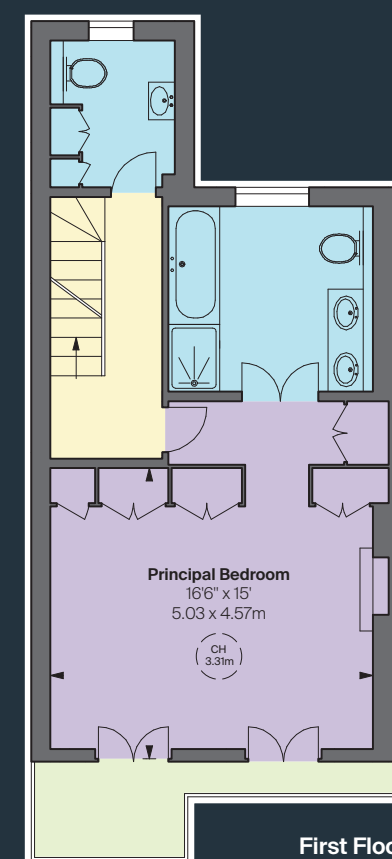
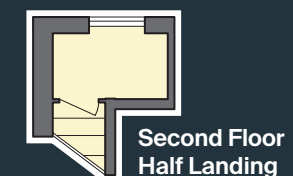
Tenure
Freehold

Guide Price
Offers in
excess of
£6,000,000

EPC
Rating C

Council Tax
Band H

Local Authority
The Royal Borough of
Kensington and Chelsea



Second Floor

CH = Ceiling height
Floorplan for guidance only, not to scale or for valuations
purposes. It must not be relied upon as a statement of
fact. All measurements and areas are approximate and
have been prepared in accordance with the current
edition of the RICS Code of Measuring Practice
© Alex Winship Photography





Knight Frank
Kensington
52-56 Kensington Church Street
London
W8 4DB

Will Allen
will.allen@knightfrank.com
07929 771 130

Charles Olver
charles.olver@knightfrank.com
07717 430 275

knightfrank.co.uk



Strutt & Parker
Kensington
103 Kensington Church Street
London
W8 7LN

James Gow
james.gow@struttandparker.com
07811 195 930

Rosie Campbell
rosie.campbell@struttandparker.com
07881 257 194

struttandparker.com



Fixtures and fittings: A list of the fitted carpets, curtains, light fittings and other items fixed to the property which are included in the sale (or may be available by separate negotiation) will be provided by the Seller's Solicitors.

Important Notice: 1. Particulars: These particulars are not an offer or contract, nor part of one. You should not rely on statements by Knight Frank LLP in the particulars or by word of mouth or in writing ("information") as being factually accurate about the property, its condition or its value. Neither Knight Frank LLP nor any joint agent has any authority to make any representations about the property, and accordingly any information given is entirely without responsibility on the part of the agents, seller(s) or lessor(s). 2. Photos, Videos etc: The photographs, property videos and virtual viewings etc. show only certain parts of the property as they appeared at the time they were taken. Areas, measurements and distances given are approximate only. 3. Regulations etc: Any reference to alterations to, or use of, any part of the property does not mean that any necessary planning, building regulations or other consent has been obtained. A buyer or lessee must find out by inspection or in other ways that these matters have been properly dealt with and that all information is correct. 4. VAT: The VAT position relating to the property may change without notice. 5. To find out how we process Personal Data, please refer to our Group Privacy Statement and other notices at <https://www.knightfrank.com/legals/privacy-statement>.

Particulars dated September 2024. Photographs and videos dated September 2024.

All information is correct at the time of going to print. Knight Frank is the trading name of Knight Frank LLP. Knight Frank LLP is a limited liability partnership registered in England and Wales with registered number OC305934. Our registered office is at 55 Baker Street, London W1U 8AN. We use the term 'partner' to refer to a member of Knight Frank LLP, or an employee or consultant. A list of members names of Knight Frank LLP may be inspected at our registered office. If you do not want us to contact you further about our services then please contact us by either calling 020 3544 0692, email to marketing.help@knightfrank.com or post to our UK Residential Marketing Manager at our registered office (above) providing your name and address.

06/30/25 KF-240925C-10-JF



BNP PARIBAS GROUP 