



Earl's Court Square, SW5

Earl's Court Square, SW5

Exquisite penthouse apartment spanning the top two floors of a period building on Earl's Court Square.

Two bedrooms | One reception room | Two bathrooms | Roof terrace | Lift | EPC C | Council tax G

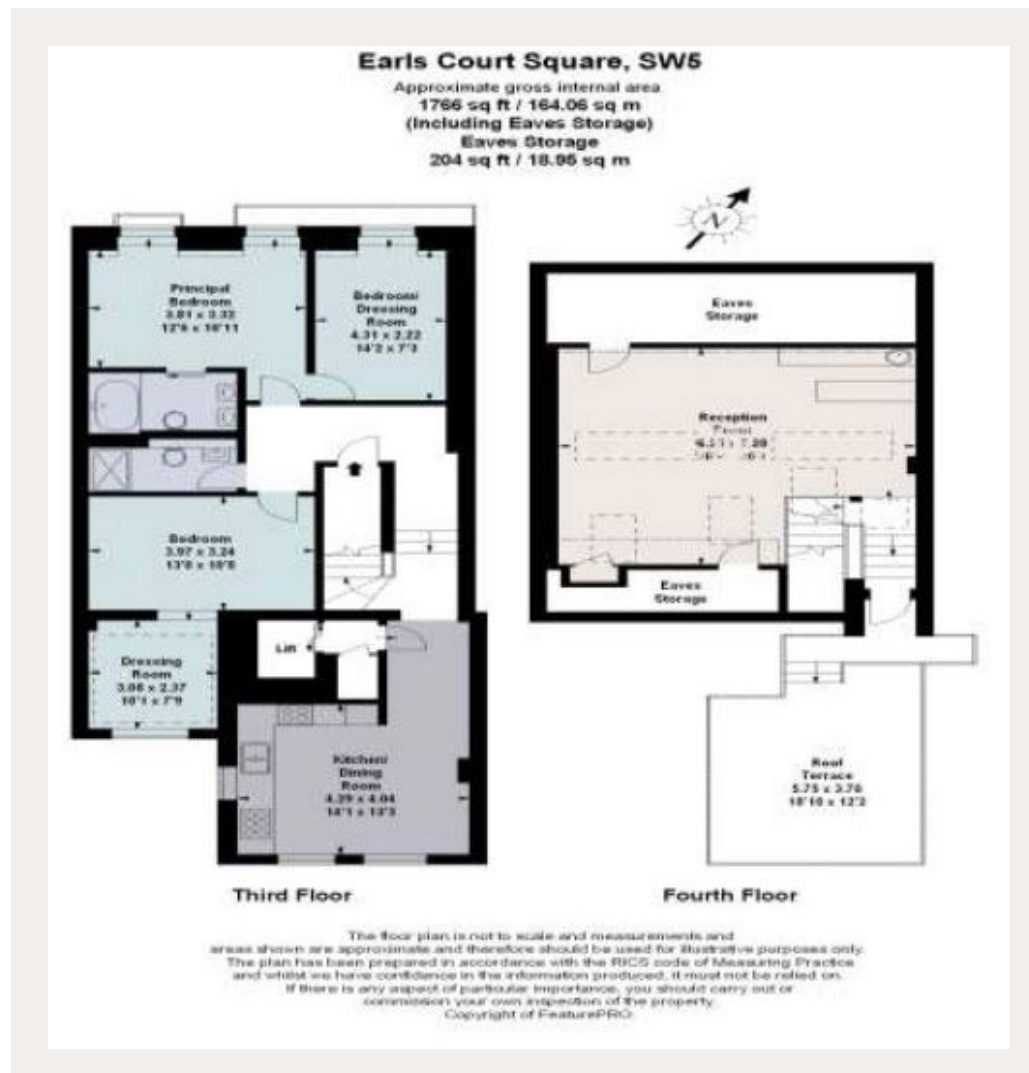
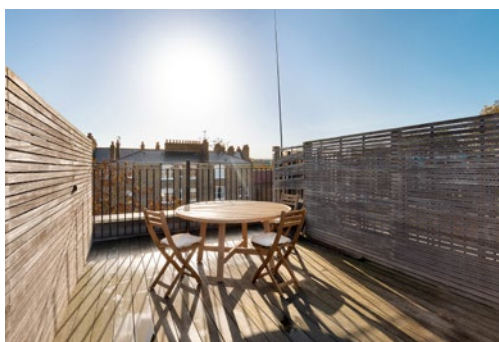
The property benefits from direct lift access, two spacious bedrooms both complete with expansive dressing rooms and two impeccably designed bathrooms. The kitchen is sleekly designed and furnished with a large breakfast/dining table. The spacious reception room is well equipped for entertaining featuring a built in bar, and access to a private terrace. This unique property is conveniently connected to Earl's Court Station and local amenities.

Terms

Local Authority: The Royal Borough of Kensington and Chelsea

Guide Price: £2,000 per week *plus charges

*Charges: The following charges may apply
– Preparation of a Non Housing Act Tenancy Agreement £354 (Inc VAT) and Credit Reference per applicant £70 (Inc VAT)



South Kensington

90 Old Brompton Road, London, SW7 3LQ

020 7581 7000

southken@struttandparker.com

IMPORTANT NOTICE: Strutt & Parker gives notice that: 1. These particulars do not constitute an offer or contract or part thereof. 2. All descriptions, photographs and plans are for guidance only and should not be relied upon as statements or representations of fact. All measurements are approximate and not necessarily to scale. Any prospective purchaser must satisfy themselves of the correctness of the information within the particulars by inspection or otherwise. 3. Strutt & Parker does not have any authority to give any representations or warranties whatsoever in relation to this property (including but not limited to planning/building regulations), nor can it enter into any contract on behalf of the Vendor. 4. Strutt & Parker does not accept responsibility for any expenses incurred by prospective purchasers in inspecting properties which have been sold, let or withdrawn. 5. We are able to refer you to SPF Private Clients Limited ("SPF") for mortgage broking services, and to Alexander James Interiors ("AJI"), an interior design service. Should you decide to use the services of SPF, we will receive a referral fee from them of 25% of the aggregate of the fee paid to them by you for the arrangement of a mortgage and any fee received by them from the product provider. Should you decide to use the services of AJI, we will receive a referral fee of 10% of the net income received by AJI for the services they provide to you. 6. If there is anything of particular importance to you, please contact this office and Strutt & Parker will try to have the information checked for you. Photographs taken January 2024. Particulars prepared January 2024. Strutt & Parker is a trading style of BNP Paribas Real Estate Advisory & Property Management UK Limited.