



Eaton Place, London SW1X

Eaton Place Belgravia SW1X

A cleverly arranged 2-bedroom, 2-bathroom lateral, penthouse apartment situated in a grand stucco fronted building in close proximity to Sloane Square.

Reception room | Breakfast area | Kitchen | Two bedrooms | Bathroom | Shower room | EPC rating E

The apartment features clean, neutral decor and high quality fittings throughout. There is a spacious 24ft reception room, while to the side, a breakfast area provides space for a dining table. The kitchen is fitted with an integrated double oven and gas hob, as well as space for all of the necessary appliances. There are two comfortable double bedrooms, while the principal bedroom has an en-suite bathroom.



Terms:

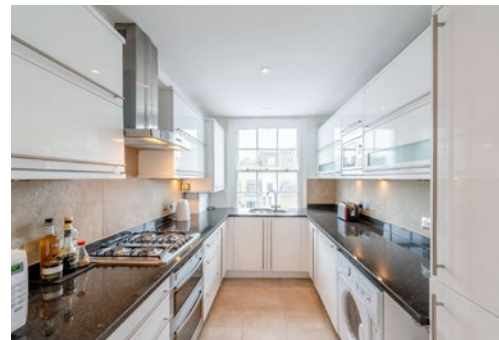
Tenure: Leasehold expiring 19/09/2143

Service Charge: Circa £3,216 per annum

Council Tax Band: G

Local Authority: City of Westminster

Price: £1,695,000

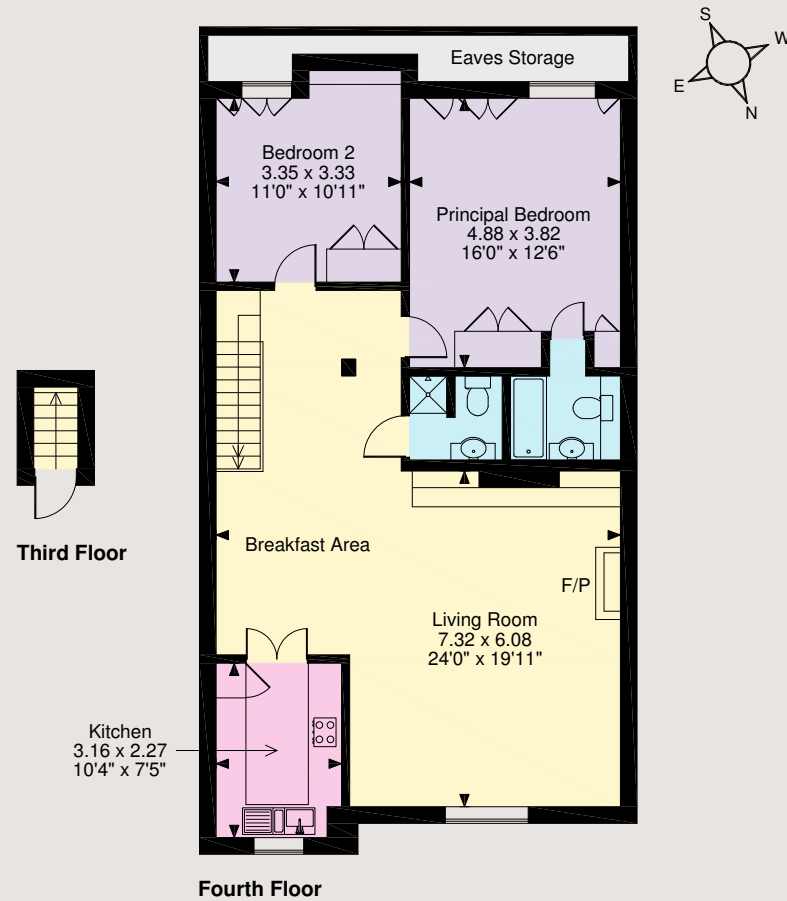






Eaton Place is a highly sought after address in Belgravia located just behind Eaton Square. The flat is located at the favoured Western end 0.3 miles from Sloane Square underground station (Circle and District line) which provides access to the city. The amenities and shops of both Knightsbridge and the King's Road are also within close proximity.

Flat internal area 1,042 sq.ft. (97m.sq)



The position & size of doors, windows, appliances and other features are approximate only.
© ehouse. Unauthorised reproduction prohibited. Drawing ref. dig/8453341/KKM

Sloane Street

66 Sloane Street, London SW1X 9SH

020 7235 9959

sloanestreet@struttandparker.com

IMPORTANT NOTICE: Strutt & Parker gives notice that: 1. These particulars do not constitute an offer or contract or part thereof. 2. All descriptions, photographs and plans are for guidance only and should not be relied upon as statements or representations of fact. All measurements are approximate and not necessarily to scale. Any prospective purchaser must satisfy themselves of the correctness of the information within the particulars by inspection or otherwise. 3. Strutt & Parker does not have any authority to give any representations or warranties whatsoever in relation to this property (including but not limited to planning/building regulations), nor can it enter into any contract on behalf of the Vendor. 4. Strutt & Parker does not accept responsibility for any expenses incurred by prospective purchasers in inspecting properties which have been sold, let or withdrawn. 5. We are able to refer you to SPF Private Clients Limited ("SPF") for mortgage broking services, and to Alexander James Interiors ("AJI"), an interior design service. Should you decide to use the services of SPF, we will receive a referral fee from them of 25% of the aggregate of the fee paid to them by you for the arrangement of a mortgage and any fee received by them from the product provider. Should you decide to use the services of AJI, we will receive a referral fee of 10% of the net income received by AJI for the services they provide to you. 6. If there is anything of particular importance to you, please contact this office and Strutt & Parker will try to have the information checked for you. Photographs taken March 2023. Particulars prepared March 2023. Strutt & Parker is a trading style of BNP Paribas Real Estate Advisory & Property Management UK Limited.