

Elgin Crescent, Notting Hill



Strutt
& Parker

Land and property. Since 1885.

A charming family house with a wonderful private garden and access to communal gardens

Laid out over four floors, this is a superb, terraced house with a substantial 16m, south-east facing garden and direct access to the beautiful, communal gardens of Montpelier Gardens.

The house has excellent entertaining space on the lower two floors with a formal drawing room on the raised ground floor which has french doors onto a lovely terrace overlooking the communal gardens, and a largely open plan kitchen and sitting room on the lower ground floor with sliding doors onto the private rear garden.

The upper two floors, currently configured with four bedrooms and two bathrooms, require cosmetic refurbishment providing the potential for an incoming purchaser to reconfigure the layout and to apply their own interior design and finish to the house.



Location

Elgin Crescent is an extremely popular Notting Hill address in the Ladbroke Conservation Area and, this house is one of a terrace which offer unusually large private gardens. The house is close to all the transport links, shops, boutiques and restaurants of Westbourne Grove, Portobello Road and Holland Park Avenue. The underground stations of Notting Hill Gate, Ladbroke Grove and Holland Park Avenue (District, Circle, Central and Hammersmith & City lines) are nearby, along with a selection of excellent schools including Pembridge Hall, Wetherby, Southbank International, Chepstow House and Notting Hill Prep.

Postcode region: W11

General

Local Authority: Royal Borough of Kensington and Chelsea
Council Tax: Band G
EPC Rating: C
Parking: RBKC permit parking
Mobile coverage and broadband: Information can be found here: <https://checker.ofcom.org.uk/en-gb/mobile-coverage>

1,852 sq ft (172.05 sq m)

Four bedrooms

Two reception rooms

16m, south-east facing garden

Communal garden access

Freehold

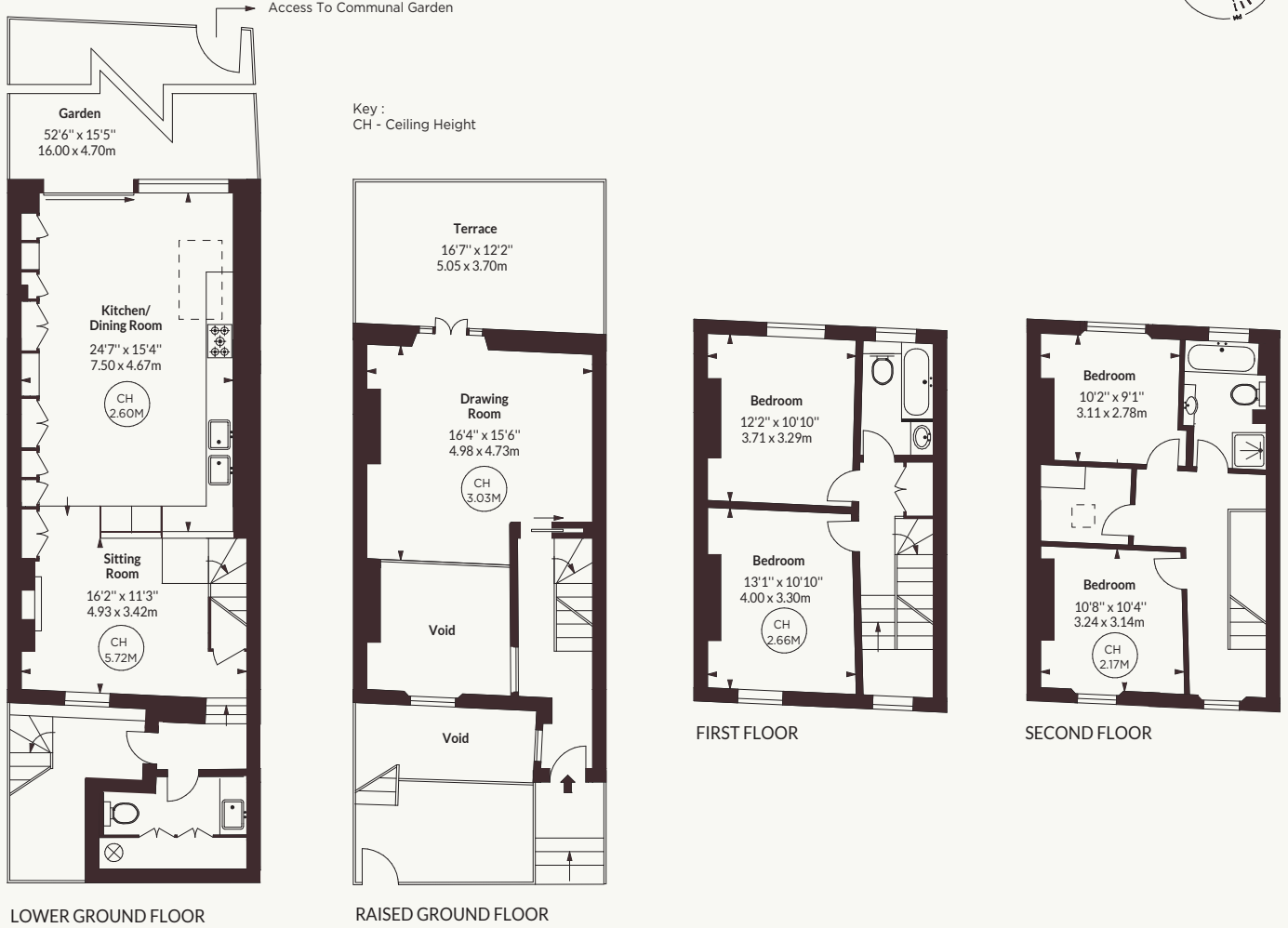
Guide price £5,000,000



Elgin Crescent, W11

APPROX. GROSS INTERNAL AREA *
1852 Sq Ft - 172.05 Sq M
(EXCLUDING VOID)

This floorplan is for GUIDANCE ONLY and NOT FOR VALUATION purposes.



Strutt & Parker Notting Hill

303 Westbourne Grove, London, W11 2QA
020 7221 1111 | nottinghill@struttandparker.com



@struttandparker

struttandparker.com

Strutt
& Parker

Land and property. Since 1885.

IMPORTANT NOTICE: Strutt & Parker gives notice that: 1. These particulars do not constitute an offer or contract or part thereof. 2. All descriptions, photographs and plans are for guidance only and should not be relied upon as statements or representations of fact. All measurements are approximate and not necessarily to scale. Any prospective purchaser must satisfy themselves of the correctness of the information within the particulars by inspection or otherwise. 3. Strutt & Parker does not have any authority to give any representations or warranties whatsoever in relation to this property (including but not limited to planning/building regulations), nor can it enter into any contract on behalf of the Vendor. 4. Strutt & Parker does not accept responsibility for any expenses incurred by prospective purchasers in inspecting properties which have been sold, let or withdrawn. 5. We are able to refer you to SPF Private Clients Limited ("SPF") for mortgage broking services, and to Alexander James Interiors ("AJI"), an interior design service. Should you decide to use the services of SPF, we will receive a referral fee from them of 25% of the aggregate of the fee paid to them by you for the arrangement of a mortgage and any fee received by them from the product provider. Should you decide to use the services of AJI, we will receive a referral fee of 10% of the net income received by AJI for the services they provide to you. 6. If there is anything of particular importance to you, please contact this office and Strutt & Parker will try to have the information checked for you. Strutt & Parker is a trading style of BNP Paribas Real Estate Advisory & Property Management UK Limited. Photographs taken May 2026. Particulars prepared May 2026