

Elgin Mews

Notting Hill, W11



**STRUTT
& PARKER**

BNP PARIBAS GROUP

A stunning five-bedroom freehold house.

An immaculately presented freehold house, discreetly positioned within the heart of Notting Hill.



3 RECEPTION ROOMS



5 BEDROOMS



4 BATHROOMS



FREEHOLD



2,812 SQ FT



**GUIDE PRICE
£3,500,000**

The property

Architecturally designed, the house offers light-filled, well balanced living accommodation over five floors, including a sun-filled terrace.

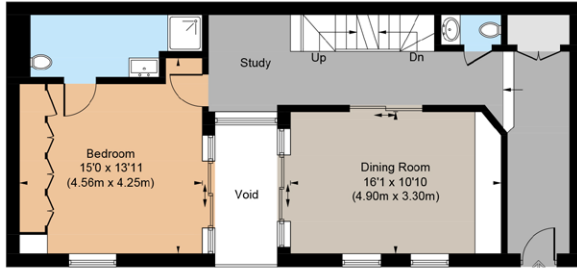
The house benefits from a formal reception room, plus a separate state of the art media room / family room. The five well-proportioned bedrooms are all equipped with built-in wardrobes. The house also includes Air-Conditioning throughout.

Location

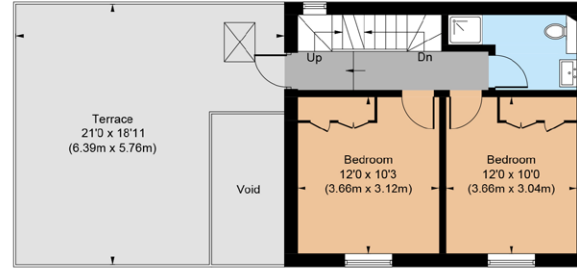
Positioned within proximity of the excellent shopping and transport facilities of Westbourne Grove and Kensington Park Road, the property is also within striking distance of the transport facilities of Ladbroke Grove, Holland Park and Notting Hill Gate Underground stations (Hammersmith & City, Circle and Central Lines).



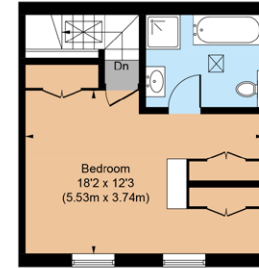




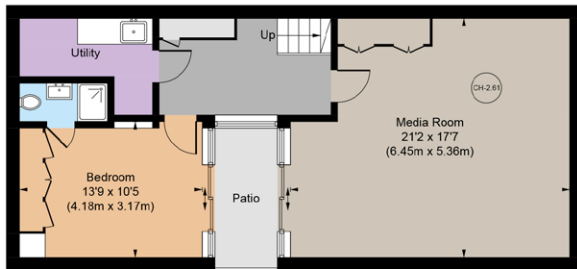
Ground Floor



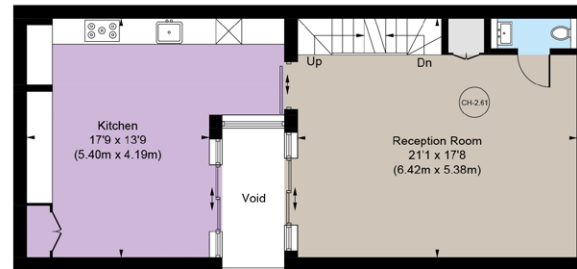
First Floor



Second Floor



Basement



Lower Ground Floor



Floorplans

Gross internal area 2,812 sq ft (261.3 sq m)
For identification purposes only.

General

Tenure: Freehold

Local Authority: The Royal Borough of Kensington and Chelsea

Council Tax: Band H

EPC Rating: C

Parking: Residential parking

Broadband: Available

IMPORTANT NOTICE: Strutt & Parker gives notice that: 1. These particulars do not constitute an offer or contract or part thereof. 2. All descriptions, photographs and plans are for guidance only and should not be relied upon as statements or representations of fact. All measurements are approximate and not necessarily to scale. Any prospective purchaser must satisfy themselves of the correctness of the information within the particulars by inspection or otherwise. 3. Strutt & Parker does not have any authority to give any representations or warranties whatsoever in relation to this property (including but not limited to planning/building regulations), nor can it enter into any contract on behalf of the Vendor. 4. Strutt & Parker does not accept responsibility for any expenses incurred by prospective purchasers in inspecting properties which have been sold, let or withdrawn. 5. We are able to refer you to SPF Private Clients Limited ("SPF") for mortgage broking services, and to Alexander James Interiors ("AJI"), an interior design service. Should you decide to use the services of SPF, we will receive a referral fee from them of 25% of the aggregate of the fee paid to them by you for the arrangement of a mortgage and any fee received by them from the product provider. Should you decide to use the services of AJI, we will receive a referral fee of 10% of the net income received by AJI for the services they provide to you. 6. If there is anything of particular importance to you, please contact this office and Strutt & Parker will try to have the information checked for you. Photographs taken April 2025. Particulars prepared April 2025. Strutt & Parker is a trading style of BNP Paribas Real Estate Advisory & Property Management UK Limited

Notting Hill

303 Westbourne Grove, London, W11 2QA

020 7221 1111

nottinghill@struttandparker.com

struttandparker.com



@struttandparker

Over 50 offices across England and Scotland,
including Prime Central London

For the finer things in property.

