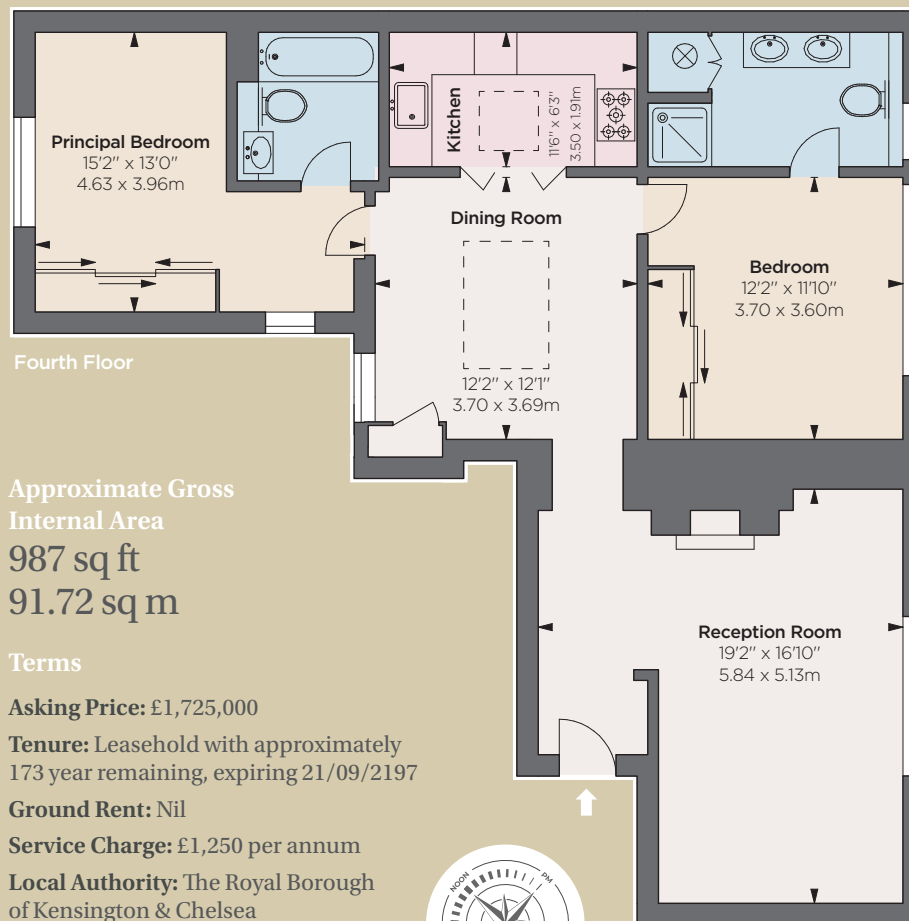




Elm Park Gardens

CHELSEA SW10



Approximate Gross Internal Area
987 sq ft
91.72 sq m

Terms

Asking Price: £1,725,000

Tenure: Leasehold with approximately 173 year remaining, expiring 21/09/2197

Ground Rent: Nil

Service Charge: £1,250 per annum

Local Authority: The Royal Borough of Kensington & Chelsea

Council Tax: Band G

EPC: Rating D



A striking top floor apartment with far-reaching garden views

The design cuts an elegant generous two bedroom flat with a separate kitchen, dining room and reception.

This welcoming home is presented in immaculate condition and, accompanied by the skylights, is flooded with natural light.

Elm Park Gardens benefits from portorage, a fabulous communal garden and a location sitting between the King's Road and the Fulham Road with all the wonderful amenities this area has to offer.

Accommodation

- Entrance hall
- Reception room
- Dining room
- Kitchen
- Two en-suite bedrooms
- Lift
- Porter
- Access to communal gardens

Chelsea SW10

140 Fulham Road, London SW10 9PY

+44 (0)20 7373 1010

chelseasw10@struttandparker.com
struttandparker.com

[@struttandparker](https://twitter.com/struttandparker)

[f /struttandparker](https://facebook.com/struttandparker)

Over 45 offices across England and Scotland, including Prime Central London

IMPORTANT NOTICE: Strutt & Parker gives notice that: 1. These particulars do not constitute an offer or contract or part thereof. 2. All descriptions, photographs and plans are for guidance only and should not be relied upon as statements or representations of fact. All measurements are approximate and not necessarily to scale. Any prospective purchaser must satisfy themselves of the correctness of the information within the particulars by inspection or otherwise. 3. Strutt & Parker does not have any authority to give any representations or warranties whatsoever in relation to this property (including but not limited to planning/building regulations), nor can it enter into any contract on behalf of the Vendor. 4. Strutt & Parker does not accept responsibility for any expenses incurred by prospective purchasers in inspecting properties which have been sold, let or withdrawn. 5. We are able to refer you to SPF Private Clients Limited ("SPF") for mortgage broking services, and to Alexander James Interiors ("AJI"), an interior design service. Should you decide to use the services of SPF, we will receive a referral fee from them of 25% of the aggregate of the fee paid to them by you for the arrangement of a mortgage and any fee received by them from the product provider. Should you decide to use the services of AJI, we will receive a referral fee of 10% of the net income received by AJI for the services they provide to you. 6. If there is anything of particular importance to you, please contact this office and Strutt & Parker will try to have the information checked for you. **Photographs taken October 2019. Particulars prepared March 2024.** Strutt & Parker is a trading style of BNP Paribas Real Estate Advisory & Property Management UK Limited. 06/03/24S&P-240305-02-GG