



Elm Park Gardens, Chelsea W10

Elm Park Gardens, Chelsea SW10

£690 p/w *plus charges

With direct access to communal gardens, is this very attractive, contemporary apartment on the second floor of this imposing Victorian conversion with two bedrooms, two bathrooms including a steam room.

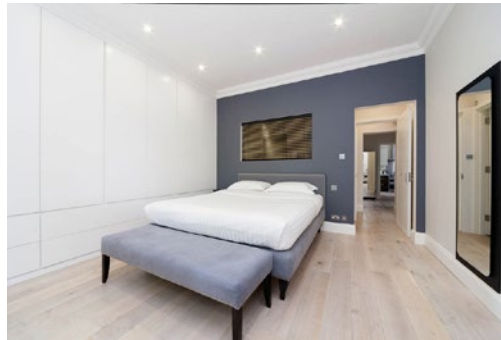
Upon entering the flat on the second floor, there is a west facing reception room open plan to the modern kitchen. The principal bedroom, overlooks the communal gardens, with ensuite bathroom, a range of built in wardrobes, and space for a home office or dressing area. There is a second double bedroom with built in storage; and second shower room, which has a steam room. The property also benefits from a separate utility cupboard and double glazed windows throughout. The EPC Rating is C.

Elm Park Gardens is on the corner of Fulham Road, and is in the heart of the trendy bars, restaurant, and shops along Fulham Road with easy access to the main bus routes and walking distance to both Gloucester Road and South Kensington tube stations.

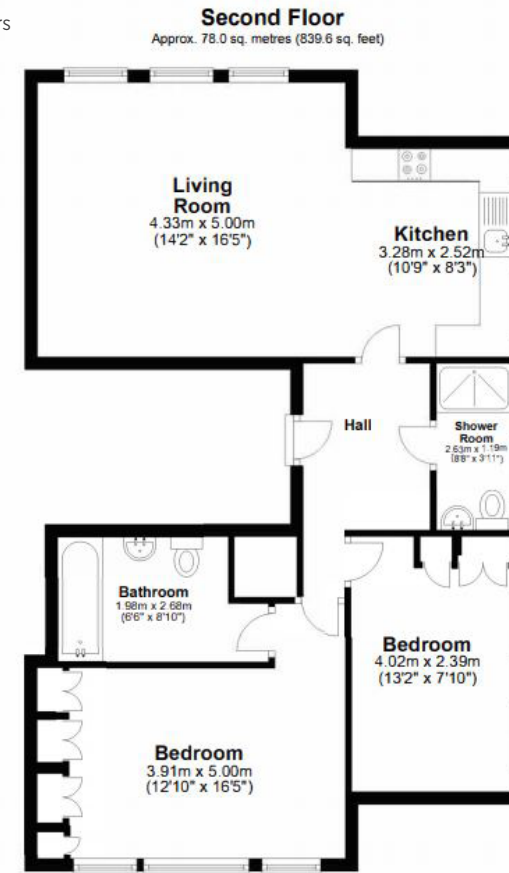
Terms

Available: Furnished

The following Tenant charges may apply prior to tenancy commencement: Tenancy Agreement £180 (incl VAT), Credit Reference per application £36 (incl VAT). All advertised prices are exclusive of utility and other associated services www.struttandparker.com/tenantcharges



Floorplan
Approximately 78 sq meters
(839.6 sq feet)
Measurements are
approximate, not to scale.
For illustrative
purposes only.



Measurements are approximate. Not to Scale. Illustrative purposes only.
Plan produced using PlanUp.

Flat 4
1 Elm Park Gardens

IMPORTANT NOTICE: Strutt & Parker gives notice that: 1. These particulars do not constitute an offer or contract or part thereof. 2. All descriptions, photographs and plans are for guidance only and should not be relied upon as statements or representations of fact. All measurements are approximate and not necessarily to scale. Any prospective purchaser must satisfy themselves of the correctness of the information within the particulars by inspection or otherwise. 3. Strutt & Parker does not have any authority to give any representations or warranties whatsoever in relation to this property (including but not limited to planning/building regulations), nor can it enter into any contract on behalf of the Vendor. 4. Strutt & Parker does not accept responsibility for any expenses incurred by prospective purchasers in inspecting properties which have been sold, let or withdrawn. 5. We are able to refer you to SPF Private Clients Limited ("SPF") for mortgage broking services, and to Alexander James Interiors ("AJI"), an interior design service. Should you decide to use the services of SPF, we will receive a referral fee from them of 25% of the aggregate of the fee paid to them by you for the arrangement of a mortgage and any fee received by them from the product provider. Should you decide to use the services of AJI, we will receive a referral fee of 10% of the net income received by AJI for the services they provide to you. 6. If there is anything of particular importance to you, please contact this office and Strutt & Parker will try to have the information checked for you. Photographs taken June 2021. Particulars prepared June 2021. Strutt & Parker is a trading style of BNP Paribas Real Estate Advisory & Property Management UK Limited.