

Elm Park Gardens,
Chelsea



Strutt
& Parker

Land and property. Since 1885.

An elegant and exceptionally bright three-bedroom lateral apartment.

Extending to approximately 1,128 sq ft, this beautifully presented apartment offers well-proportioned accommodation throughout, with an abundance of natural light enhancing the sense of space.

The property comprises a generous reception room, separate kitchen, principal bedroom with en suite bathroom, two further bedrooms and a family bathroom.

Presented in excellent decorative order, the apartment offers immediate turnkey appeal in one of Chelsea's most desirable addresses.



Location

Elm Park Gardens enjoys a prime position between the Fulham Road and King's Road, placing an excellent selection of local amenities, transport links and green spaces within striking distance.

Postcode region: SW10

General

Tenure: Leasehold, 169 years 11 months
Local Authority: Royal Borough of Kensington and Chelsea
Council Tax: Band G
EPC Rating: C
Service Charge: £4,000 per annum
Ground Rent: £10 per annum
Parking: Residents' permit
Mobile coverage and broadband: Information can be found here: <https://checker.ofcom.org.uk/en-gb/mobile-coverage>

1,125 sq ft (104.5 sq m)

3 bedrooms

1 reception room

2 bathrooms

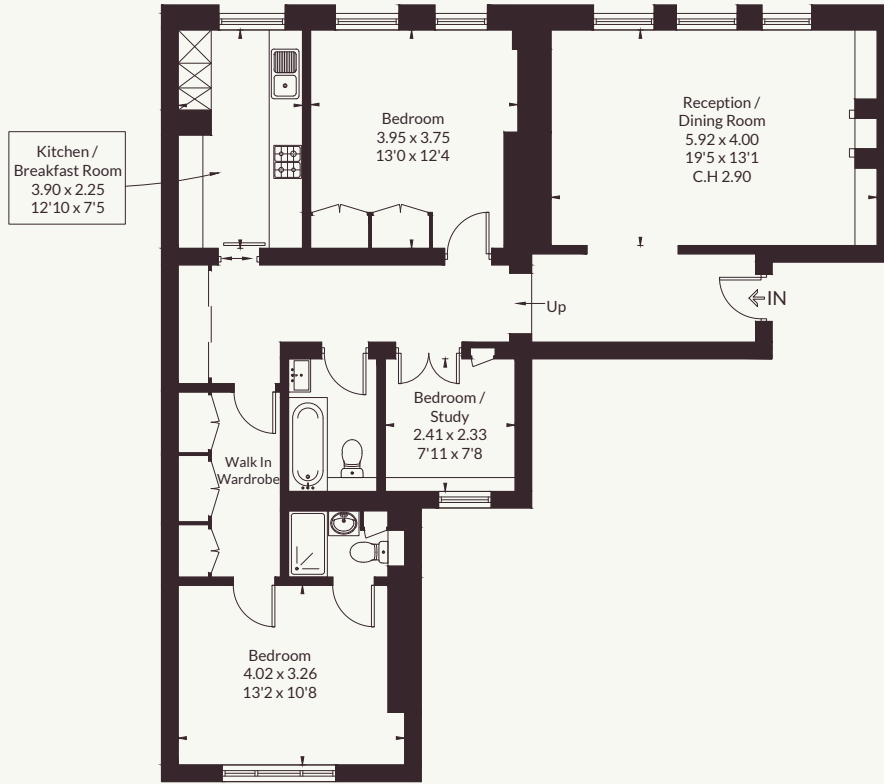
Flat

Leasehold

Guide price £1,750,000



Approximate Floor Area = 104.5 sq m / 1125 sq ft



Second Floor



This floor plan has been drawn in accordance with RICS Property Measurement 2nd edition.

All measurements, including the floor area, are approximate and for illustrative purposes only. @fourwalls-group.com #110290

Strutt & Parker Chelsea

140 Fulham Road, London, SW10 9PY

020 7373 1010 | chelseaSW10@struttandparker.com



@struttandparker

struttandparker.com

IMPORTANT NOTICE: Strutt & Parker gives notice that: 1. These particulars do not constitute an offer or contract or part thereof. 2. All descriptions, photographs and plans are for guidance only and should not be relied upon as statements or representations of fact. All measurements are approximate and not necessarily to scale. Any prospective purchaser must satisfy themselves of the correctness of the information within the particulars by inspection or otherwise. 3. Strutt & Parker does not have any authority to give any representations or warranties whatsoever in relation to this property (including but not limited to planning/building regulations), nor can it enter into any contract on behalf of the Vendor. 4. Strutt & Parker does not accept responsibility for any expenses incurred by prospective purchasers in inspecting properties which have been sold, let or withdrawn. 5. We are able to refer you to SPF Private Clients Limited ("SPF") for mortgage broking services, and to Alexander James Interiors ("AJI"), an interior design service. Should you decide to use the services of SPF, we will receive a referral fee from them of 25% of the aggregate of the fee paid to them by you for the arrangement of a mortgage and any fee received by them from the product provider. Should you decide to use the services of AJI, we will receive a referral fee of 10% of the net income received by AJI for the services they provide to you. 6. If there is anything of particular importance to you, please contact this office and Strutt & Parker will try to have the information checked for you. Strutt & Parker is a trading style of BNP Paribas Real Estate Advisory & Property Management UK Limited. Photographs taken June 2026. Particulars prepared June 2026.

Strutt & Parker

Land and property. Since 1885.