



Elvaston Mews, South Kensington, SW7

For the finer things in property.

**STRUTT  
& PARKER**

BNP PARIBAS GROUP



# Elvaston Mews, South Kensington, SW7

£3,150 p/w \*plus charges

A stylishly, refurbished mews house, creates a wonderful contemporary family home, with exceptional open plan reception space.

4 Bedrooms | 2 Reception rooms | 4 Bathrooms  
Roof terrace | Garage | EPC Rating C

A fabulous, contemporary mews house, occupying approximately 2,695 sqft, on this quiet cobbled street which has undergone complete renovation throughout. This cleverly designed property boasts extensive entertaining and family living space with a drawing room on the ground floor and second open-plan kitchen/reception room extending over a whole floor. There are four double bedrooms arranged over the first and second floors, two bathrooms (one of which is en suite to the principal) and a further en suite shower room. In addition the property boasts an integrated garage, guest cloakroom and comfort cooling.

The property is well situated for the wide range of excellent shops and restaurants in Knightsbridge, South Kensington and Kensington. Elvaston Mews lies only a short distance from Gloucester Road Underground station (Circle, District and Piccadilly lines) and offers excellent transport links to the City and Heathrow Airport.

**Terms**  
**Furnished**  
**Council Tax:** Band G

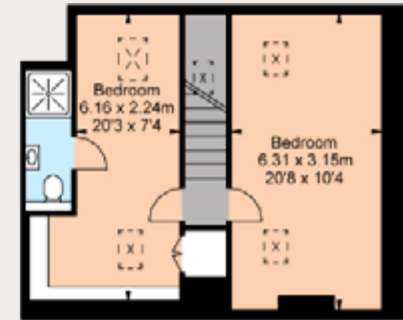
\*The following Tenant Charges may apply prior to tenancy commencement: Tenancy Agreement £354 (inc VAT), Credit References per application £70 (inc VAT). All advertised prices are exclusive of utility and other associated services [struttandparker.com/tenantcharges](http://struttandparker.com/tenantcharges).



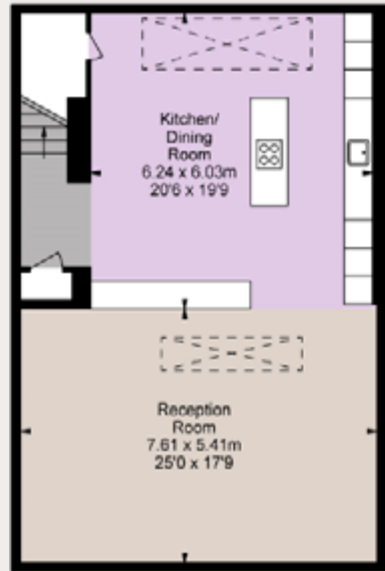




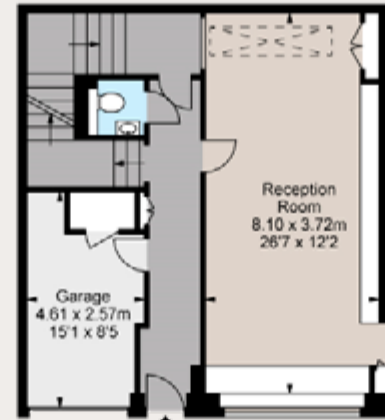
Gross Internal Area 2,695 sq ft (250.38 sq m)  
For identification purposes only.



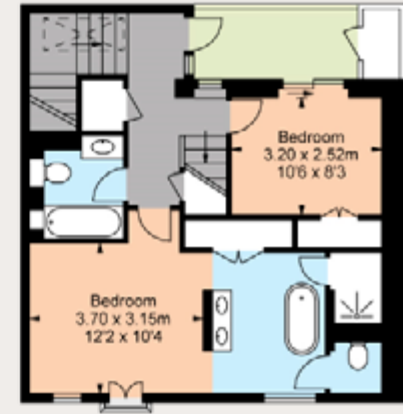
Second Floor



Lower Ground Floor



Ground Floor



First Floor

## South Kensington

90 Old Brompton Road, London, SW7 3LQ

**020 7581 7000**

southken@struttandparker.com

### IMPORTANT NOTICE

Strutt & Parker gives notice that: 1. These particulars do not constitute an offer or contract or part thereof. 2. All descriptions, photographs and plans are for guidance only and should not be relied upon as statements or representations of fact. All measurements are approximate and not necessarily to scale. Any prospective purchaser must satisfy themselves of the correctness of the information within the particulars by inspection or otherwise. 3. Strutt & Parker does not have any authority to give any representations or warranties whatsoever in relation to this property (including but not limited to planning/building regulations), nor can it enter into any contract on behalf of the Vendor. 4. Strutt & Parker does not accept responsibility for any expenses incurred by prospective purchasers in inspecting properties which have been sold, let or withdrawn. 5. We are able to refer you to SPF Private Clients Limited ("SPF") for mortgage broking services, and to Alexander James Interiors ("AJI"), an interior design service. Should you decide to use the services of SPF, we will receive a referral fee from them of 25% of the aggregate of the fee paid to them by you for the arrangement of a mortgage and any fee received by them from the product provider. Should you decide to use the services of AJI, we will receive a referral fee of 10% of the net income received by AJI for the services they provide to you. 6. If there is anything of particular importance to you, please contact this office and Strutt & Parker will try to have the information checked for you. Photographs taken October 2024. Particulars prepared October 2024. Strutt & Parker is a trading style of BNP Paribas Real Estate Advisory & Property Management UK Limited.



Over 50 offices across England and Scotland,  
including Prime Central London

**For the finer things in property.**

**STRUTT  
& PARKER**

BNP PARIBAS GROUP