



Chelwood House, Chelsea SW3

Chelwood House

Embankment Gardens, Chelsea, SW3

Held on its 22-year lease, a charming, raised ground floor lateral apartment, offering elegant living and access to communal gardens in Old Chelsea.

Reception room | Kitchen | Dining area
Principal bedroom | 2nd Bedroom | 2 Bathrooms
High ceilings | Communal gardens
EPC Rating D

Entered at raised ground floor level this exceptional property benefits from wonderfully high ceilings and grand proportions throughout and with large windows on all sides; there is no shortage of natural light. The main reception room, facing south with views towards the Thames, is a lovely calm space and the large kitchen/dining room looks over the pretty communal gardens, the private gardens of Providence House and on toward the Royal Hospital.

Chelwood House is located on Embankment Gardens, a popular Chelsea address, situated to the south of The King's Road and in close proximity to Battersea Park, The Chelsea Physic Gardens and the open green spaces of the Royal Hospital.

The nearest underground station, Sloane Square (Circle and District Line) is 0.8 miles away and the river taxi from Cadogan Pier into the City is also conveniently nearby.

Terms

Tenure: Leasehold expiring 23/09/2046 thus circa 22 years remaining

Local Authority: Royal Borough of Kensington and Chelsea

Service Charge: £10,000 per annum

Council Tax: Band G

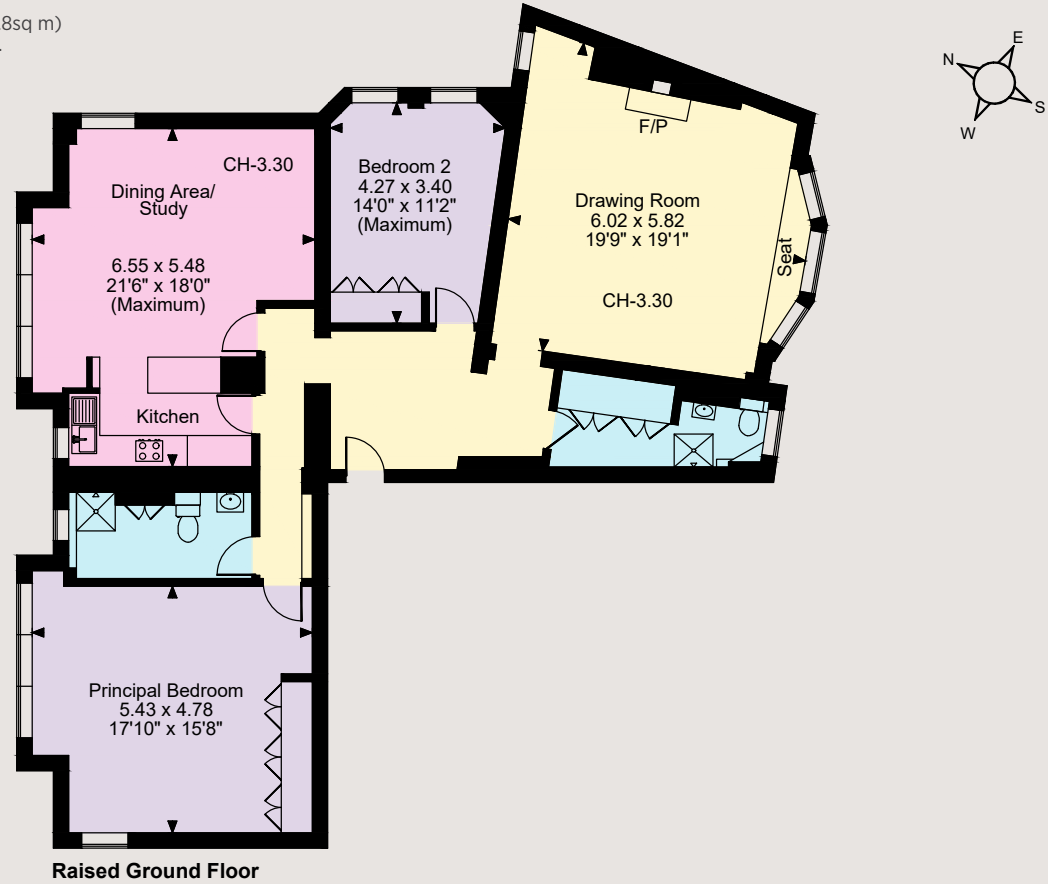
Asking Price: £1,650,000







Floorplans
Flat internal area 1,484sq ft (137.8sq m)
For identification purposes only.



The position & size of doors, windows, appliances and other features are approximate only.
© ehouse. Unauthorised reproduction prohibited. Drawing ref. dig/8583154/KKM

Knightsbridge & Belgravia

66 Sloane Street, London SW1X 9SH
020 7235 9959

knightsbridge@struttandparker.com

IMPORTANT NOTICE: Strutt & Parker gives notice that: 1. These particulars do not constitute an offer or contract or part thereof. 2. All descriptions, photographs and plans are for guidance only and should not be relied upon as statements or representations of fact. All measurements are approximate and not necessarily to scale. Any prospective purchaser must satisfy themselves of the correctness of the information within the particulars by inspection or otherwise. 3. Strutt & Parker does not have any authority to give any representations or warranties whatsoever in relation to this property (including but not limited to planning/building regulations), nor can it enter into any contract on behalf of the Vendor. 4. Strutt & Parker does not accept responsibility for any expenses incurred by prospective purchasers in inspecting properties which have been sold, let or withdrawn. 5. We are able to refer you to SPF Private Clients Limited ("SPF") for mortgage broking services, and to Alexander James Interiors ("AJI"), an interior design service. Should you decide to use the services of SPF, we will receive a referral fee from them of 25% of the aggregate of the fee paid to them by you for the arrangement of a mortgage and any fee received by them from the product provider. Should you decide to use the services of AJI, we will receive a referral fee of 10% of the net income received by AJI for the services they provide to you. 6. If there is anything of particular importance to you, please contact this office and Strutt & Parker will try to have the information checked for you. Photographs taken January 2024. Particulars prepared February 2024. Strutt & Parker is a trading style of BNP Paribas Real Estate Advisory & Property Management UK Limited.