



Ennismore Gardens
Knightsbridge, SW7

An immaculate lateral apartment on a prestigious private Knightsbridge garden square

Ennismore Gardens is a prestigious and private Knightsbridge garden square located south of Hyde Park.

The property is ideally situated for all the boutique shops, bars and restaurants that both Knightsbridge and South Kensington have to offer.



1 RECEPTION ROOM



2 BEDROOMS



2 BATHROOMS



LEASEHOLD



1,261 SQ FT



**ASKING PRICE:
£2,850,000**



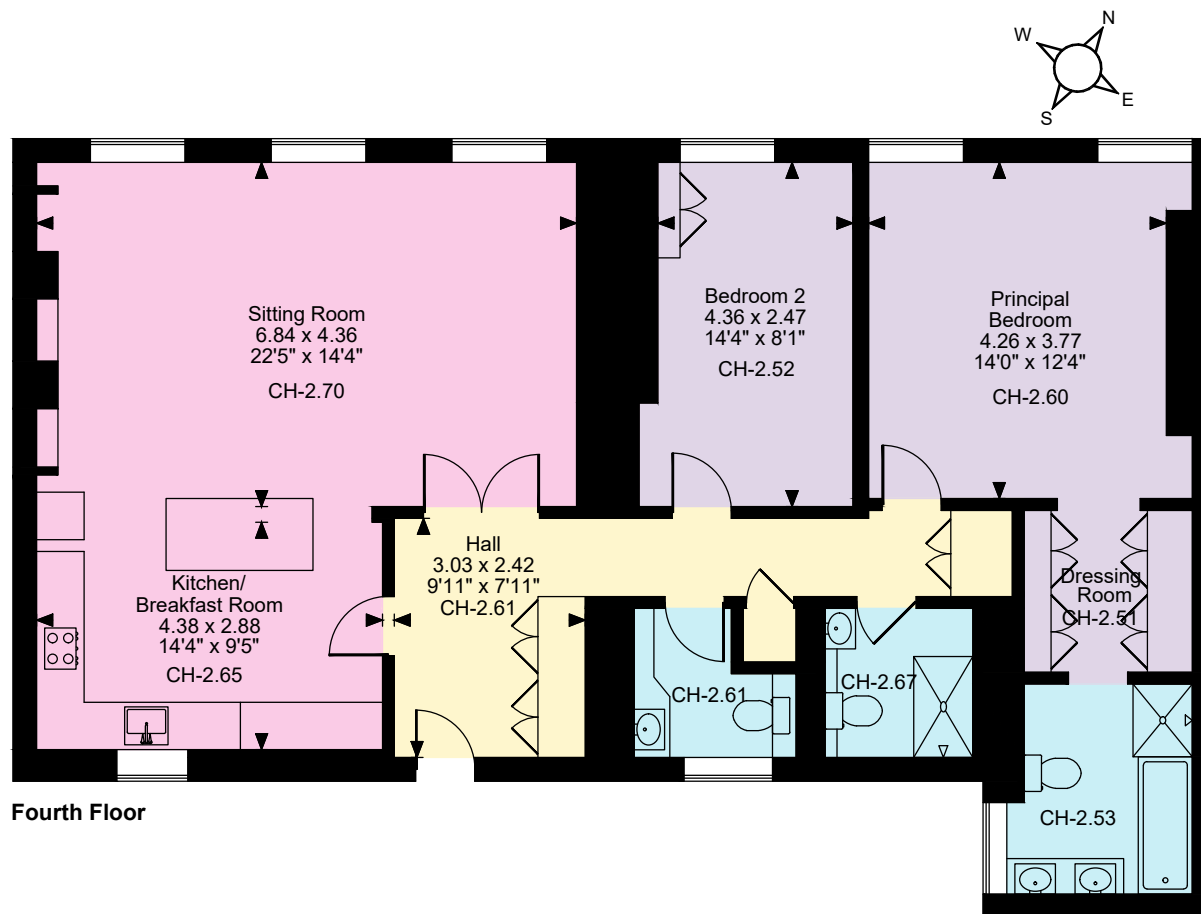
The property

A charming two bedroom, two bathroom apartment situated on the fourth floor of this striking Portland stone building.

Having been recently and immaculately refurbished this wonderfully light apartment benefits from a lift and air-conditioning thought-out. The apartment comprises an entrance hall, large reception room/dining room with open plan kitchen, principal bedroom suite with a dressing room and ensuite bathroom, bedroom 2 with a separate bathroom and also a separate guest WC.







Fourth Floor

The position & size of doors, windows, appliances and other features are approximate only.
© ehouse. Unauthorised reproduction prohibited. Drawing ref. dig/8637394/KKM

Floorplans

Flat internal area 1,261 sq ft (117.5 sq m)
For identification purposes only.

General

Tenure: Leasehold 141 years

Local Authority: City of Westminster

Broadband: Installed at the property

Service Charge: £14,000.00 per annum. Includes hot water and heating. This also includes the £4,000 per annum reserve fund

Council Tax: Band G

EPC Rating: C

Parking: Resident's Permit

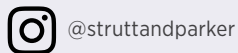
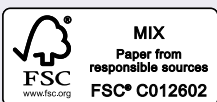
Knightsbridge & Belgravia

66 Sloane Street, London, SW1X 9SH

020 7235 9959

robert.french@struttandparker.com
struttandparker.com

IMPORTANT NOTICE: Strutt & Parker gives notice that: 1. These particulars do not constitute an offer or contract or part thereof. 2. All descriptions, photographs and plans are for guidance only and should not be relied upon as statements or representations of fact. All measurements are approximate and not necessarily to scale. Any prospective purchaser must satisfy themselves of the correctness of the information within the particulars by inspection or otherwise. 3. Strutt & Parker does not have any authority to give any representations or warranties whatsoever in relation to this property (including but not limited to planning/building regulations), nor can it enter into any contract on behalf of the Vendor. 4. Strutt & Parker does not accept responsibility for any expenses incurred by prospective purchasers in inspecting properties which have been sold, let or withdrawn. 5. We are able to refer you to SPF Private Clients Limited ("SPF") for mortgage broking services, and to Alexander James Interiors ("AJI"), an interior design service. Should you decide to use the services of SPF, we will receive a referral fee from them of 25% of the aggregate of the fee paid to them by you for the arrangement of a mortgage and any fee received by them from the product provider. Should you decide to use the services of AJI, we will receive a referral fee of 10% of the net income received by AJI for the services they provide to you. 6. If there is anything of particular importance to you, please contact this office and Strutt & Parker will try to have the information checked for you. Photographs taken February 2025. Particulars prepared February 2025. Strutt & Parker is a trading style of BNP Paribas Real Estate Advisory & Property Management UK Limited



Over 50 offices across England and Scotland,
including Prime Central London

For the finer things in property.

