



# FIRST STREET

—  
CHELSEA SW3





AN ATTRACTIVELY REFURBISHED  
THREE-BEDROOM PERIOD HOUSE  
OFFERING BRIGHT WELL-PLANNED  
ACCOMMODATION LEADING  
ONTO A PATIO GARDEN.

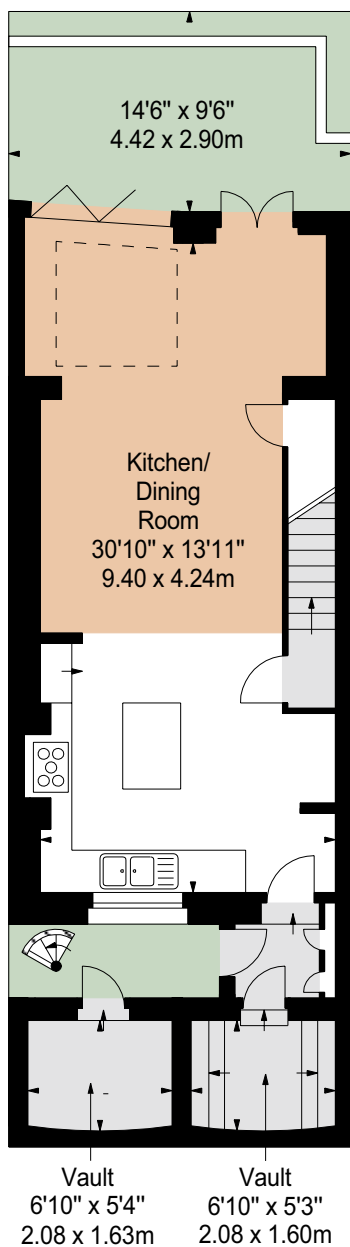




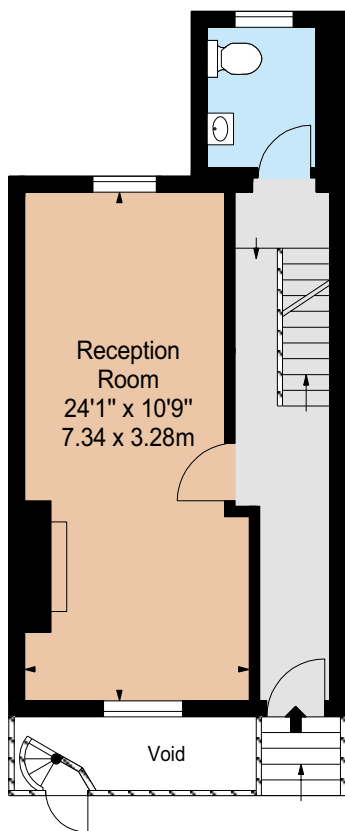


First Street is a popular and quiet street situated between Walton Street and Mossop Street, within close proximity of South Kensington (0.5m), Sloane Square (0.5m) and Knightsbridge (0.6m).

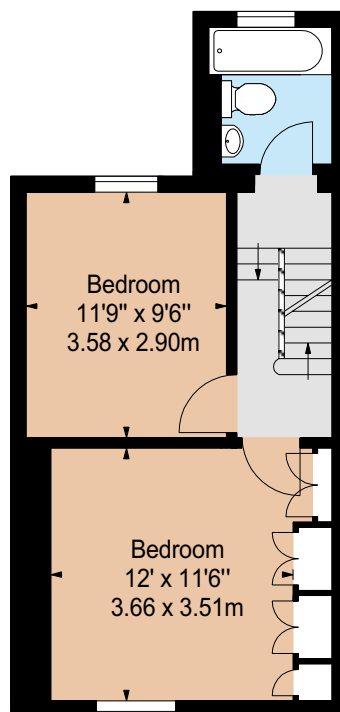




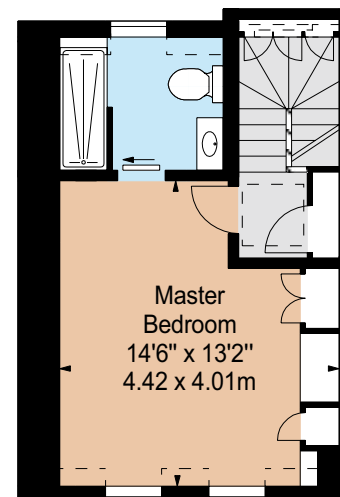
LOWER GROUND FLOOR



GROUND FLOOR



FIRST FLOOR



SECOND FLOOR

#### APPROX. GROSS INTERNAL AREA

1,602 sq ft / 148.83 sq m

Illustration For Identification Only, Not to Scale  
All Calculations include Any/All Areas Under 1.5m  
Head Height.

\* As Defined by RICS - Code of Measuring Practice



TENURE: Freehold

LOCAL AUTHORITY: Royal Borough  
of Kensington and Chelsea

EPC RATING D

COUNCIL TAX Band H

ASKING PRICE £3,600,000

Savills Knightsbridge  
knightsbridge@savills.com  
020 7581 5234  
Savills Sloane Street  
sloanestreet@savills.com  
020 7730 0822  
savills.co.uk



BNP PARIBAS GROUP

SLOANE STREET

020 7235 9959

sloanestreet@struttandparker.com

#### IMPORTANT NOTICE

Strutt & Parker and Savills gives notice that: 1. These particulars do not constitute an offer or contract or part thereof. 2. All descriptions, photographs and plans are for guidance only and should not be relied upon as statements or representations of fact. All measurements are approximate and not necessarily to scale. Any prospective purchaser must satisfy themselves of the correctness of the information within the particulars by inspection or otherwise. 3. Strutt & Parker or Savills do not have any authority to give any representations or warranties whatsoever in relation to this property (including but not limited to planning/building regulations), nor can it enter into any contract on behalf of the Vendor. 4. Strutt & Parker or Savills do not accept responsibility for any expenses incurred by prospective purchasers in inspecting properties which have been sold, let or withdrawn. 5. We are able to refer you to SPF Private Clients Limited ("SPF") for mortgage broking services, and to Alexander James Interiors ("AJI"), an interior design service. Should you decide to use the services of SPF, we will receive a referral fee from them of 25% of the aggregate of the fee paid to them by you for the arrangement of a mortgage and any fee received by them from the product provider. Should you decide to use the services of AJI, we will receive a referral fee of 10% of the net income received by AJI for the services they provide to you. 6. If there is anything of particular importance to you, please contact this office and Strutt & Parker will try to have the information checked for you. Photographs taken April 2024. Particulars prepared April 2024. Strutt & Parker is a trading style of BNP Paribas Real Estate Advisory & Property Management UK Limited