

First Street, Chelsea



Strutt & Parker

Land and property. Since 1885.

A beautifully presented four-bedroom end-of-terrace family house with a large roof terrace, arranged over four floors and ideally situated in a highly central location.

Arranged over four floors, the house presents in great condition and has been used as a family base and as a rental investment. It has the rare benefit of a wider ground floor with four bedrooms, is ideal for family living, or an investment.

The house has been carefully maintained and provides unusually good family accommodation on a sought-after and very central address, just off Walton Street.

The house has the front door set to the right of the main house, giving better ground floor reception space as well as a guest cloakroom off the entrance hall.

The ground floor living space is open-plan with a kitchen, dining room and sitting room, making it ideal for day-to-day living. The first floor has two bedrooms sharing a large bathroom and the whole of second floor given to the principal bedroom which is well arranged with a large south and west facing roof terrace.

The lower ground floor has a TV / snug to the front and a fourth double bedroom to the rear with a shower room in between. This floor has its own entrance into a secure, side alley that provides useful covered, outside space to store bikes and gear.



Location

First Street is a popular and quiet street situated just south of Walton Street and nearly equidistant to South Kensington (0.5m), Sloane Square (0.5m) and Knightsbridge (0.6m) underground stations, which are nearby.

Therefore, the house has a super-central location, within striking distance of the shops, restaurants and amenities that make up the best that prime central London has to offer.

Postcode region: SW3

General

Local Authority: Royal Borough of Kensington and Chelsea

Council Tax: Band G

EPC Rating: D

Parking: Residents parking

Mobile coverage and broadband: Information can be found here: <https://checker.ofcom.org.uk/en-gb/mobile-coverage>

1,730 sq ft (160.7 sq m)

4 bedrooms

2 to 3 reception rooms

Aircon/comfort cooling

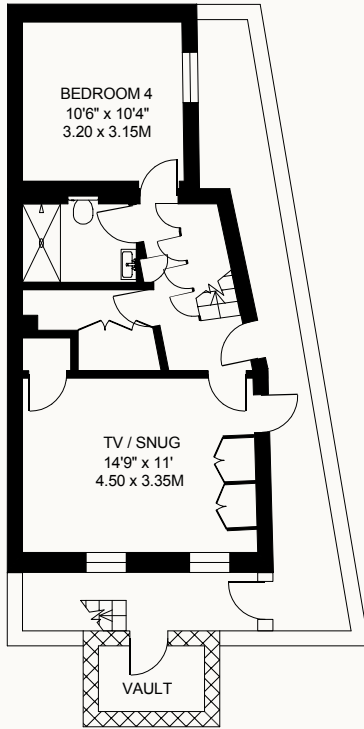
Patio and roof terrace

Freehold

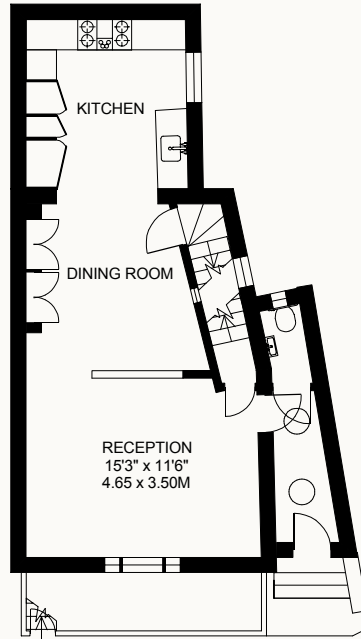
Guide price £3,950,000



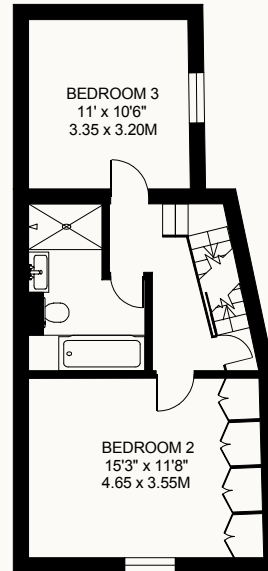
FIRST STREET
 CHELSEA SW3
 APPROXIMATE INTERNAL FLOOR AREA
 1730 SQ.FT / 160.7 SQ.M.
 PLUS VAULT 30 SQ.FT. / 2.8 SQ.M.
 TOTAL AREA INCLUDING VAULT
 1760 SQ.FT / 163.5 SQ.M.



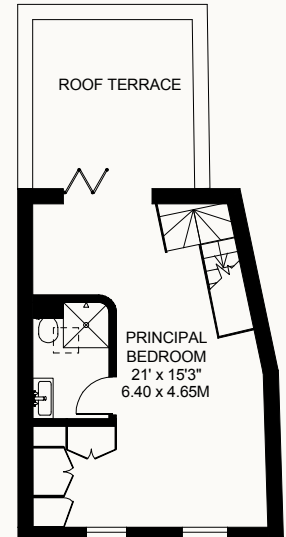
LOWER GROUND FLOOR 450 SQ.FT.



GROUND FLOOR 520 SQ.FT.



FIRST FLOOR 457 SQ.FT.



SECOND FLOOR 303 SQ.FT.

COPYRIGHT:
 FLOORPLAN PRODUCED FOR "STRUTT AND PARKER" by FLOORPLANNERS
 This plan is not to scale (unless specified), and is for guidance only, and must not be relied upon as a statement of fact.
 All measurements and areas are approximate only, and have been prepared in accordance with the current edition of the RICS Code of Measuring Practice.
 Please read the Important Notice on the last page of the text of the particulars.

Strutt & Parker Chelsea

43 Cadogan Street, London, SW3 2PR

020 7225 3866 | chelsea@struttandparker.com



@struttandparker

struttandparker.com

IMPORTANT NOTICE: Strutt & Parker gives notice that: 1. These particulars do not constitute an offer or contract or part thereof. 2. All descriptions, photographs and plans are for guidance only and should not be relied upon as statements or representations of fact. All measurements are approximate and not necessarily to scale. Any prospective purchaser must satisfy themselves of the correctness of the information within the particulars by inspection or otherwise. 3. Strutt & Parker does not have any authority to give any representations or warranties whatsoever in relation to this property (including but not limited to planning/building regulations), nor can it enter into any contract on behalf of the Vendor. 4. Strutt & Parker does not accept responsibility for any expenses incurred by prospective purchasers in inspecting properties which have been sold, let or withdrawn. 5. We are able to refer you to SPF Private Clients Limited ("SPF") for mortgage broking services, and to Alexander James Interiors ("AJI"), an interior design service. Should you decide to use the services of SPF, we will receive a referral fee from them of 25% of the aggregate of the fee paid to them by you for the arrangement of a mortgage and any fee received by them from the product provider. Should you decide to use the services of AJI, we will receive a referral fee of 10% of the net income received by AJI for the services they provide to you. 6. If there is anything of particular importance to you, please contact this office and Strutt & Parker will try to have the information checked for you. Strutt & Parker is a trading style of BNP Paribas Real Estate Advisory & Property Management UK Limited. Photographs taken May 2026. Particulars prepared May 2026.

**Strutt
& Parker**

Land and property. Since 1885.