



Launay House and Pound Cottage,
Fish Street, Redbourn, Hertfordshire

For the finer things in property.

**STRUTT
& PARKER**

BNP PARIBAS GROUP

Launay House and Pound Cottage, Fish Street, Redbourn, Hertfordshire, AL3 7LP

A magnificent Grade II Listed house and cottage, with splendid original features and a storied history

M1 (Jct 9) 2.6 miles, Harpenden town centre 3.1 miles, Harpenden mainline station 3.3 miles (19 minutes to London St Pancras), St. Albans 4.0 miles, Welwyn Garden City 9.5 miles

Sitting room | Drawing room | Dining room
Snug/study | Kitchen | Cloakroom | Principal bedroom with en suite bathroom | 4 further bedrooms | Family bathroom | Further study
Cellar | Pool house | Summer house | Walled garden | Cottage with sitting room, dining room, kitchen, 2 bedrooms & bathroom

The property

Launay House and Pound Cottage is a delightful Grade II Listed property, arranged as two dwellings and set in the heart of the desirable village of Redbourn, close to the beautiful Common and within the village conservation area. The house was formerly a farmhouse, and Pound Cottage was converted from a barn. The timber framed farmhouse is thought to date from the 17th century, built on the site of a medieval chapel, part of Redbourn Priory, and its history is featured at Redbourn Village Museum. Both the house and the cottage have been meticulously restored, retaining many original features including beams, original brick and oak floors, sash windows and shutters, fireplaces, and panelling.

Conservation repairs have included specialist repointing in lime mortar, relaying the roof with reclaimed clay peg tiles, renewing lead roofs, and conservation to the windows and shutters. Launay House features a welcoming reception hall leading into a light filled, comfortable sitting room with painted panelling and a grand

inglenook fireplace. The elegant dual aspect drawing room has an original oak flooring, attractive brick fireplace, period panelling, a gas Jotul stove, and a large sash window with recessed shutters. There is also a cosy snug/study with painted cupboards, fireplace and delightful views of the garden from the bay window. The dining room has beamed walls, an original brick floor and an old bread oven and leads though to the kitchen. The kitchen has an impressive, vaulted ceiling and is fitted with handmade cabinets and larder cupboards, with granite worktops and a butler's sink.

There are four well-presented first-floor double bedrooms, all with period features and built-in cupboards. The principal bedroom has original oak floorboards, a large Georgian sash window overlooking the garden, and an en suite bathroom. The first floor also includes a large family bathroom. The second floor has an additional double bedroom and an adjoining study, which is ideal for peaceful, private home working.

Pound Cottage is a two-bedroom property adjoining Launay House, offering completely self-contained, separate accommodation. The cottage was built as a four-cart barn in 1785, with the building date carved into the property's exposed timber beams.

The cottage features a comfortable sitting room with a bay window, a formal dining room and a well-equipped kitchen with modern fitted units, a stainless-steel range cooker and space for all the necessary appliances. On the first floor, Pound Cottage has two well-presented double bedrooms, a study area and bathroom. Outside it has its own walled garden with patio, shed and parking for 2 cars.



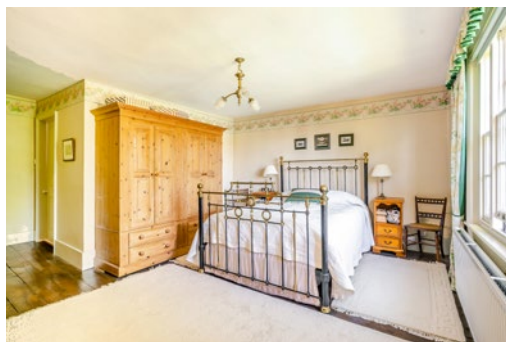




Outside

Launay House has a splendid walled garden, ideal for family games, with well-maintained lawns, box hedging and established borders. Mature trees throughout the garden include Scots pine, weeping variegated holly, beech, quince, medlar, lime and a large mulberry tree providing good coverage and privacy. There is an outdoor swimming pool, heated by air source heat pump, with an oak framed pool house/ games room and its own sun terrace with palm trees and bamboo. The grounds also include a double-glazed summer house/workshop and a timber playhouse. The large cellar provides useful additional storage space.

There is access for vehicles and plenty of parking on both sides of the property. A driveway off Fish Street Farm leads to a five-bar wooden gate providing access to the front of Launay House with parking for multiple vehicles. There is a gravel driveway from Fish Street giving rear access to Launay House, and to the parking for Pound Cottage.



Location

Redbourn is a picturesque and highly sought-after village, with a large tree lined Common with cricket pitch in the centre of the village. The village has plenty of day-to-day amenities, including a GP surgery, dentist, optician, library, post office, pharmacy, small supermarket, and other village shops, plus several pubs and cafes, a golf club, churches, and a leisure centre. There is an active community with many clubs and societies and regular events are held on the Common or in the Village Hall.

The village is home to several nurseries, a primary school, and there are outstanding schools in the surrounding area. Redbourn is very well connected, with easy access to the M1 and rail links to central London available from nearby Harpenden mainline station (19 minutes to London St. Pancras) or from the cathedral city of St Albans.





Pound Cottage



Pound Cottage

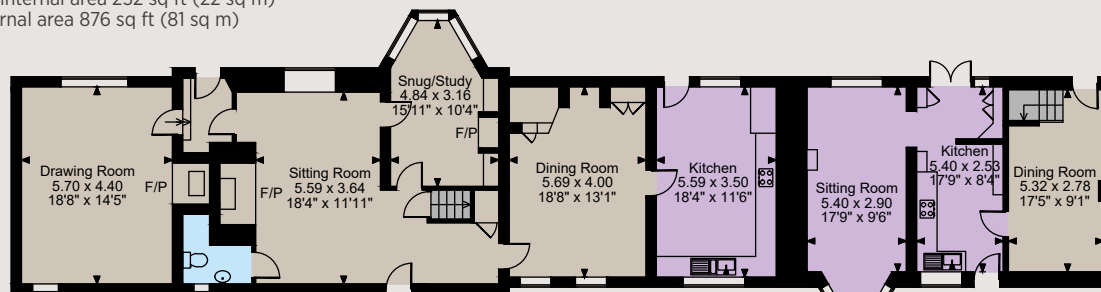
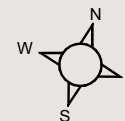


Pound Cottage



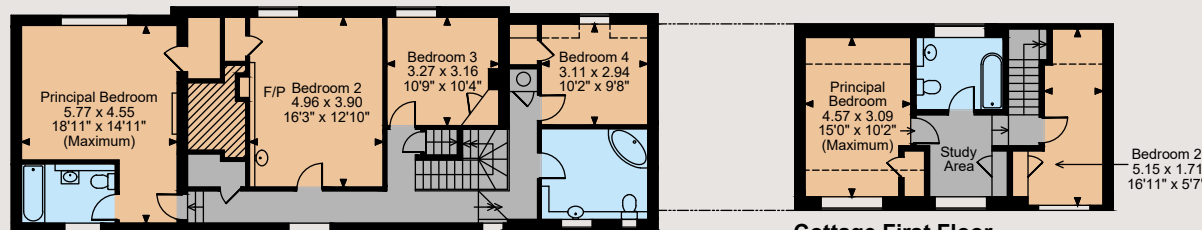
Pound Cottage

Launay House and Pound Cottage, Fish Street, Redbourn
Main House internal area 2,939 sq ft (273 sq m)
Outbuilding internal area 232 sq ft (22 sq m)
Cottage internal area 876 sq ft (81 sq m)



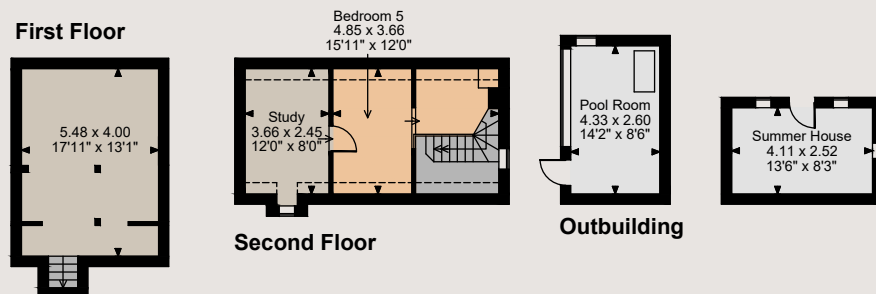
Ground Floor

Cottage Ground Floor



First Floor

Cottage First Floor



Second Floor

Outbuilding

Cellar

The position & size of doors, windows, appliances and other features are approximate only.

□ □ □ Denotes restricted head height

© ehouse. Unauthorised reproduction prohibited. Drawing ref. dig/8557992/NJD



General

Local Authority: St albans City & District Council

Services: Mains drainage, water, electricity and gas

Council Tax: Launay House Band G

Pound Cottage Band E

Tenure: Freehold

Guide Price: £2,295,000

Directions

From junction 9 of the M1, take Dunstable Road/A5183 towards St. Albans and Redbourn. After 1.8 miles, continue straight ahead at the roundabout to remain on the A5183 and at the next roundabout, take the third exit onto the High Street. Take the 1st turning on the left into a private road "Fish Street Farm", and then take the right fork up to a 5-bar gate and the private parking for Launay House.

Satnav AL3 7NS

What3words: summer.create.sticks

Harpenden

49 High Street, Harpenden, Hertfordshire AL5 2SJ

01582 764343

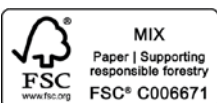
harpenden@struttandparker.com

struttandparker.com

[@struttandparker](https://www.instagram.com/struttandparker)

[f /struttandparker](https://www.facebook.com/struttandparker)

Over 45 offices across England and Scotland, including Prime Central London



For the finer things in property.



IMPORTANT NOTICE: Strutt & Parker gives notice that: 1. These particulars do not constitute an offer or contract or part thereof. 2. All descriptions, photographs and plans are for guidance only and should not be relied upon as statements or representations of fact. All measurements are approximate and not necessarily to scale. Any prospective purchaser must satisfy themselves of the correctness of the information within the particulars by inspection or otherwise. 3. Strutt & Parker does not have any authority to give any representations or warranties whatsoever in relation to this property (including but not limited to planning/building regulations), nor can it enter into any contract on behalf of the Vendor. 4. Strutt & Parker does not accept responsibility for any expenses incurred by prospective purchasers in inspecting properties which have been sold, let or withdrawn. 5. We are able to refer you to SPF Private Clients Limited ("SPF") for mortgage broking services, and to Alexander James Interiors ("AJI"), an interior design service. Should you decide to use the services of SPF, we will receive a referral fee from them of 25% of the aggregate of the fee paid to them by you for the arrangement of a mortgage and any fee received by them from the product provider. Should you decide to use the services of AJI, we will receive a referral fee of 10% of the net income received by AJI for the services they provide to you. 6. If there is anything of particular importance to you, please contact this office and Strutt & Parker will try to have the information checked for you. Photographs taken September 2023. Particulars prepared March 2024. Strutt & Parker is a trading style of BNP Paribas Real Estate Advisory & Property Management UK Limited