

# Pelham Court

Fulham Road, Chelsea



**STRUTT  
& PARKER**

BNP PARIBAS GROUP



## A charming, portered 4th floor, 2-bedroom flat in a prime central location.

A charming and thoughtfully renovated apartment situated on the 4th floor, with lift, of this highly sought after Edwardian style mansion block.



**1 RECEPTION ROOM**



**2 BEDROOMS**



**1 BATHROOM**



**LEASEHOLD**



**733 SQ FT**



**GUIDE PRICE  
£1.170,000**



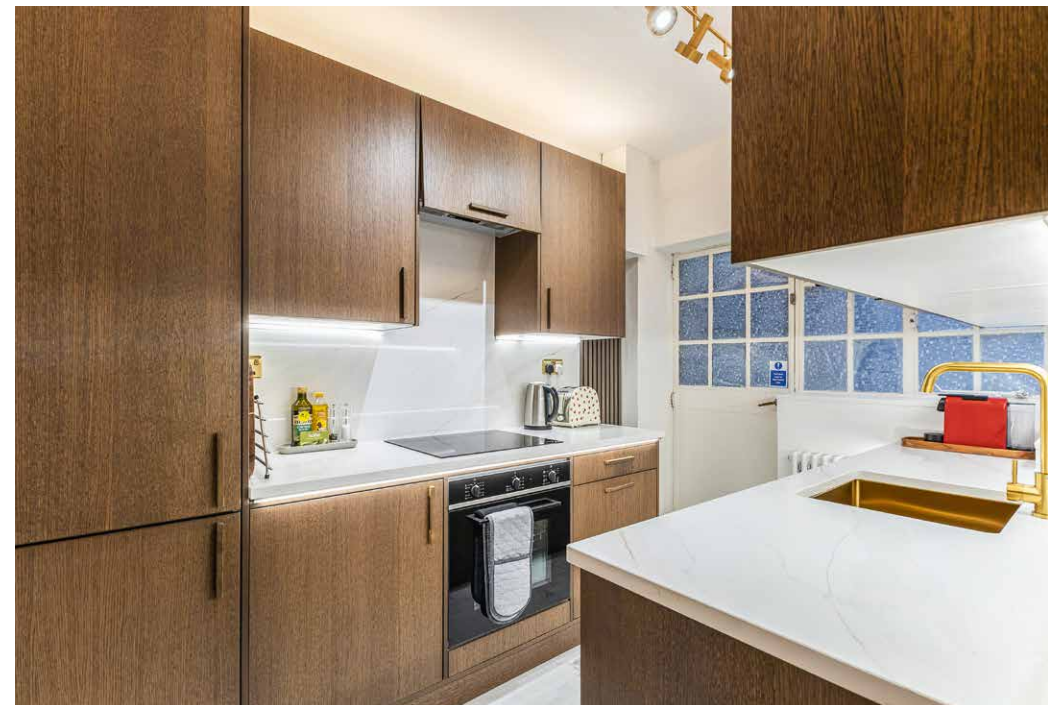
### The property

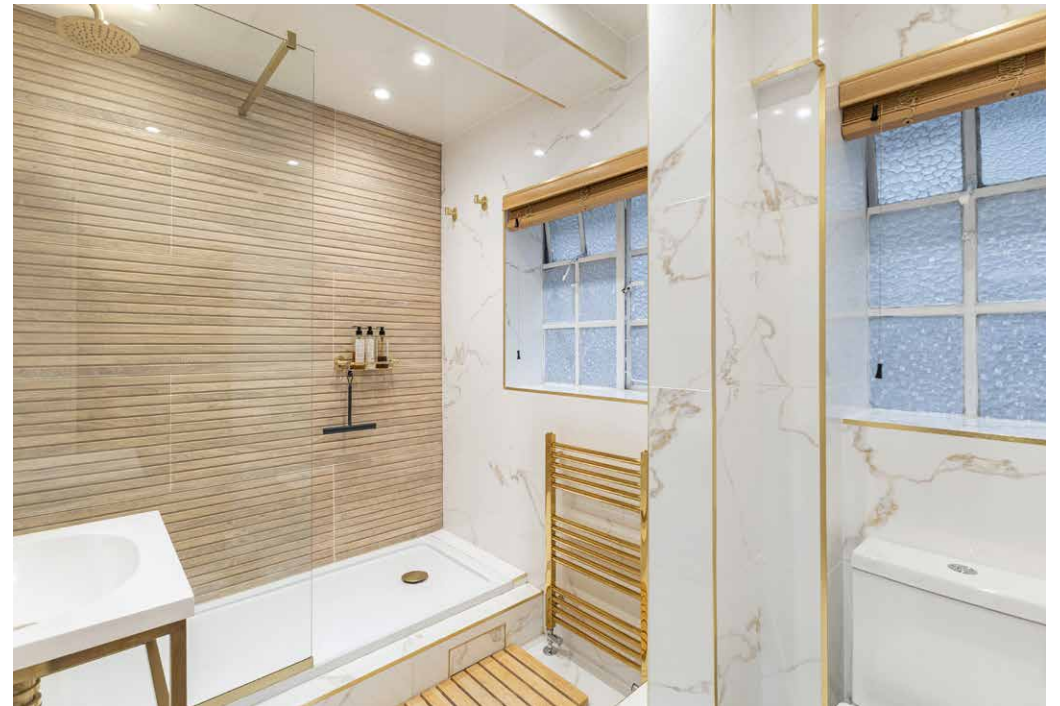
This secure and well located mansion flat benefits from a lift, live-in porter and pretty and private communal garden.

Pelham Court is ideally located on the Fulham Road opposite Pelham Crescent with plenty of boutique shops, cafes, bars and restaurants on the doorstep.

South Kensington tube station 0.2 miles away.

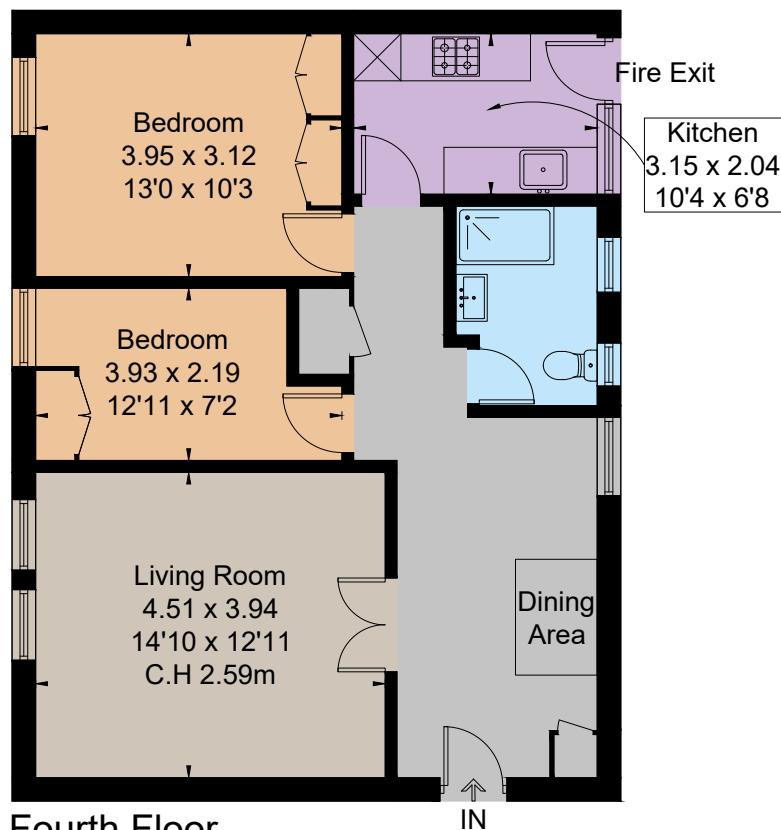
The location also enjoys close proximity to many famous landmarks including The Natural History Museum (approx. 0.4 miles) The Victoria & Albert Museum (approx. 0.4 miles) and the world famous department store Harrods can be found approx 0.7 miles away.







Approximate Floor Area = 68.1 sq m / 733 sq ft



Fourth Floor



This floor plan has been drawn in accordance with RICS Property Measurement 2nd edition.

All measurements, including the floor area, are approximate and for illustrative purposes only. @fourwalls-group.com #102092

## Floorplans

**Main Flat internal area 733 sq ft (68.1 sq m)**  
For identification purposes only.

## General

**Tenure:** Leasehold 93 Years

**Local Authority:** Kensington and Chelsea

**Mobile and Broadband checker:** Information can be found here <https://checker.ofcom.org.uk/en-gb/>

**Service Charge:** Circa £2,705 per half year

**Council Tax:** F

**EPC Rating:** D

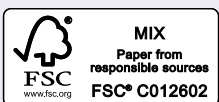
**Parking:** Residential permit

## Chelsea

43 Cadogan Street, London, SW3 2PR

**02036214788**

chelsea@struttandparker.com  
struttandparker.com



@struttandparker

Over 50 offices across England and Scotland,  
including Prime Central London

For the finer things in property.

