



The Haven, Fullerton Road, Wherwell, Andover,
Hampshire

For the finer things in property.

**STRUTT
& PARKER**

BNP PARIBAS GROUP 

The Haven Fullerton Road, Wherwell, Andover, Hampshire, SP11 7JS

Detached family home in the heart of
the Test Valley

Stockbridge 4.5 miles, Andover (London
Waterloo from 69 minutes) 4.5 miles,
Winchester 10.5 miles

Entrance hall | Kitchen/dining room | Sitting
room | Study | 4 Bedrooms | 2 Bathrooms
Utility | Cloakroom | Garden studio | Garage
Garden | EPC Rating D

The property

The Haven is a detached home that sits in a secluded position in the heart of the village. Built in the 1960's the house provides well proportioned accommodation over two floors. Throughout the house the light is excellent, with large windows throughout. On the ground floor is a generous entrance hall from which all rooms are accessed. To the front of the house is the attractive kitchen/dining room which has a range of wall and base units with wooden worksurfaces and a Belfast sink. The sitting room is an impressive size with a central open fireplace and French doors out onto the terrace. Adjacent to this room is a study. There is a large utility room which has a door out into the rear garden and a cloakroom completes the ground floor accommodation. On the first floor is a lovely landing really enhancing the feeling of space. The principal room is double aspect with built in wardrobes and has an en suite bathroom with a walk in shower. There are three further bedrooms and a family bathroom.

Outside

The house is approached through wooden gates with a driveway providing parking for several vehicles and access to the single garage. The garden wraps around the house, and there is a paved terrace to the front (the southerly aspect) and there is a lovely summer house here. To the rear of the house is a further paved terrace. Steps lead up the bank to a further elevated area where there is potential to further landscape and create additional garden space.

Location

The Haven is situated in the centre of Wherwell, a beautiful village renowned for its many period houses and cottages. The village has a public house, Saxon church, primary school and a village hall It is one of Hampshire's most photographed villages owing to its rows of very pretty timber framed thatched cottages and through which the well-known River Test chalk stream flows.

There is a post office/village store in the nearby village of Chilbolton. Stockbridge provides an excellent range of everyday amenities including a doctors' surgery. The nearby town of Andover offers a comprehensive range of shopping, education and leisure facilities, as well as a mainline railway station providing fast services to Waterloo. The A303 is close at hand allowing convenient access to London and the West Country.

There is an excellent choice of schools in the area. As well as the village primary school there is a secondary school in Stockbridge and a selection of private schools including Farleigh School near Andover, Princes Mead, St Swithun's and The Pilgrims School in Winchester.

There are plenty of exceptional walks from the house and there is also access to the water meadows across a footbridge along the Test Way to the neighbouring village of Chilbolton.





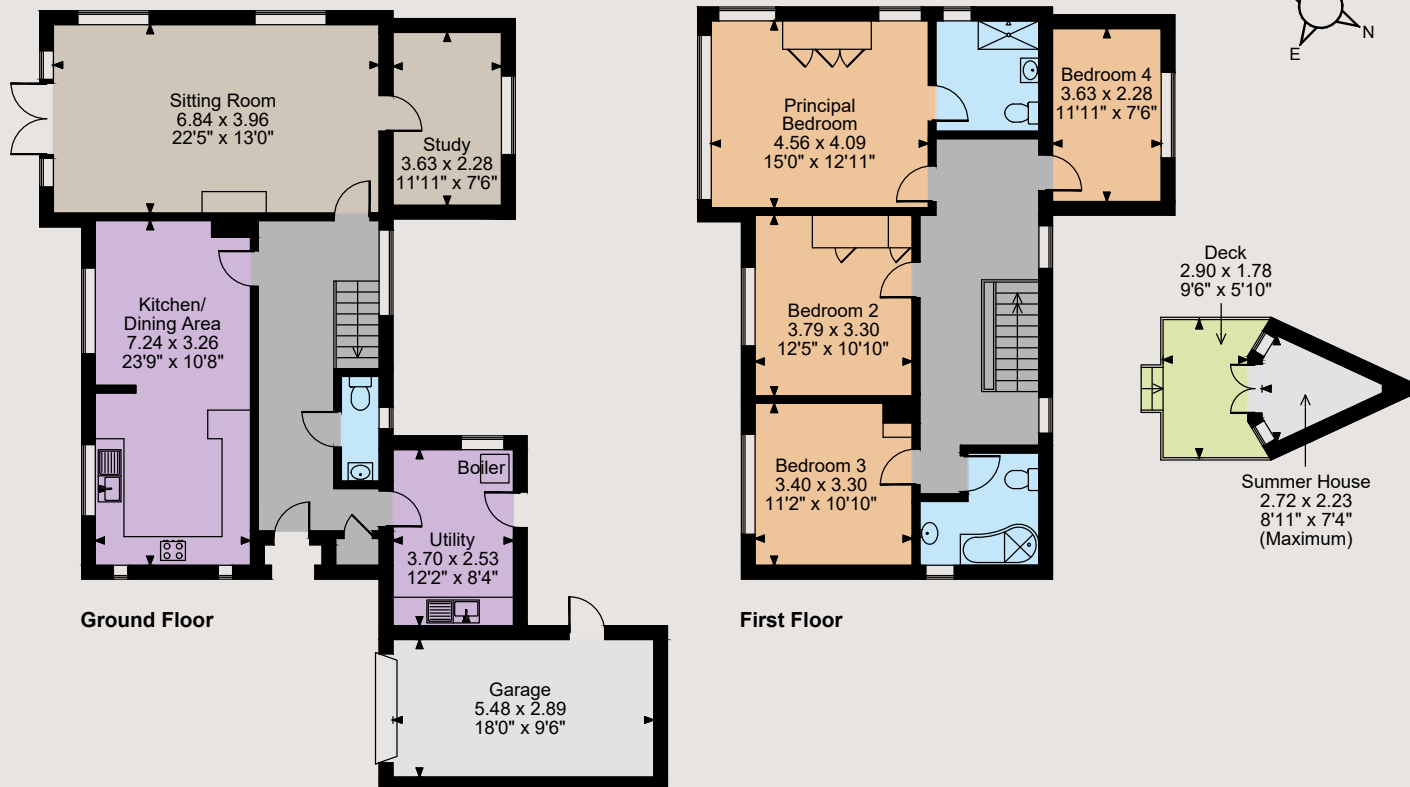
Floorplans

House internal area 1,811 sq ft (168 sq m)

Garage internal area 170 sq ft (16 sq m)

Summer House internal area 35 sq ft (3 sq m)

For identification purposes only.



The position & size of doors, windows, appliances and other features are approximate only.
© ehous. Unauthorised reproduction prohibited. Drawing ref. dig/8582461/JLW



Directions

what3words///yours.hounded.influence

General

Local Authority: Test Valley Borough Council
Services: Mains electricity, drainage and water.
 Oil fired central heating
Council Tax: Band G
Tenure: Freehold
Guide Price: £1,150,000

Winchester

6 Jewry Street, Winchester SO23 8RZ

01962 869999

winchester@struttandparker.com
 struttandparker.com

@struttandparker

/struttandparker

Over 45 offices across England and Scotland,
 including Prime Central London



For the finer things in property.



IMPORTANT NOTICE: Strutt & Parker gives notice that: 1. These particulars do not constitute an offer or contract or part thereof. 2. All descriptions, photographs and plans are for guidance only and should not be relied upon as statements or representations of fact. All measurements are approximate and not necessarily to scale. Any prospective purchaser must satisfy themselves of the correctness of the information within the particulars by inspection or otherwise. 3. Strutt & Parker does not have any authority to give any representations or warranties whatsoever in relation to this property (including but not limited to planning/building regulations), nor can it enter into any contract on behalf of the Vendor. 4. Strutt & Parker does not accept responsibility for any expenses incurred by prospective purchasers in inspecting properties which have been sold, let or withdrawn. 5. We are able to refer you to SPF Private Clients Limited ("SPF") for mortgage broking services, and to Alexander James Interiors ("AJI"), an interior design service. Should you decide to use the services of SPF, we will receive a referral fee from them of 25% of the aggregate of the fee paid to them by you for the arrangement of a mortgage and any fee received by them from the product provider. Should you decide to use the services of AJI, we will receive a referral fee of 10% of the net income received by AJI for the services they provide to you. 6. If there is anything of particular importance to you, please contact this office and Strutt & Parker will try to have the information checked for you. Photographs taken February 2024. Particulars prepared February 2024. Strutt & Parker is a trading style of BNP Paribas Real Estate Advisory & Property Management UK Limited