



Clevedon

29 Fulwith Mill Lane, Harrogate

CROFT

STRUTT
& PARKER

BNP PARIBAS GROUP

Clevedon

29 Fulwith Mill Lane

Harrogate HG2 8HJ

A beautifully restored period family home, set in around half an acre of manicured gardens that enjoys southerly views over the viaduct.

Harrogate town centre 2 miles. A1(M) 10 miles, Leeds Bradford Airport 12 miles, Ripon 14 miles, Leeds 15 miles, York 21 miles

Reception hall | Breakfast kitchen | 2 Utilities Pantry | Dining room | Living room | Snug Cloakroom | Principal suite, dressing room, en suite & private balcony | 2 Double bedrooms en suite | 2 Further doubles, 1 with dressing room Studio/6th bedroom | Shower room | Spa suite sauna, shower room & plant room | Cellar

Triple garage | Office | Bike store | Electric gated private driveway | EPC rating E

The property

Clevedon is substantial lovingly restored period property. This fabulous family home truly offers the perfect countryside and town balance with over 7,883 sq. ft. of living space, being within striking distance of the town centre yet offering beautiful Yorkshire countryside on the doorstep.

Upon entering the property, you are greeted by a beautiful porch and a light and airy entrance hall with original wood flooring and panelling, offering the perfect reception for guests. Off the entrance hall, an exquisite handmade bespoke kitchen which has been designed and installed by the luxury furniture company RoomRoom Interiors Harrogate. A large feature island with Quartz worktops which accommodates a large circular solid walnut table and can seat up to six also with bar seating for four giving flexibility for entertaining. Miele cooking appliances, integrated extraction to the hob and wine conditioning dual zone cabinet. With four Miele ovens the cooking facilities are to a professional level, two full size ovens, microwave

combination and steam oven have the flexibility for the most discerning chef. The all-important boiling tap by Quooker and Large Integrated American style Fisher and Paykel refrigeration with built in ice dispenser. Breakfast pantry with Quartz worktops and solid walnut internals. The sink area has an integrated dishwasher, integrated refrigeration, large, mirrored splash back with concealed lighting above. Secret double doors leading into utility room which has large sink again with Quartz worktops throughout. There is space for a washing machine and dryer. Perfectly positioned to be close to the kitchen is a significant dining room with a double-sided contemporary glass fireplace giving views through to the dining kitchen. A generous bay window lights up the room with natural light and benefits from a built-in seating area. There are double doors accessing the south facing terrace with beautiful views over the garden. There is also a snug that has a feature fireplace and dual doors leading on to the back garden overlooking the water fountain. The generous living room stretches over 27ft in length and provides a perfect place to relax.

The property has been extended with a stunning addition of a spa suite benefiting from a sauna and guest shower room and changing room. Within the extension, there is also a sizeable office/games room, boot room and triple car garage. On the ground floor there is also a cloakroom and cellar.

Access to the first floor is via a grand spacious staircase; the principal suite a feature wooden panel wall and private access on to a south-facing balcony boasting beautiful views over the garden. The principal suite also comprises a dressing room with built in wardrobes and an exquisite four-piece bathroom suite with Lapidia tiles. On the first floor, there are three further en suite bedrooms, two bedrooms and a house shower room. The entire second floor space has been made into a substantial fabulous studio, bedroom or games room.











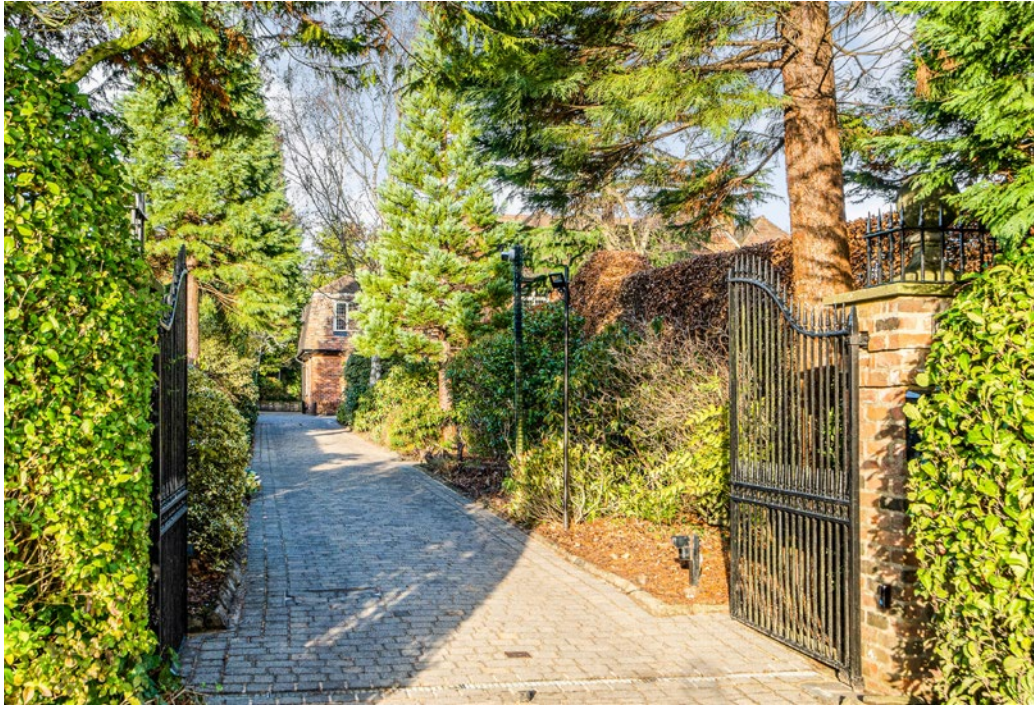
Outside

The property is accessed via electric gates and down a long and private driveway, which offers space to park numerous vehicles and a substantial triple garage to the rear. Externally the property also comprises a private and beautifully landscaped lawned garden to the front and rear. Off both the lawned areas are stunning terraces and intricate gravel pathways that lead to a rare limestone rockery and little woodland and a little beck.

Location

Clevedon is in a highly sought after residential position on the south side of Harrogate. It has a wealth of local amenities offered on Leeds Road, including local shops, Marks & Spencer Simply Food, Harrogate Cricket club and the Hornbeam Business Park. The town boasts a wealth of fine Georgian and Victorian architecture including the famous Betty's tea rooms, excellent shopping, leisure and cultural facilities, cinemas, cafes and restaurants and a number of supermarkets. For the commuter the property is well connected by road, with the A1(M) just 10 miles from the property, Offering easy access to the north and south. There is a train station at Hornbeam Park to connect with the mainline stations at Leeds or York. There are highly regarded local primary and secondary schools both private and state nearby. Including Rossett School, Ashville College and Harrogate Grammar School.





Floorplan - Internal Areas

Main house 7,184 sq. ft (667.4 sq. m)
 Cellar 288 sq. ft (26.7 sq. m)
 Above garage 429 sq. ft (39.8 sq. m)
 Bike store/WC 70 sq. ft (6.5 sq. m)
 Total 7,971 sq. ft (740.4 sq. m)

Directions

Postcode - HG2 8HJ
 What3Words - ///vouch.thing.pushes

General

Local Authority: North Yorkshire County Council
Services: Mains gas, electric, water and drainage
Council Tax: Tax band H
Tenure: Freehold
Guide Price: £2,745,000

Mobile and Broadband checker:

Information can be found here <https://checker.ofcom.org.uk/en-gb/>

Harrogate

9 Westgate House, Albert Street, Harrogate HG1 1JX

01423 561274

harrogate@struttandparker.com
struttandparker.com

Croft Residential

Pavilion 2000 Amy Johnson Way York YO30 4XT

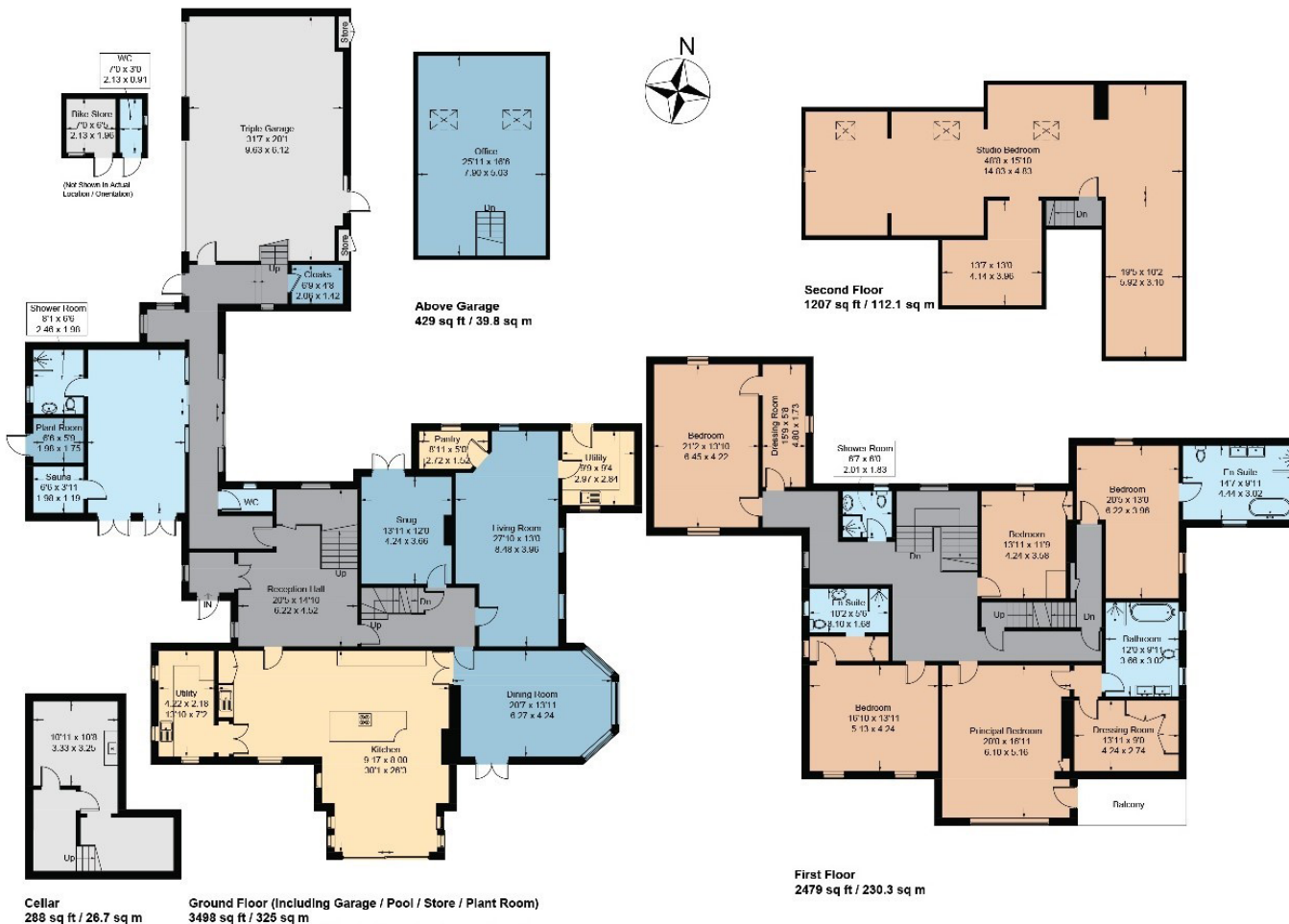
01904 238222

toby@croftresidential.co.uk
croftresidential.co.uk

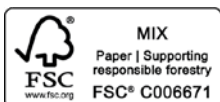
[@struttandparker](https://twitter.com/struttandparker)

[f/struttandparker](https://www.facebook.com/struttandparker)

Over 50 offices across England and Scotland,
 including Prime Central London



IMPORTANT NOTICE: Strutt & Parker gives notice that: 1. These particulars do not constitute an offer or contract or part thereof. 2. All descriptions, photographs and plans are for guidance only and should not be relied upon as statements or representations of fact. All measurements are approximate and not necessarily to scale. Any prospective purchaser must satisfy themselves of the correctness of the information within the particulars by inspection or otherwise. 3. Strutt & Parker does not have any authority to give any representations or warranties whatsoever in relation to this property (including but not limited to planning/building regulations), nor can it enter into any contract on behalf of the Vendor. 4. Strutt & Parker does not accept responsibility for any expenses incurred by prospective purchasers in inspecting properties which have been sold, let or withdrawn. 5. We are able to refer you to SPF Private Clients Limited ("SPF") for mortgage broking services, and to Alexander James Interiors ("AJI"), an interior design service. Should you decide to use the services of SPF, we will receive a referral fee from them of 25% of the aggregate of the fee paid to them by you for the arrangement of a mortgage and any fee received by them from the product provider. Should you decide to use the services of AJI, we will receive a referral fee of 10% of the net income received by AJI for the services they provide to you. 6. If there is anything of particular importance to you, please contact this office and Strutt & Parker will try to have the information checked for you. Photographs taken December 2022. Particulars prepared March 2023 Strutt & Parker is a trading style of BNP Paribas Real Estate Advisory & Property Management UK Limited



For the finer things in property.

