



1 Key House, 39-41 Glebe Place, Chelsea SW3

1 Key House, 39-41 Glebe Place, Chelsea SW3

A smart and stylish two-bedroom apartment in an attractive Chelsea property, close to fashionable King's Road.

Reception/dining room/kitchen | Master bedroom suite with shower room on the mezzanine | Further bedroom suite with shower room | EPC rating D

A beautifully appointed two-bedroom apartment, on the second floor of this handsome Chelsea property. The apartment features a stylish, high quality finish throughout, with clean, neutral décor and contemporary fittings. There is an open-plan reception room and kitchen which is fitted with modern units in grey and integrated appliances. Both bedrooms are doubles, with one located on a mezzanine level, and both benefit from en suite shower rooms with attractive modern suites.

Terms

Local Authority: The Royal Borough of Kensington and Chelsea

Tenure: Leasehold: Expires 12/03/2135 with approximately 112 years remaining

Price: £1,395,000 subject to contract

Service Charge: £4,600 per annum

Council Tax Band: G

Sloane Street

66 Sloane Street, London SW1X 9SH

+44 (0)207 235 9959

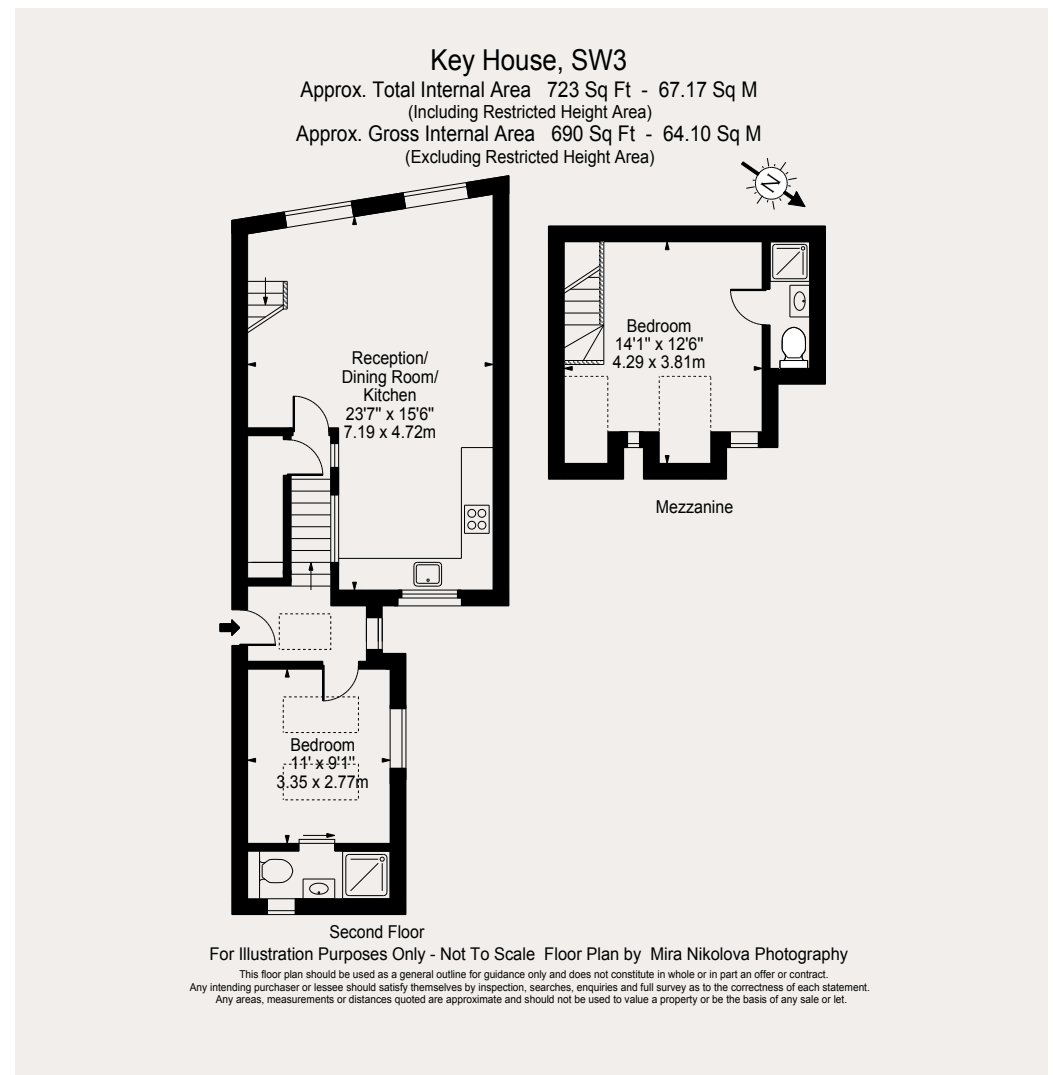
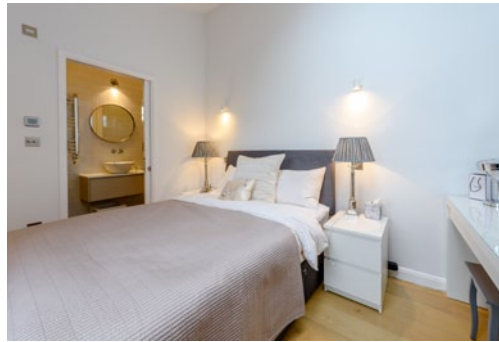
sloanestreet@struttandparker.com

Rose & Partners

Michelin House, 81 Fulham road, SW3 6RD

+44 (0)7752 727 957

www.roseandpartners.uk



IMPORTANT NOTICE: Strutt & Parker gives notice that: 1. These particulars do not constitute an offer or contract or part thereof. 2. All descriptions, photographs and plans are for guidance only and should not be relied upon as statements or representations of fact. All measurements are approximate and not necessarily to scale. Any prospective purchaser must satisfy themselves of the correctness of the information within the particulars by inspection or otherwise. 3. Strutt & Parker does not have any authority to give any representations or warranties whatsoever in relation to this property (including but not limited to planning/building regulations), nor can it enter into any contract on behalf of the Vendor. 4. Strutt & Parker does not accept responsibility for any expenses incurred by prospective purchasers in inspecting properties which have been sold, let or withdrawn. 5. We are able to refer you to SPF Private Clients Limited ("SPF") for mortgage broking services, and to Alexander James Interiors ("AJI"), an interior design service. Should you decide to use the services of SPF, we will receive a referral fee from them of 25% of the aggregate of the fee paid to them by you for the arrangement of a mortgage and any fee received by them from the product provider. Should you decide to use the services of AJI, we will receive a referral fee of 10% of the net income received by AJI for the services they provide to you. 6. If there is anything of particular importance to you, please contact this office and Strutt & Parker will try to have the information checked for you. Photographs taken February 2020. Particulars prepared March 2020. Strutt & Parker is a trading style of BNP Paribas Real Estate Advisory & Property Management UK Limited.