

Clarence Gate Gardens,  
Glentworth Street NW1



Strutt  
& Parker

Land and property. Since 1885.

**Four bedroom apartment in this highly regarded mansion block, located opposite Regent's Park.**

A spacious four-bedroom lateral apartment located on the first floor within this prestigious red brick mansion block built circa 1907. Further benefits include a Juliet balcony, lift, and porter

Gate Gardens is a quiet street located within striking distance of the shops, bars and restaurants of Marylebone High Street, the open spaces of Regent's Park and the transport facilities provided by Baker Street Underground and Marylebone Station.



**General**

Local Authority: Westminster  
Council Tax: Band G  
EPC Rating: D  
Residents' parking  
Broadband installed

**1,459 sq ft (135.6 sq m)**

**Porter**

**Lift**

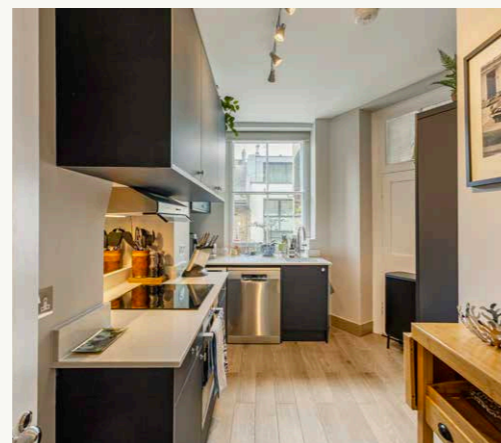
**Juliet balcony**

**Located moments away from**

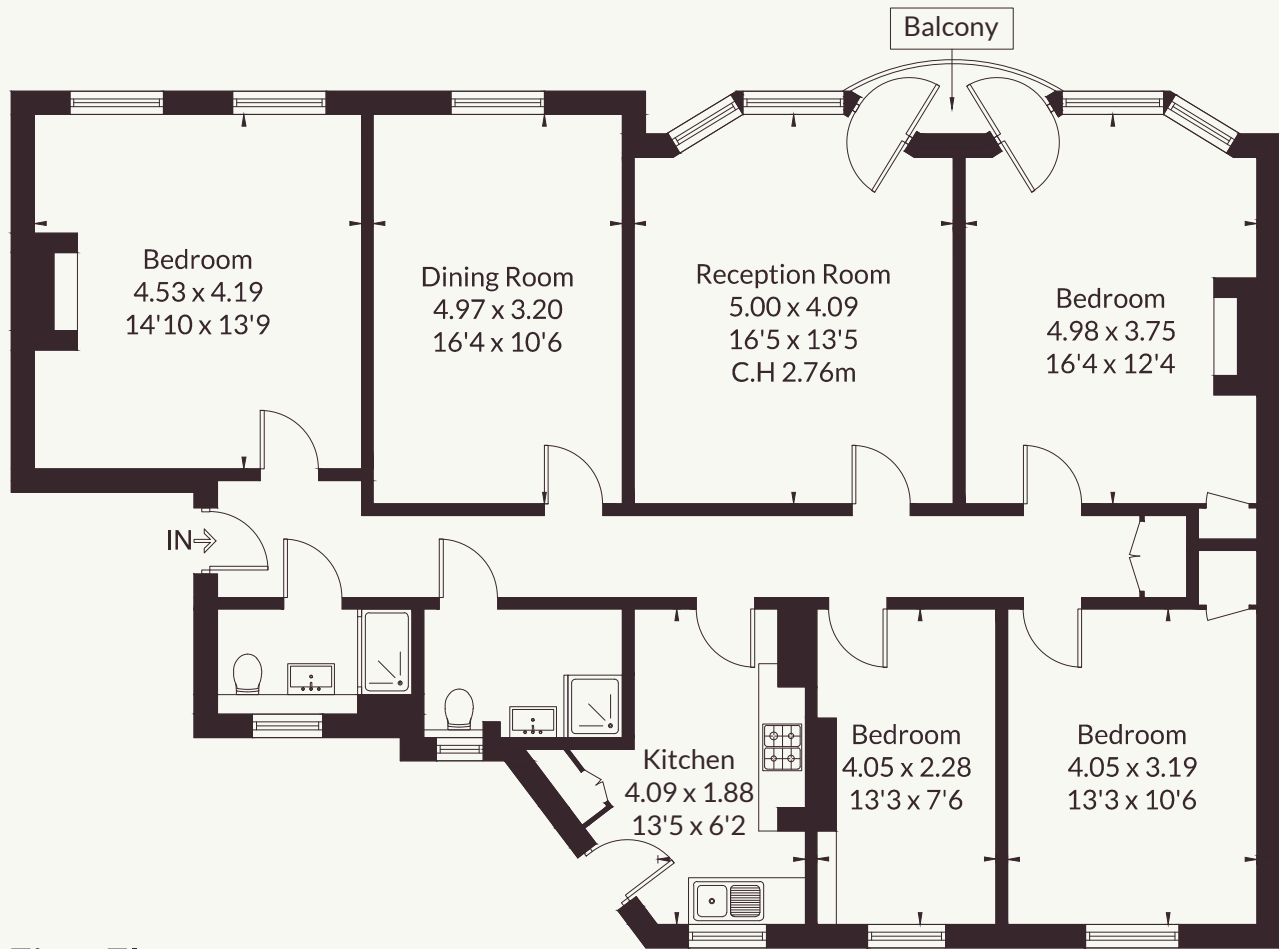
**Regent's Park**

**Share of freehold**

**Asking Price: £2,250,000**



Approximate Floor Area = 135.6 sq m / 1459 sq ft



## First Floor

This floor plan has been drawn in accordance with RICS Property Measurement 2nd edition. All measurements, including the floor area, are approximate and for illustrative purposes only. @fourwalls-group.com #105743

## Strutt & Parker Private Client

7 Harewood Avenue, London NW1 6AA

07899721074 | zach.madison@struttandparker.com



@struttandparker struttandparker.com

IMPORTANT NOTICE: Strutt & Parker gives notice that: 1. These particulars do not constitute an offer or contract or part thereof. 2. All descriptions, photographs and plans are for guidance only and should not be relied upon as statements or representations of fact. All measurements are approximate and not necessarily to scale. Any prospective purchaser must satisfy themselves of the correctness of the information within the particulars by inspection or otherwise. 3. Strutt & Parker does not have any authority to give any representations or warranties whatsoever in relation to this property (including but not limited to planning/building regulations), nor can it enter into any contract on behalf of the Vendor. 4. Strutt & Parker does not accept responsibility for any expenses incurred by prospective purchasers in inspecting properties which have been sold, let or withdrawn. 5. We are able to refer you to SPF Private Clients Limited ("SPF") for mortgage broking services, and to Alexander James Interiors ("AJI"), an interior design service. Should you decide to use the services of SPF, we will receive a referral fee from them of 25% of the aggregate of the fee paid to them by you for the arrangement of a mortgage and any fee received by them from the product provider. Should you decide to use the services of AJI, we will receive a referral fee of 10% of the net income received by AJI for the services they provide to you. 6. If there is anything of particular importance to you, please contact this office and Strutt & Parker will try to have the information checked for you. Strutt & Parker is a trading style of BNP Paribas Real Estate Advisory & Property Management UK Limited. Template by Fourwalls. Photographs taken March 2026. Particulars prepared March 2026.

Available to buy through

# Strutt & Parker

Land and property. Since 1885.