



Gloucester Gardens, Bayswater, W2

For the finer things in property.

**STRUTT
& PARKER**

BNP PARIBAS GROUP

Gloucester Gardens, Bayswater, W2

An attractive studio flat located within a charming period building in Bayswater.

A well-presented second floor studio flat benefitting from a spacious separate kitchen, stylish bathroom, and with access to a beautiful communal garden.

Gloucester Gardens is a residential tree lined street located in the heart of Bayswater, whilst also being a short distance from the amenities and transport links of Notting Hill Gate and Paddington.

Reception room | Kitchen | Bathroom
Communal gardens | EPC rating C

Terms

Tenure: Share of Freehold

Service Charge: £1,000 per annum approximately

Ground Rent: £10 per annum

Council Tax: Band E

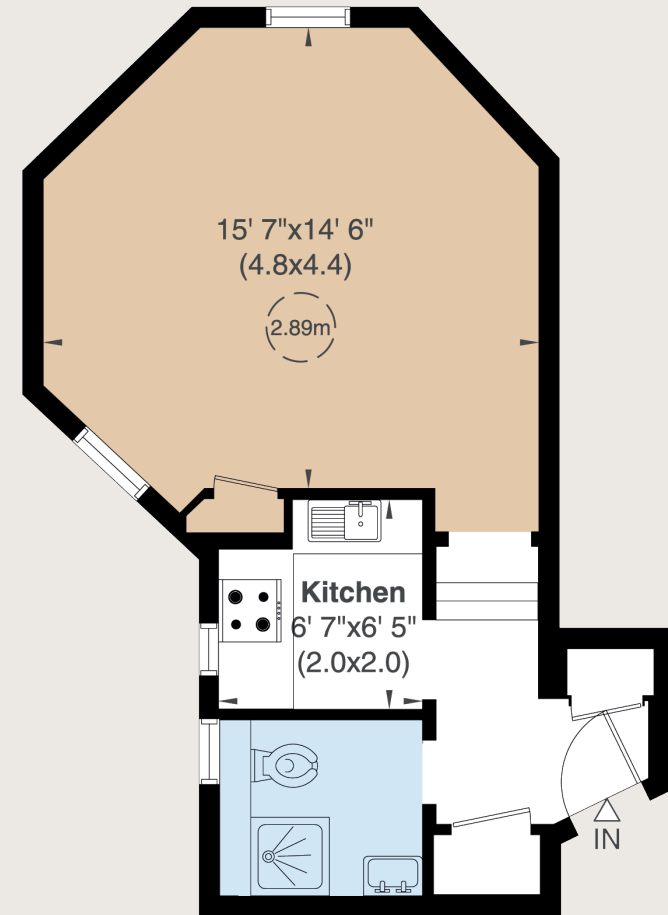
Local Authority: The City of Westminster

Asking Price: £360,000

The seller of this property is an employee of BNP Paribas Real Estate.



Gross Internal Area 349 sq ft (32 sq m)
For identification purposes only.



Second Floor

IMPORTANT NOTICE

Strutt & Parker gives notice that: 1. These particulars do not constitute an offer or contract or part thereof. 2. All descriptions, photographs and plans are for guidance only and should not be relied upon as statements or representations of fact. All measurements are approximate and not necessarily to scale. Any prospective purchaser must satisfy themselves of the correctness of the information within the particulars by inspection or otherwise. 3. Strutt & Parker does not have any authority to give any representations or warranties whatsoever in relation to this property (including but not limited to planning/building regulations), nor can it enter into any contract on behalf of the Vendor. 4. Strutt & Parker does not accept responsibility for any expenses incurred by prospective purchasers in inspecting properties which have been sold, let or withdrawn. 5. We are able to refer you to SPF Private Clients Limited ("SPF") for mortgage broking services, and to Alexander James Interiors ("AJI"), an interior design service. Should you decide to use the services of SPF, we will receive a referral fee from them of 25% of the aggregate of the fee paid to them by you for the arrangement of a mortgage and any fee received by them from the product provider. Should you decide to use the services of AJI, we will receive a referral fee of 10% of the net income received by AJI for the services they provide to you. 6. If there is anything of particular importance to you, please contact this office and Strutt & Parker will try to have the information checked for you. Photographs taken October 2024. Particulars prepared October 2024. Strutt & Parker is a trading style of BNP Paribas Real Estate Advisory & Property Management UK Limited.

Notting Hill

303 Westbourne Grove, London, W11 2QA

020 7221 1111

nottinghill@struttandparker.com

struttandparker.com



Over 50 offices across England and Scotland,
including Prime Central London

For the finer things in property.

**STRUTT
& PARKER**

BNP PARIBAS GROUP