



Gordon Place  
Kensington, W8

**STRUTT  
& PARKER**  
BNP PARIBAS GROUP

## A charming Victorian house in a quaint pedestrianised enclave in Kensington, W8.

This beautifully presented home is set on one of Kensington's most sought-after locations. The house is accessed via a private walkway which offers a unique feeling of privacy in a prime Central London location.



1 RECEPTION ROOM



3 BEDROOMS



2 BATHROOMS



FREEHOLD



1,385 SQ FT



PRICE  
£2,850,000

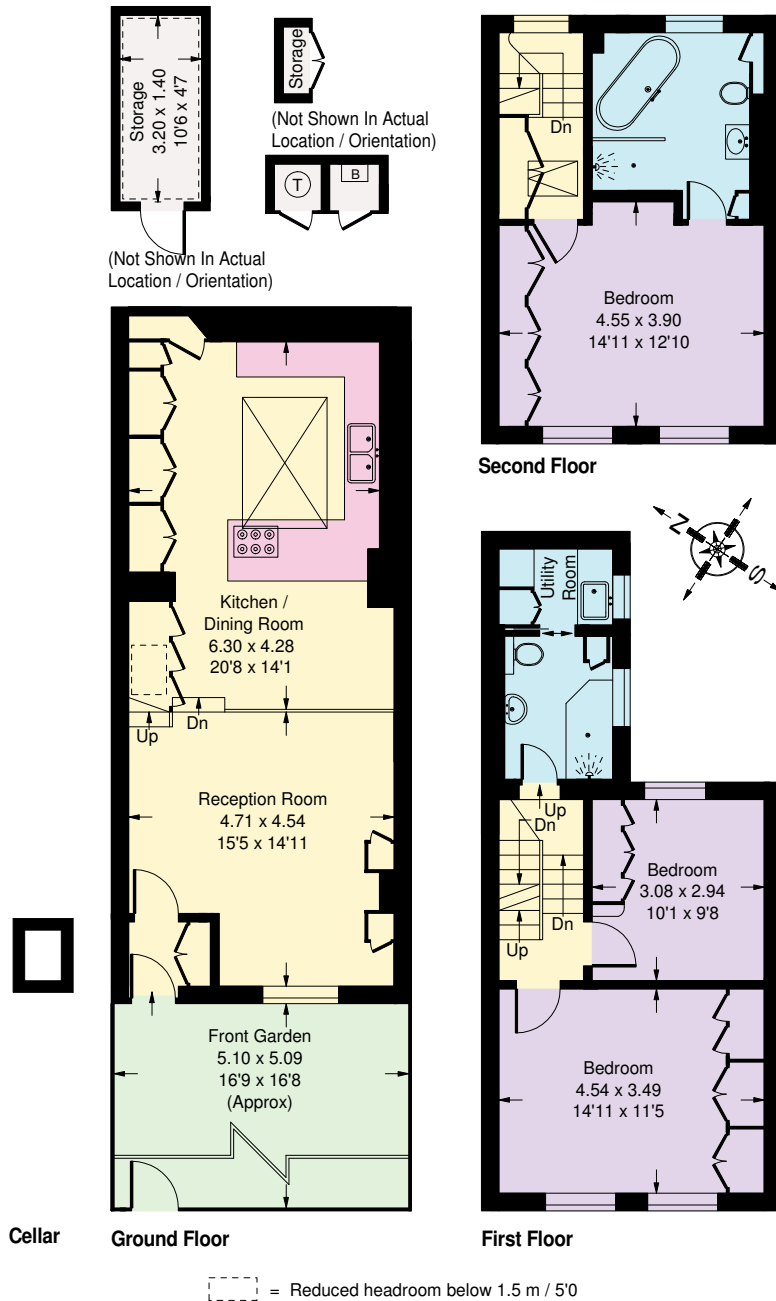
### The property

The property extends to 1,385 sq ft and comprises a stunning double reception room leading to a modern fitted kitchen with premium appliances throughout, 3 double bedrooms, 2 bathrooms and a utility room. The current owners have paid particular attention to the quality of finish, and to storage solutions; there is a wine cellar, ample built in cupboards and discreet shelving throughout the ground floor.

### Location

Gordon Place is located just metres from Kensington High Street, and the famous amenities it has to offer. Both High Street Kensington and Notting Hill Gate tube stations are a stone's throw away, whilst Kensington Gardens are close by for access to Hyde Park.





## Floorplans

**Gross internal area 1,316 sq ft (122.3 sq m)**  
**Storage and boiler/tank cupboards 69 sq ft (6.4 sq m)**  
**Total 1,385 sq ft (128.7 sq m) excluding cellar**  
**For identification purposes only.**

## General

**Tenure:** Freehold  
**Local Authority:** The Royal Borough of Kensington and Chelsea  
**Council Tax:** Band H

**EPC Rating:** B

**Parking:** Residents' permit

**Mobile coverage and broadband:** Information can be found here: <https://checker.ofcom.org.uk/en-gb/mobile-coverage>

**IMPORTANT NOTICE:** Strutt & Parker gives notice that: 1. These particulars do not constitute an offer or contract or part thereof. 2. All descriptions, photographs and plans are for guidance only and should not be relied upon as statements or representations of fact. All measurements are approximate and not necessarily to scale. Any prospective purchaser must satisfy themselves of the correctness of the information within the particulars by inspection or otherwise. 3. Strutt & Parker does not have any authority to give any representations or warranties whatsoever in relation to this property (including but not limited to planning/building regulations), nor can it enter into any contract on behalf of the Vendor. 4. Strutt & Parker does not accept responsibility for any expenses incurred by prospective purchasers in inspecting properties which have been sold, let or withdrawn. 5. We are able to refer you to SPF Private Clients Limited ("SPF") for mortgage broking services, and to Alexander James Interiors ("AJI"), an interior design service. Should you decide to use the services of SPF, we will receive a referral fee from them of 25% of the aggregate of the fee paid to them by you for the arrangement of a mortgage and any fee received by them from the product provider. Should you decide to use the services of AJI, we will receive a referral fee of 10% of the net income received by AJI for the services they provide to you. 6. If there is anything of particular importance to you, please contact this office and Strutt & Parker will try to have the information checked for you. Photographs taken March 2026. Particulars prepared March 2026. Strutt & Parker is a trading style of BNP Paribas Real Estate Advisory & Property Management UK Limited

## Kensington

103 Kensington Church Street, London W8 7LN  
**020 7938 3666**

kensington@struttandparker.com  
 struttandparker.com



Over 50 offices across England and Scotland, including Prime Central London

For the finer things in property.

