

Belgravia House, Halkin Place
Belgravia



Strutt
& Parker

Land and property. Since 1885.

A beautiful refurbished three-bedroom apartment with parking and porter in the heart of Belgravia.

This very spacious, ground floor, three-bedroom apartment (approximately 1,573sq ft / 146 sq m) is located in this well-established and sought-after portered block in the heart of Belgravia.

The property has been refurbished to exacting standards and is presented in a luxurious, contemporary style. The accommodation includes a large double reception room, which opens onto a wonderful, wide private garden terrace, which has been beautifully landscaped.

There are three bedrooms all with en suite bathrooms, a dressing room, a guest cloakroom and utility area. The property also benefits from a very large secure underground parking space, daily porter and security and also benefits from access to the private gardens and tennis courts of Belgrave Square (by application).



Location

Belgravia House is a mid-20th century portered block, located on Halkin Place, between Belgrave Square and Lowndes Street and moments from Motcomb Street. Perfectly located for the stylish boutiques, restaurants and facilities of Belgravia, Sloane Street and Knightsbridge with Harrods a short distance away.

Postcode region: SW1X

General

Tenure: Leasehold, approximately 96 years remaining
Local Authority: Westminster City
Council Tax: Band G
EPC Rating: C
Service Charge: Approximately £10,808 per annum
Ground Rent: £750 per annum
Parking: Secure underground parking space
Mobile coverage and broadband: Information can be found here: <https://checker.ofcom.org.uk/en-gb/mobile-coverage>

1,573 sq ft (146.1 sq m)

Three bedrooms
Three bathrooms
Guest cloakroom
Leasehold

Guide price £4,500,000

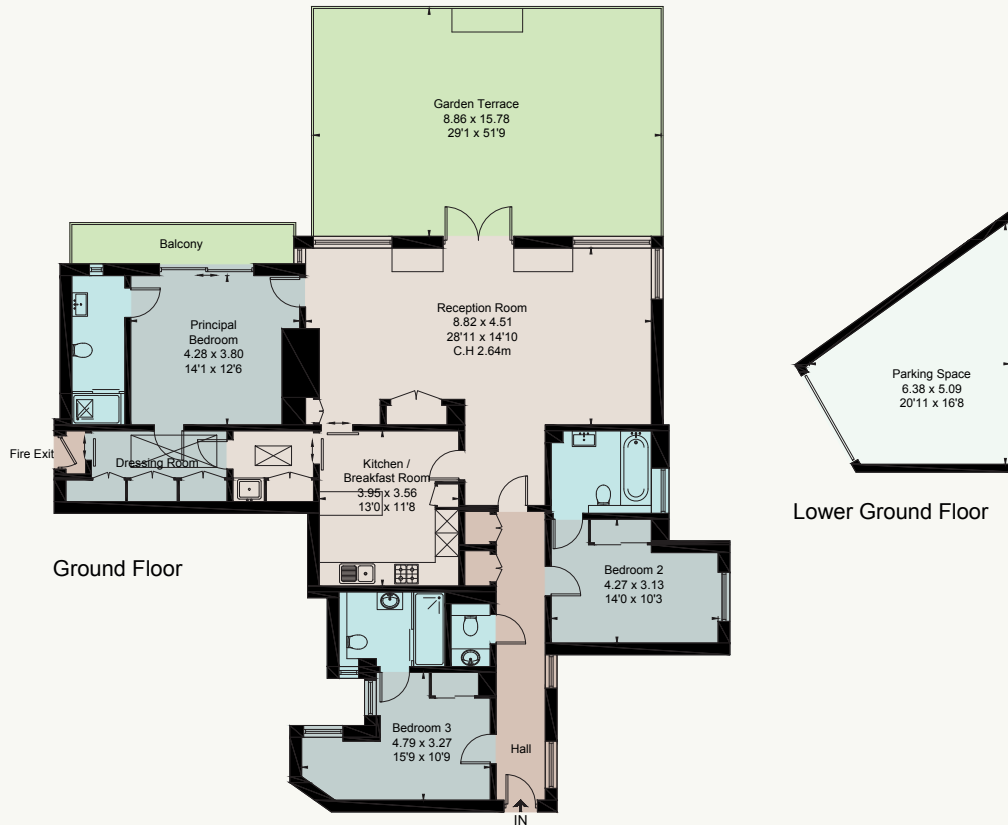


HALKIN PLACE, SW1X

Approximate Floor Area = 146.1 sq m / 1573 sq ft (Excluding Parking Space)

Garden Terrace / Balcony = 56.5 sq m / 608 sq ft

Parking Space = 20.8 sq m / 224 sq ft



This floor plan has been drawn in accordance with RICS Property Measurement 2nd edition.

All measurements, including the floor area, are approximate and for illustrative purposes only. @fourwalls-group.com #77197

Strutt & Parker Knightsbridge & Belgravia

66 Sloane Street, London SW1X 9SH

020 7235 9959 | knightsbridge@struttandparker.com



@struttandparker

struttandparker.com

IMPORTANT NOTICE: Strutt & Parker gives notice that: 1. These particulars do not constitute an offer or contract or part thereof. 2. All descriptions, photographs and plans are for guidance only and should not be relied upon as statements or representations of fact. All measurements are approximate and not necessarily to scale. Any prospective purchaser must satisfy themselves of the correctness of the information within the particulars by inspection or otherwise. 3. Strutt & Parker does not have any authority to give any representations or warranties whatsoever in relation to this property (including but not limited to planning/building regulations), nor can it enter into any contract on behalf of the Vendor. 4. Strutt & Parker does not accept responsibility for any expenses incurred by prospective purchasers in inspecting properties which have been sold, let or withdrawn. 5. We are able to refer you to SPF Private Clients Limited ("SPF") for mortgage broking services, and to Alexander James Interiors ("AJI"), an interior design service. Should you decide to use the services of SPF, we will receive a referral fee from them of 25% of the aggregate of the fee paid to them by you for the arrangement of a mortgage and any fee received by them from the product provider. Should you decide to use the services of AJI, we will receive a referral fee of 10% of the net income received by AJI for the services they provide to you. 6. If there is anything of particular importance to you, please contact this office and Strutt & Parker will try to have the information checked for you. Strutt & Parker is a trading style of BNP Paribas Real Estate Advisory & Property Management UK Limited. Photographs taken April 2026. Particulars prepared April 2026.

Strutt & Parker

Land and property. Since 1885.