

Harcourt Terrace, Chelsea



Strutt & Parker

Land and property. Since 1885.

An exceptional Chelsea home with grand proportions.

This well-presented raised ground floor flat benefits from excellent natural light, with the front reception room enjoying afternoon sunlight that creates a bright, warm, and inviting atmosphere. The property also offers the convenience of no stairs to climb, making everyday living easier. Offering comfortable living space and a welcoming feel, the flat is ideal for both relaxing and entertaining.

Situated in the heart of Chelsea on the sought-after Harcourt Terrace adjoining Hollywood Road, this beautifully presented two-bedroom flat is positioned on the raised ground floor, featuring elegant proportions and well-balanced accommodation.

Extending to approximately 71.07 sq m, the property is particularly notable for its impressive reception space with superb 3.55m ceiling height, creating a wonderful sense of volume and grandeur. Positioned centrally is a well-appointed kitchen, while to the rear are two bedrooms served by a contemporary bathroom.



Location

Harcourt Terrace is a quiet residential street adjoining Hollywood Road, a popular pocket within the western side of Chelsea ideally positioned for the many boutique shops, cafes and restaurants on the Hollywood Road and the Fulham Road. This fantastic location offers a vibrant village feel and a real hub of activity.

Postcode region: SW10

General

Tenure: Leasehold, 973 years
Local Authority: Royal Borough of Kensington and Chelsea
Council Tax: Band G
EPC Rating: D
Service Charge: £5,120 pa includes £1,320 reserve fund contribution
Ground Rent: Peppercorn
Parking: Residents' permit
Mobile coverage and broadband: Information can be found here: <https://checker.ofcom.org.uk/en-gb/mobile-coverage>

765 sq ft (71.07 sq m)
Raised ground floor
Large reception/dining room
Separate kitchen
Modern bathroom
Two bedrooms
Leasehold

Guide price £1,395,000

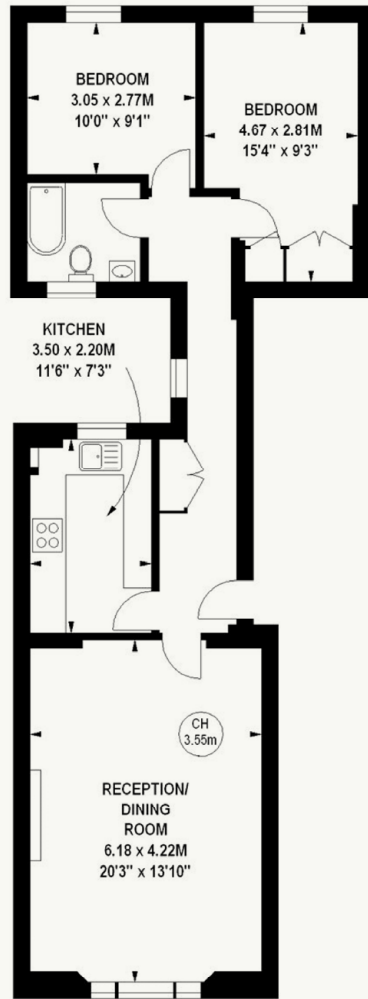


Harcourt Terrace, SW10

Approximate gross internal area

71.07 sq m / 765 sq ft

Key :
CH - Ceiling Height



Raised Ground Floor

Illustration For Identification Purposes Only. Not To Scale
*Floorplan Drawn According To RICS Guidelines
Copyright of FeaturePRO

Strutt & Parker Chelsea

140 Fulham Road, London, SW10 9PY

020 7373 1010 | chelseaSW10@struttandparker.com



@struttandparker

struttandparker.com

IMPORTANT NOTICE: Strutt & Parker gives notice that: 1. These particulars do not constitute an offer or contract or part thereof. 2. All descriptions, photographs and plans are for guidance only and should not be relied upon as statements or representations of fact. All measurements are approximate and not necessarily to scale. Any prospective purchaser must satisfy themselves of the correctness of the information within the particulars by inspection or otherwise. 3. Strutt & Parker does not have any authority to give any representations or warranties whatsoever in relation to this property (including but not limited to planning/building regulations), nor can it enter into any contract on behalf of the Vendor. 4. Strutt & Parker does not accept responsibility for any expenses incurred by prospective purchasers in inspecting properties which have been sold, let or withdrawn. 5. We are able to refer you to SPF Private Clients Limited ("SPF") for mortgage broking services, and to Alexander James Interiors ("AJI"), an interior design service. Should you decide to use the services of SPF, we will receive a referral fee from them of 25% of the aggregate of the fee paid to them by you for the arrangement of a mortgage and any fee received by them from the product provider. Should you decide to use the services of AJI, we will receive a referral fee of 10% of the net income received by AJI for the services they provide to you. 6. If there is anything of particular importance to you, please contact this office and Strutt & Parker will try to have the information checked for you. Strutt & Parker is a trading style of BNP Paribas Real Estate Advisory & Property Management UK Limited. Photographs taken May 2026. Particulars prepared May 2026.

Strutt & Parker

Land and property. Since 1885.