



Harrington Gardens, SW7

STRUTT & PARKER
BNP PARIBAS GROUP 

Harrington Gardens, SW7

A stunning newly refurbished two double bedroom, two bathroom flat with private patio and terrace.

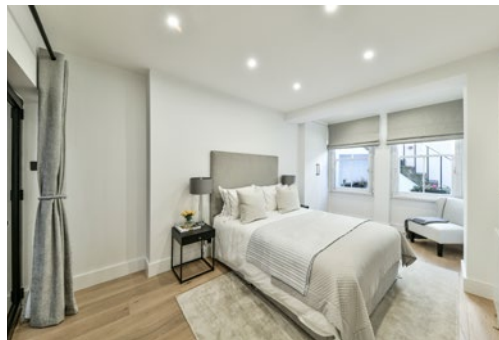
A stunning newly refurbished large two double bedroom, two bathroom flat with a separate study, private terrace, patio area, separate kitchen and access to beautiful communal gardens incl. a share of freehold.

Two bedrooms | Two bathrooms | Reception room | Dining room | Kitchen | Study | Balcony
Patio garden | Utility room | Storage room
Communal gardens | EPC Rating E

Harrington Gardens is a highly desirable address located within the heart of South Kensington. Nos. 47-75 were constructed between 1883 - 1885 and share the same architecture as Courtfield Road, having both been designed by Walter Graves. This particular stretch of Harrington Gardens is often referred to as 'the garden side' as it benefits from access into one of the area's most prestigious and beautiful communal gardens.

This particular apartment has been extensively refurbished and is presented to a high standard throughout. The living accommodation is located on the raised ground floor and benefits from large windows providing excellent natural light.

On the first floor there is a fantastic secluded and quiet study area with access to a private terrace. The perfect 'working from home' set up. The lower ground floor is occupied by a spacious dining area, kitchen, utility room, two double bedrooms, principal en suite bathroom, an additional family bathroom plus further courtyard patio.

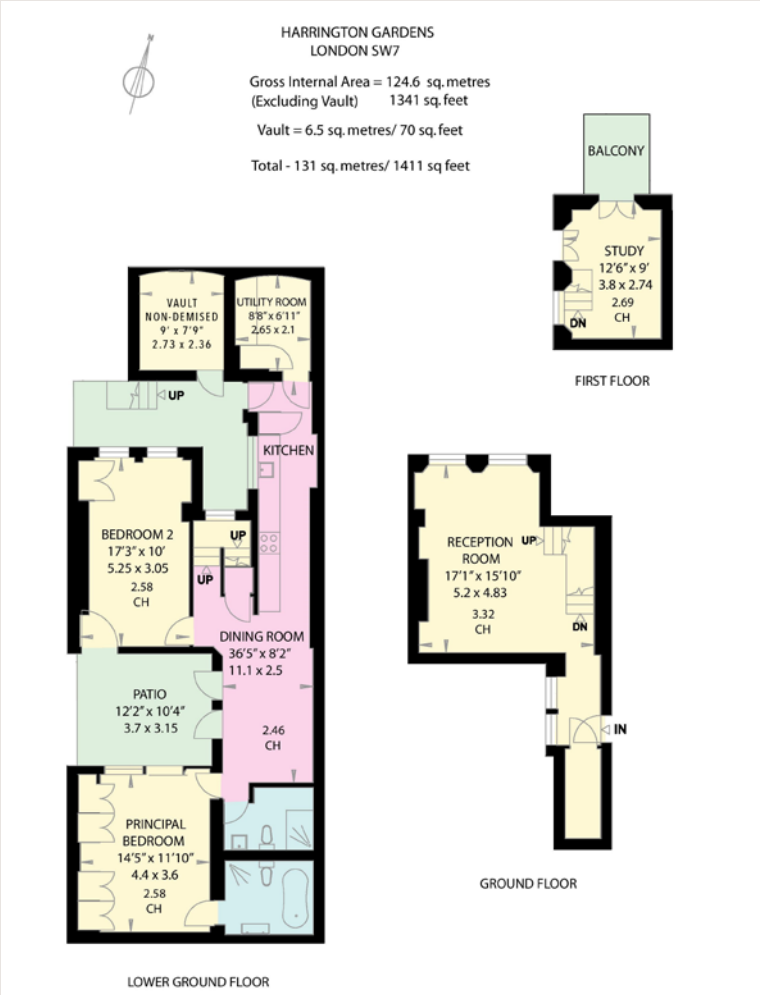






Terms

Tenure: Share of Freehold 949 years remaining (approx)
Local Authority: The Royal Borough of Kensington and Chelsea
Service Charge: £3,400 pa (approx)
Ground Rent: £100 pa (approx)
Guide Price: £1,750,000
Council Tax: Band G
Broadband: Yes
Parking: Residents parking permit - Royal Borough of Chelsea and kensington



South Kensington

90 Old Brompton Road, London, SW7 3LQ
020 7581 7000

southken@struttandparker.com

IMPORTANT NOTICE: Strutt & Parker gives notice that: 1. These particulars do not constitute an offer or contract or part thereof. 2. All descriptions, photographs and plans are for guidance only and should not be relied upon as statements or representations of fact. All measurements are approximate and not necessarily to scale. Any prospective purchaser must satisfy themselves of the correctness of the information within the particulars by inspection or otherwise. 3. Strutt & Parker does not have any authority to give any representations or warranties whatsoever in relation to this property (including but not limited to planning/building regulations), nor can it enter into any contract on behalf of the Vendor. 4. Strutt & Parker does not accept responsibility for any expenses incurred by prospective purchasers in inspecting properties which have been sold, let or withdrawn. 5. We are able to refer you to SPF Private Clients Limited ("SPF") for mortgage broking services, and to Alexander James Interiors ("AJI"), an interior design service. Should you decide to use the services of SPF, we will receive a referral fee from them of 25% of the aggregate of the fee paid to them by you for the arrangement of a mortgage and any fee received by them from the product provider. Should you decide to use the services of AJI, we will receive a referral fee of 10% of the net income received by AJI for the services they provide to you. 6. If there is anything of particular importance to you, please contact this office and Strutt & Parker will try to have the information checked for you. Photographs taken February 2023. Strutt & Parker is a trading style of BNP Paribas Real Estate Advisory & Property Management UK Limited.