

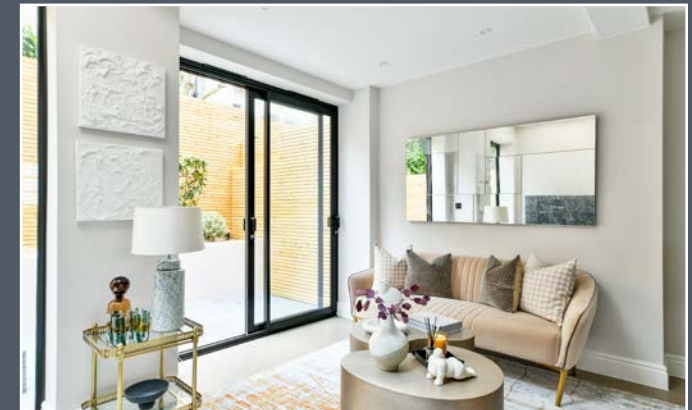


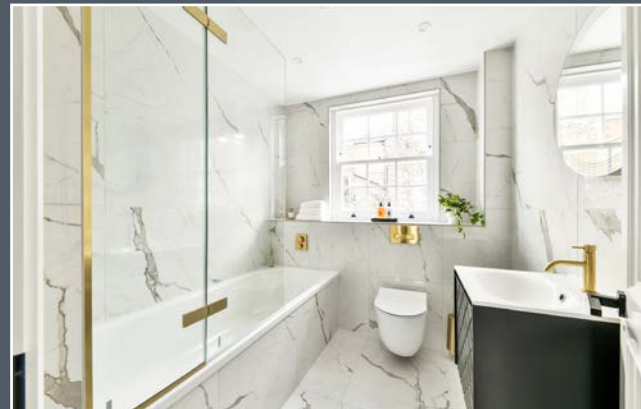
HASKER STREET

LONDON SW3



A NEWLY REFURBISHED THREE
BEDROOM PERIOD HOUSE, WITH
BRIGHT WELL-PLANNED LIVING
ACCOMMODATION, SITUATED ON
THE MID-TERRACE OF A POPULAR
AND QUIET ONE-WAY STREET.





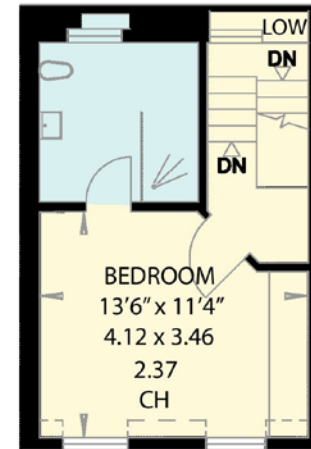
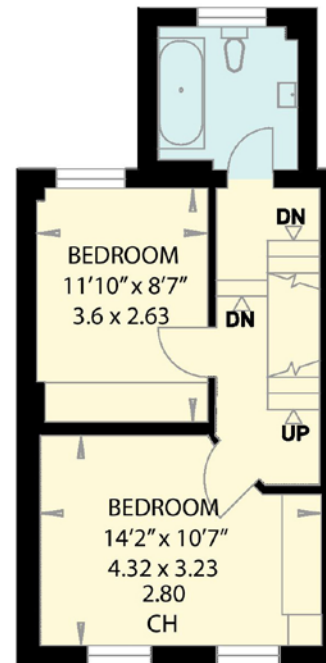
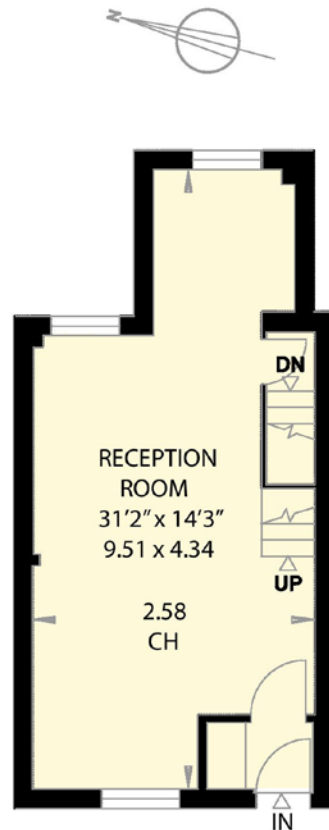
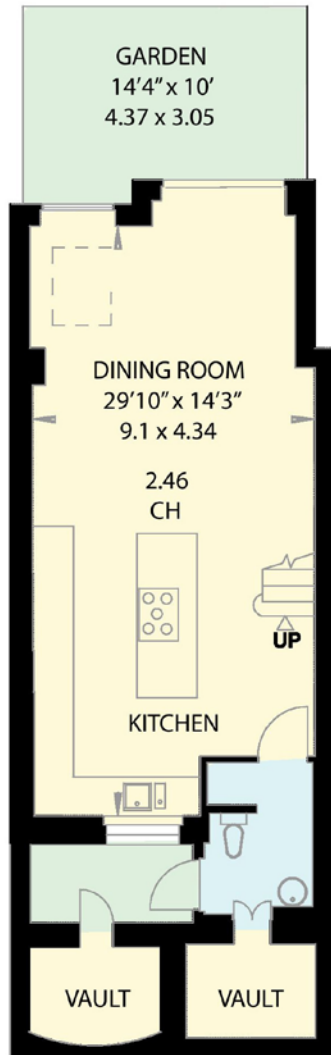
HASKER STREET IS A HIGHLY SOUGHT-AFTER
CHELSEA/KNIGHTSBRIDGE LOCATION,
RUNNING SOUTH FROM WALTON STREET,
SITUATED ROUGHLY EQUIDISTANT BETWEEN
SOUTH KENSINGTON, KNIGHTSBRIDGE
AND SLOANE SQUARE.

GROSS INTERNAL AREA

146.8 sq m (1,581 sq ft) (Including External Vault)

External Vault = 3 sq metres / 32 sq feet

Illustration For Identification Only. Not to Scale.



TENURE Freehold
LOCAL AUTHORITY The Royal Borough
of Kensington and Chelsea
EPC RATING D
COUNCIL TAX H
ASKING PRICE £4,000,000

**STRUTT
& PARKER**

BNP PARIBAS GROUP

SLOANE STREET
66 Sloane Street,
London SW1X 9SH
+44 (0)20 7235 9959
struttandparker.com

[f /struttandparker](#)

[@struttandparker](#)

[struttandparker.com](#)

Over 45 offices across England
and Scotland, including prime
Central London

IMPORTANT NOTICE Strutt & Parker and Savills give notice that: 1. These particulars do not constitute an offer or contract or part thereof. 2. All descriptions, photographs and plans are for guidance only and should not be relied upon as statements or representations of fact. All measurements are approximate and not necessarily to scale. Any prospective purchaser must satisfy themselves of the correctness of the information within the particulars by inspection or otherwise. 3. Strutt & Parker and Savills do not have any authority to give any representations or warranties whatsoever in relation to this property (including but not limited to planning/building regulations), nor can it enter into any contract on behalf of the Vendor. 4. Strutt & Parker and Savills do not accept responsibility for any expenses incurred by prospective purchasers in inspecting properties which have been sold, let or withdrawn. 5. We are able to refer you to SPF Private Clients Limited ("SPF") for mortgage broking services, and to Alexander James Interiors ("AJI"), an interior design service. Should you decide to use the services of SPF, we will receive a referral fee from them of 25% of the aggregate of the fee paid to them by you for the arrangement of a mortgage and any fee received by them from the product provider. Should you decide to use the services of AJI, we will receive a referral fee of 10% of the net income received by AJI for the services they provide to you. 6. If there is anything of particular importance to you, please contact this office and Strutt & Parker will try to have the information checked for you. Photographs taken April 2023. Particulars prepared April 2023. Strutt & Parker is a trading style of BNP Paribas Real Estate Advisory & Property Management UK Limited

OnTheMarket.com