



Hemstal Road, London, NW6

For the finer things in property.

**STRUTT  
& PARKER**

BNP PARIBAS GROUP



## Hemstal Road, London,NW6

A spacious two-bedroom flat extending to approx. 823.sq ft.

Presented in excellent condition and situated within a sought-after road in the heart of West Hampstead, moments from West End Lane.

The accommodation is arranged over the first and second floors. On the first floor is the sitting room, which opens to the dining area and kitchen, whilst to the second floor there are two double bedrooms and family bathroom. The garden is accessible from the half landing and the spiral staircase leads to a pathway that opens onto the demised garden. Residents on street parking.CA Q

Sitting room | Dining area | Kitchen  
2 Bedrooms | Family bathroom | Rear garden  
Residents parking. CA Q | Period conversion  
Very good decoration | Leasehold

EPC Rating C



### Terms

**Tenure:** Leasehold 125-year lease from 18.9.1989

**Service Charge:** Approx £833.53 year ending March 2025

**Ground Rent:** £10 per annum

**Council Tax:** Band E

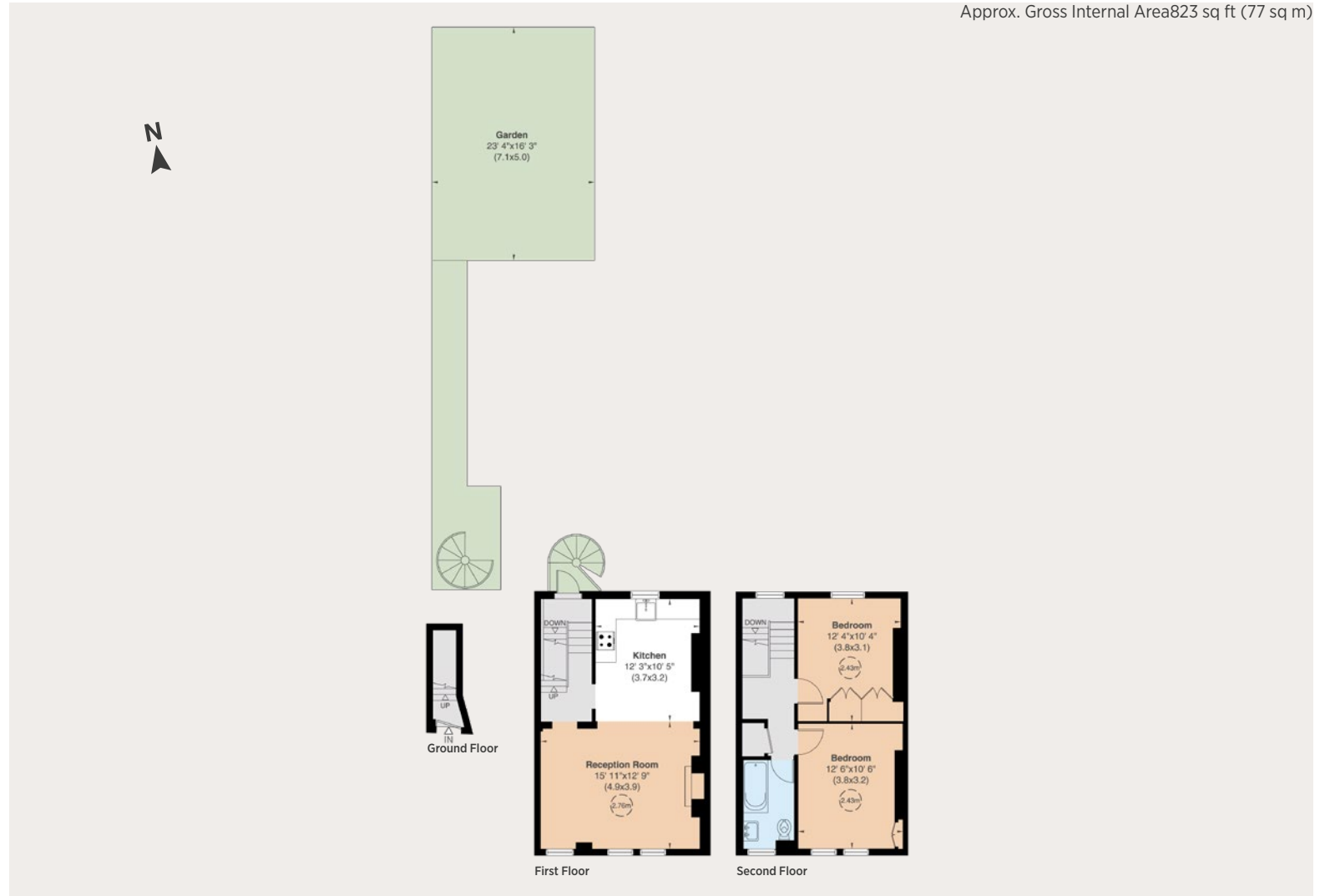
**Local Authority:** Camden

**Asking Price:** £725,000









Hampstead

020 7591 2225

sarah.james@struttandparker.com

#### IMPORTANT NOTICE

Strutt & Parker gives notice that: 1. These particulars do not constitute an offer or contract or part thereof. 2. All descriptions, photographs and plans are for guidance only and should not be relied upon as statements or representations of fact. All measurements are approximate and not necessarily to scale. Any prospective purchaser must satisfy themselves of the correctness of the information within the particulars by inspection or otherwise. 3. Strutt & Parker does not have any authority to give any representations or warranties whatsoever in relation to this property (including but not limited to planning/building regulations), nor can it enter into any contract on behalf of the Vendor. 4. Strutt & Parker does not accept responsibility for any expenses incurred by prospective purchasers in inspecting properties which have been sold, let or withdrawn. 5. We are able to refer you to SPF Private Clients Limited ("SPF") for mortgage broking services, and to Alexander James Interiors ("AJI"), an interior design service. Should you decide to use the services of SPF, we will receive a referral fee from them of 25% of the aggregate of the fee paid to them by you for the arrangement of a mortgage and any fee received by them from the product provider. Should you decide to use the services of AJI, we will receive a referral fee of 10% of the net income received by AJI for the services they provide to you. 6. If there is anything of particular importance to you, please contact this office and Strutt & Parker will try to have the information checked for you. Photographs taken November 2024. Particulars prepared November 2024. Strutt & Parker is a trading style of BNP Paribas Real Estate Advisory & Property Management UK Limited.



Over 50 offices across England and Scotland,  
including Prime Central London

For the finer things in property.

