

Hereford Road

NOTTING HILL W2



An outstanding five bedroom family home with large private garden.

Laid over five floors, this stunning grade II listed home has been carefully refurbished throughout, offering excellent entertaining space on the ground and lower ground floors, with two pairs of French doors leading out to a large private garden from the kitchen/dining room.

On the upper floors, there is a stunning principal bedroom with ensuite bathroom, a further four bedrooms, two showers rooms, and a study. This beautifully designed house has very good storage space, stunning oak flooring and also benefits from having air conditioning in the bedrooms.







Hereford Road is set in the heart of Notting Hill in the Westbourne Conservation Area and this house is on the section running north from Westbourne Grove. It is therefore in close proximity to all the shopping, restaurant and transport facilities of the local area. The immediate area is home to some of the finest schools in prime central London and Pembridge Hall School, Chepstow House and Wetherby School are all within easy striking distance. The London underground station at Notting Hill Gate (Central, Circle and District lines) and the green spaces of Kensington Gardens and Hyde Park are also nearby.

Terms

Guide price: £7,250,000

Tenure: Freehold

EPC rating: C

Local authority: City of Westminster parking permit

Council tax: Band H

Parking: Westminster

Mobile coverage and broadband Information can be found here: <https://checker.ofcom.org.uk/en-gb/mobile-coverage>





Gross Internal Area approx.

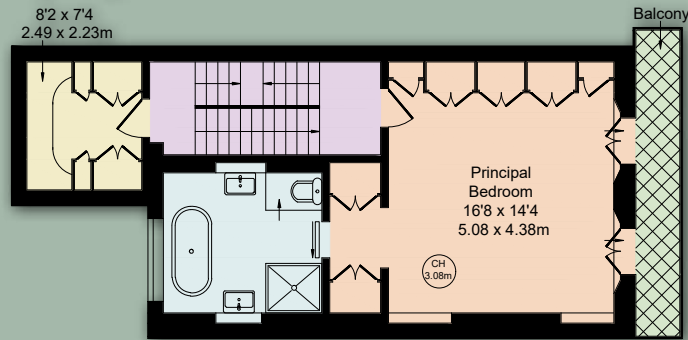
2,999 Sq Ft - 279 Sq M

(INCLUDING STORES)

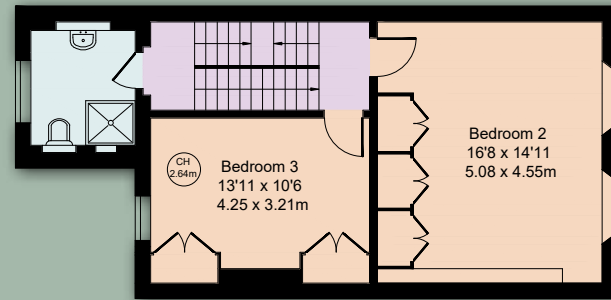
STORES 102 Sq Ft - 10 Sq M

Key :

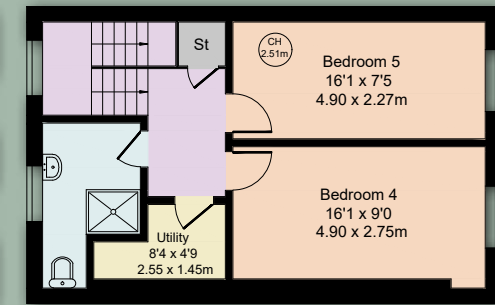
CH - Ceiling Height



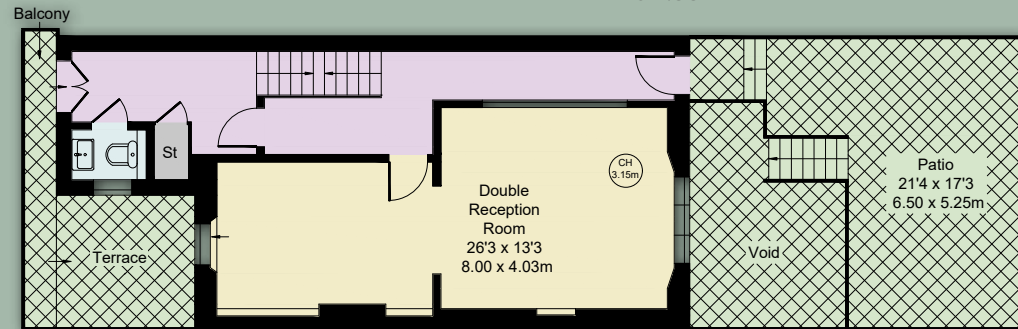
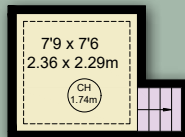
First Floor



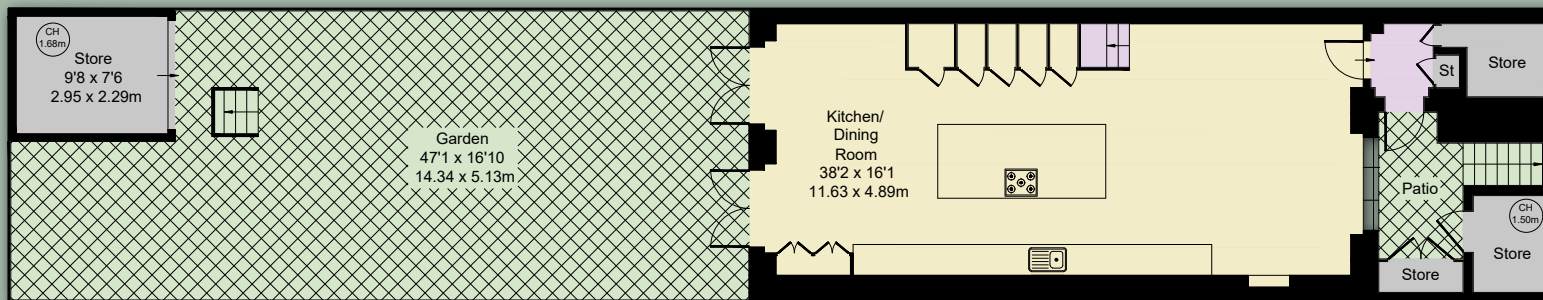
Second Floor



Third Floor



Raised Ground Floor



Lower Ground Floor



IMPORTANT NOTICE: Strutt & Parker gives notice that: 1. These particulars do not constitute an offer or contract or part thereof. 2. All descriptions, photographs and plans are for guidance only and should not be relied upon as statements or representations of fact. All measurements are approximate and not necessarily to scale. Any prospective purchaser must satisfy themselves of the correctness of the information within the particulars by inspection or otherwise. 3. Strutt & Parker does not have any authority to give any representations or warranties whatsoever in relation to this property (including but not limited to planning/building regulations), nor can it enter into any contract on behalf of the Vendor. 4. Strutt & Parker does not accept responsibility for any expenses incurred by prospective purchasers in inspecting properties which have been sold, let or withdrawn. 5. We are able to refer you to SPF Private Clients Limited ("SPF") for mortgage broking services, and to Alexander James Interiors ("AJI"), an interior design service. Should you decide to use the services of SPF, we will receive a referral fee from them of 25% of the aggregate of the fee paid to them by you for the arrangement of a mortgage and any fee received by them from the product provider. Should you decide to use the services of AJI, we will receive a referral fee of 10% of the net income received by AJI for the services they provide to you. 6. If there is anything of particular importance to you, please contact this office and Strutt & Parker will try to have the information checked for you. Photographs taken June 2026. Particulars prepared June 2026. Strutt & Parker is a trading style of BNP Paribas Real Estate Advisory & Property Management UK Limited

Strutt & Parker Notting Hill

303 Westbourne Grove, London, W11 2QA

020 7221 1111 | nottinghill@struttandparker.com

Strutt
& Parker